

FOR SUGGESTED DETAIL PAINTING SCHEME - SEE ILLUSTRATIONS. Paint parts as indicated and allow to dry before assembling.

NOTE!

PLEASE TEST FIT PARTS BEFORE GLUING TO ENSURE PROPER FIT.

Step 1: Assembling the head

Attach the mouth piece #12 to the upper jaw #1, and insert the upper teeth parts #47,#48, and lastly #23. Attach the mouth piece #11 to the lower jaw #2, and insert the lower teeth parts #36, #37 and lastly #24. Attach tongue #27 to the lower jaw. Use the completed Jaws to attach the mouth corner #29,#30 by sandwiching them in between. Finally, Attach #20,#22 to the neck.

* Before glueing, be sure to do a test fit and confirm the position of the parts. The head is now complete.

FIG.1

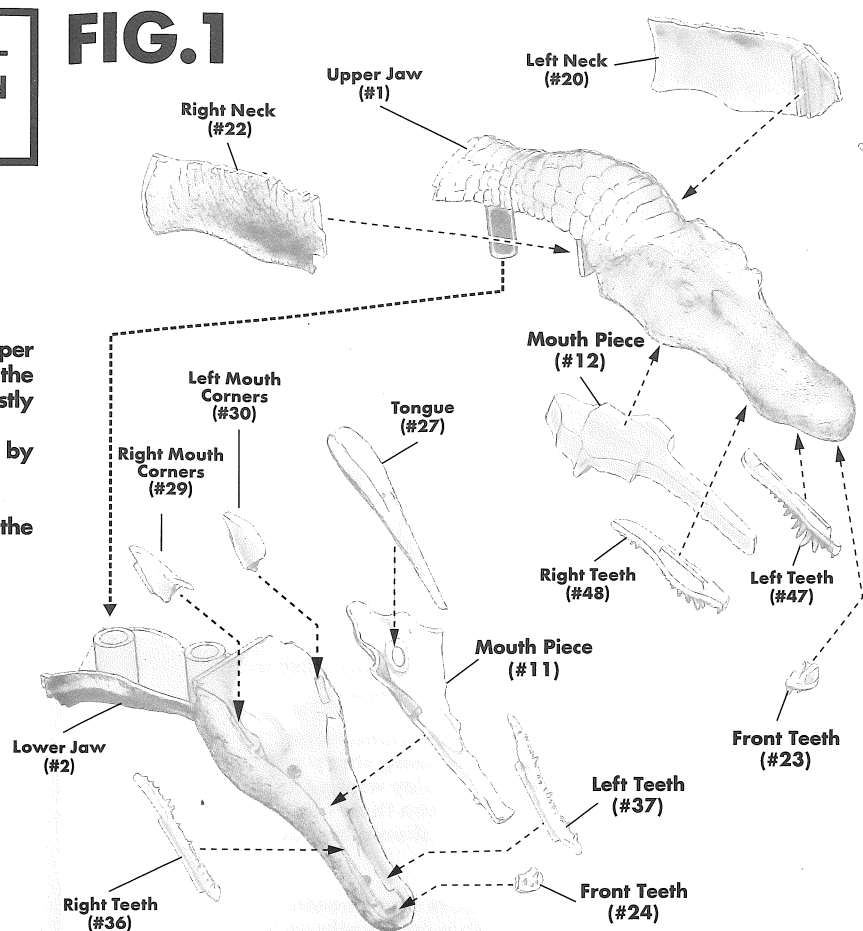
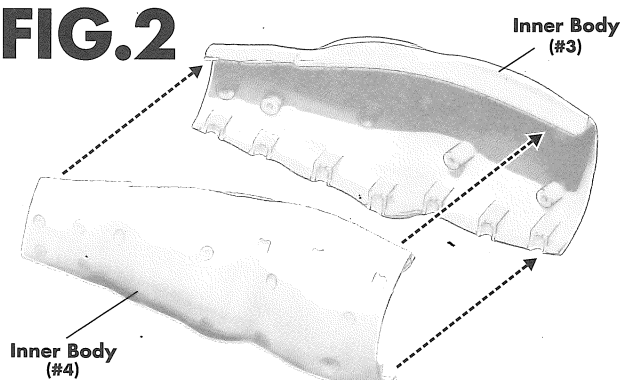


FIG.2



Step 2: Assembling the body

Attach the inner body parts #3,#4. Then, attach the base of the tail #8,#9,#14 and belly #10. Then, attach the #5,#6,#7 to the inner body parts. Attach the fin #32 to the assembled inner body. The body is now complete.

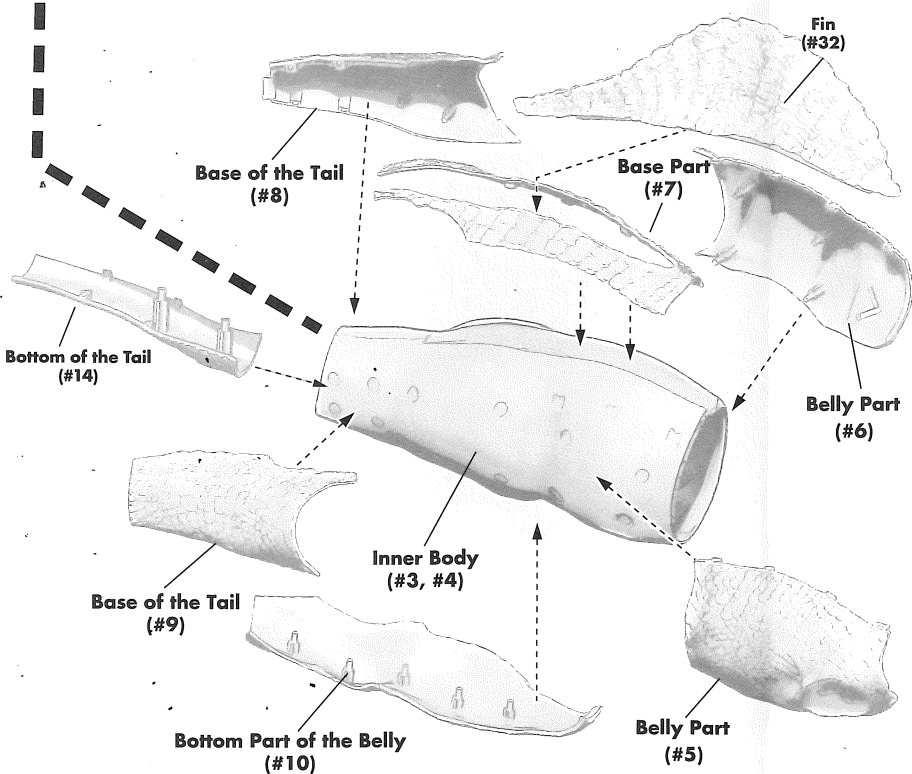
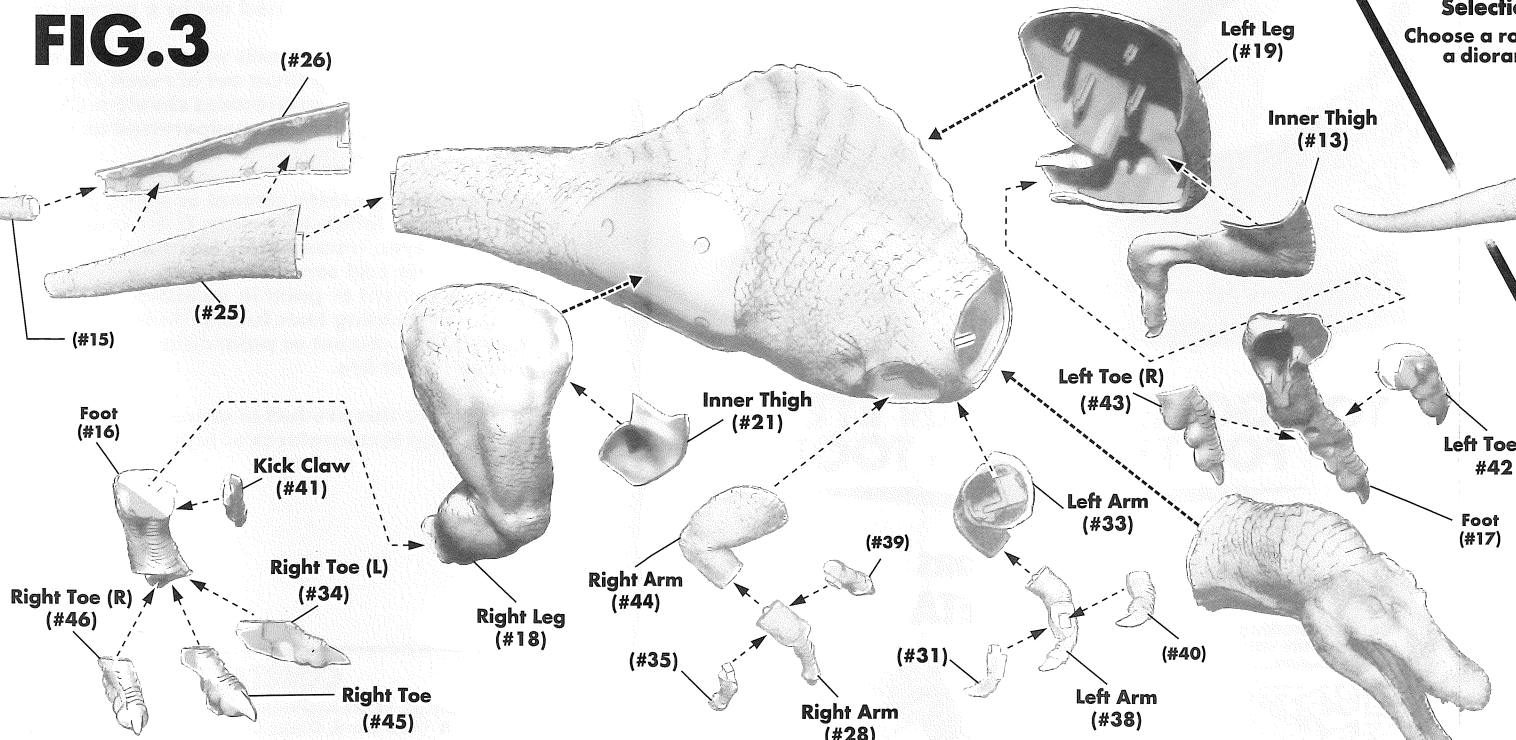


FIG.3



Step3: Assembling the arms

Attach #39, #35 to #28, then attach to the right hand to right arm #44. Attach #31, 40 to #38, then attach the left hand to left arm #33. The left and right arms are now complete.

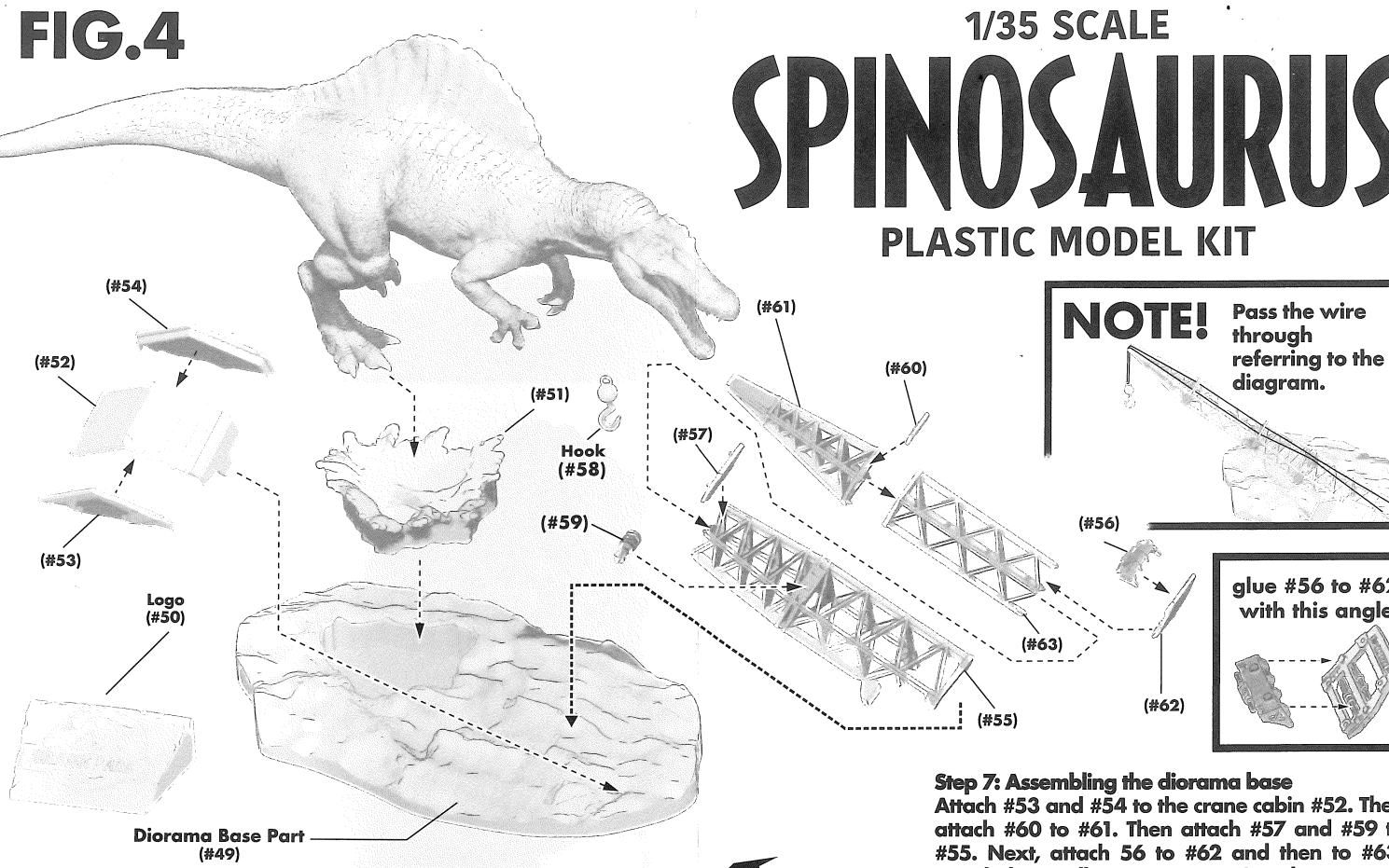
Step4: Assembling the legs

Attach the inner thigh #21 to the right leg #18. Then attach the left and right toes #34, #46 to the foot #45, and attach the kick claw #41. Attach the inner thigh #13 to the left leg #19. and attach the left and right toes #42, #43 to the foot #17. The left and right legs are now complete.

Step5: assembling the tail

Attach #26 to the tail #25, then attach #15. The tail is now complete.

FIG.4



Step 7: Assembling the diorama base

Attach #53 and #54 to the crane cabin #52. Then attach #60 to #61. Then attach #57 and #59 to #55. Next, attach 56 to #62 and then to #63. Attach the smaller parts #61, #63 and #55. Then pass the wire through the hook #58.

You can place logo #50 where you like.

Your model is now complete! Let's paint it next!

Selection formula
Choose a round pedestal or a diorama pedestal.

NOTE!

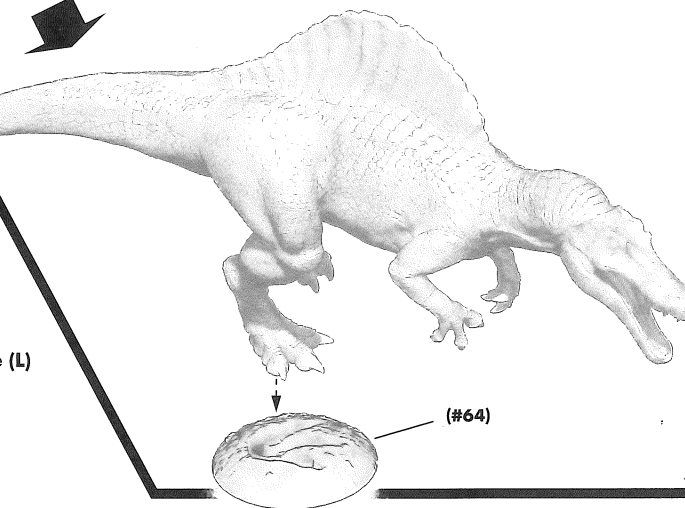
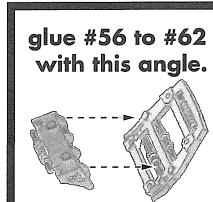
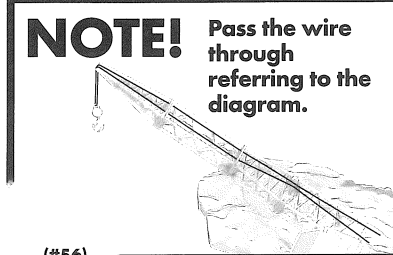
Please attach the legs later.

Step6: Assembling Spinosaurus

Attach the head, arms, legs, and tail parts to the body assembled in Step 2.

The Spinosaurus body is now complete! Use either the circular base #64 or the diorama base to display it standing.

1/35 SCALE
SPINOSAURUS
PLASTIC MODEL KIT



1/35 Scale
SPINOSAURUS
 PLASTIC MODEL KIT



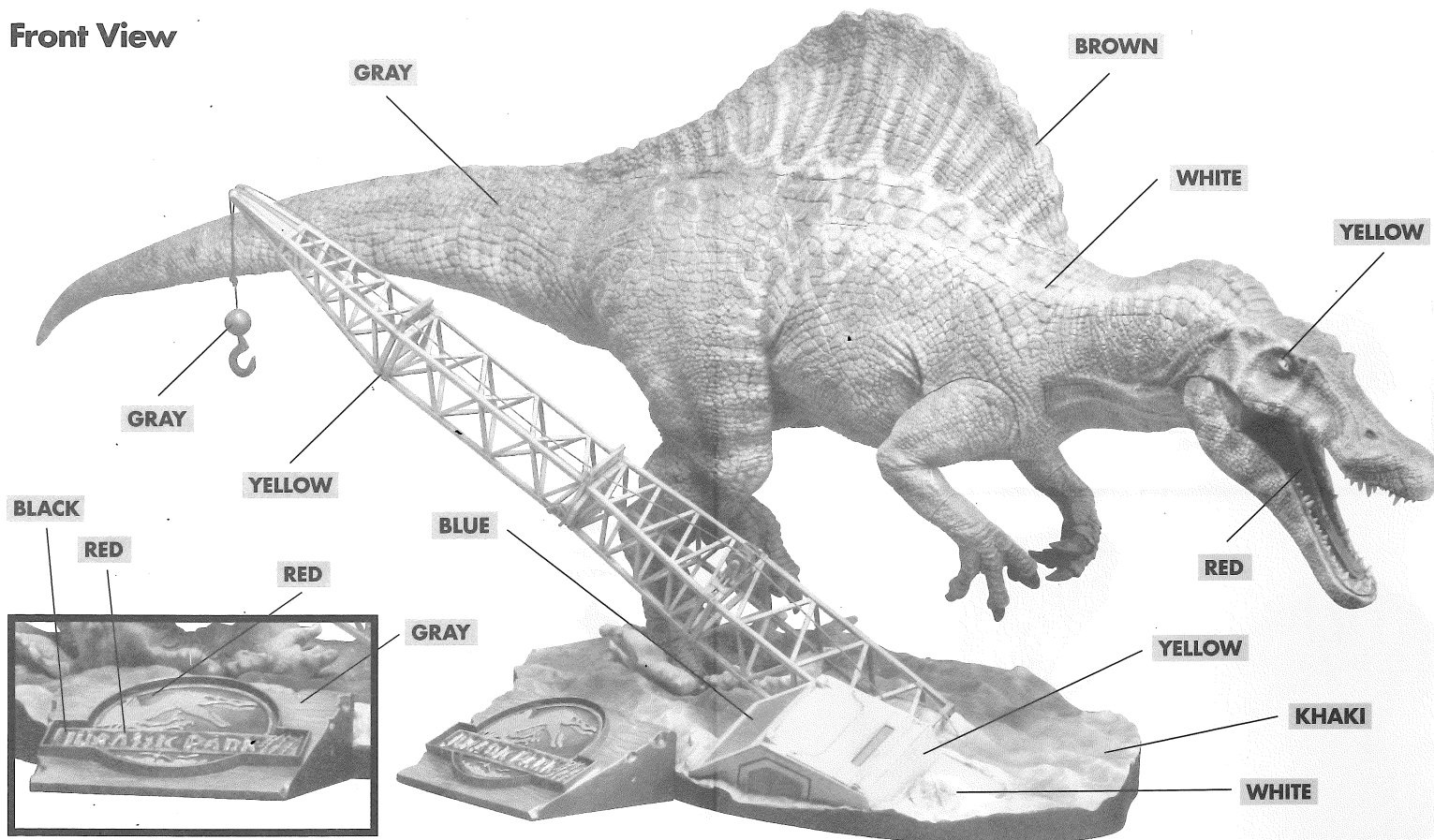
Checkout the back side for instructions

1/35 SCALE
SPINOSAURUS
 PLASTIC MODEL KIT



KIT NO.
 411-200099TP

Front View



IMPORTANT - READ THIS FIRST!

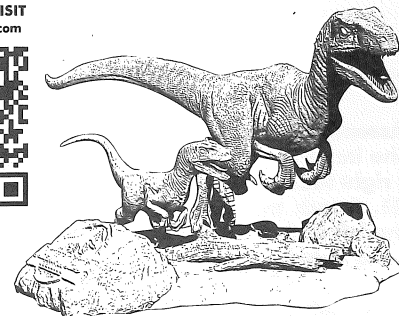
- This model needs to be assembled. Please read the instructions carefully before assembling the model.
- After taking the product out of the plastic bag, please tear the plastic bag and dispose of it somewhere safe as there is a danger of suffocation if young children mishandle it.
- Cleanly clip the parts from the trees and discard the trees after all parts have been removed.
- Due to the way this product is manufactured, there will always be a possibility of there being sharp points that may cause harm. Be sure not to play with or mishandle the trees or use them for anything than their intended use. Households with young children should be particularly careful.
- Use nippers for removing parts and smooth over any burrs remaining on parts with a craft knife or file. Be careful when using nippers, craft knives or files as you may cut your hands or fingers. Children under 10 years old should have the work carried out by a parent or guardian.
- This kit contains small parts which can be a choking hazard so please keep them out of reach of younger children. Under no circumstances should a child younger than the target age be left unsupervised as there is a risk of swallowing these parts.
- If you are using plastic cement or paint, pay extra attention to the following points: If the cement or paint gets in your eyes, immediately wash the affected area with plenty of water and consult a doctor. Do not use cement or paint in an enclosed area as there is a danger of inhaling toxic fumes. Under no circumstances should you use cement or paint near an open flame as there is a risk of fire.



YOU GOTTA KEEP AN EYE OUT FOR THESE KITS TOO!

VELOCIRAPTORS BLUE & BETA

FOR MORE TUTORIALS AND FUN STUFF VISIT www.xplusmodelkit.com



SURVEY!



CONTACT US

ADDRESS: 9F, Hiranomachi Takahashi Bldg., Hiranomachi 1-8-8, Chuo Ward, Osaka City, Osaka, Japan 541-0046

EMAIL: info@ric-toy.com

*We are available on non-holiday weekdays from 10:00 to 18:00 (JST)

This is a Spinosaurus with distinct white bodyline. By using color pencils will be easier to mark those white body lines also respecting texture surface. Using water-soluble colored pencils then gently trace the patterns drawn with water, the lines will naturally blur and become more realistic. Or doing same for oil-soluble.

ALSO

