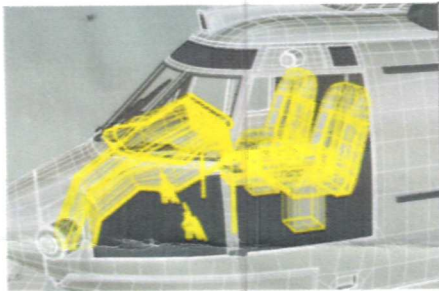
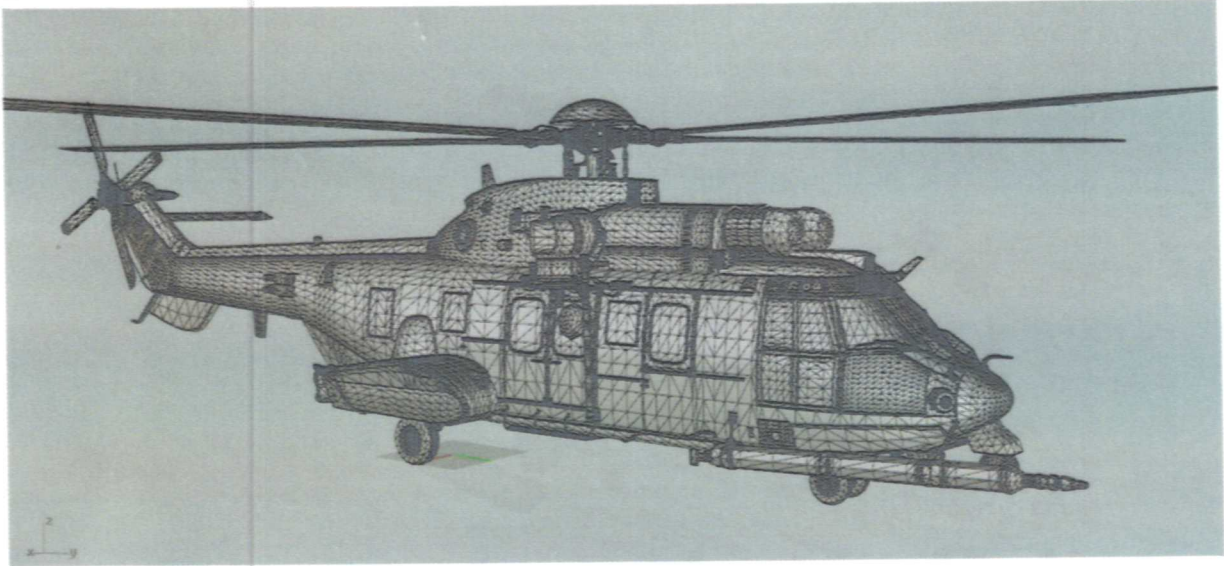


EUROCOPTER EC-725 CARACAL



1 :

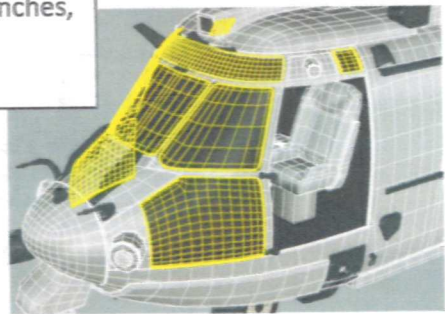
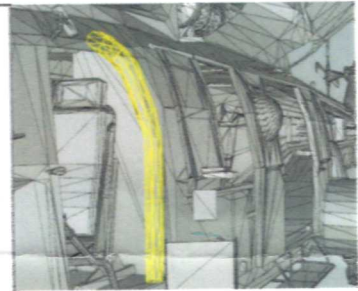


Montage cockpit

Vitre à placer par l'intérieur ou avec une découpe plus ardue par l'extérieur.

Placer le tableau haut.

Deux choix palonniers, manches, sièges et collectifs.



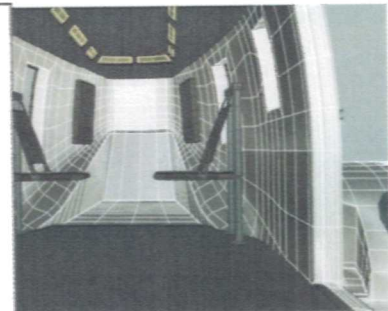
2 :

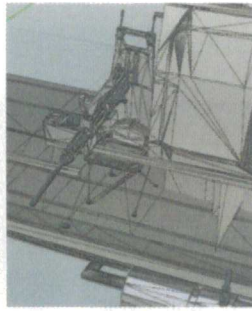
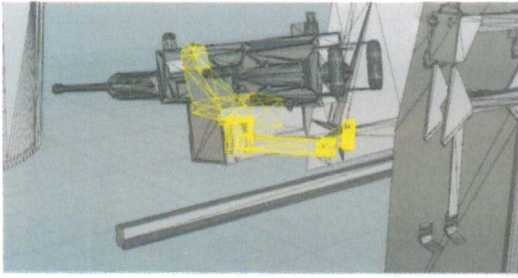


Placer l'aménagement intérieur en fonction de votre documentation ! Deux types de sièges (dotation et export).

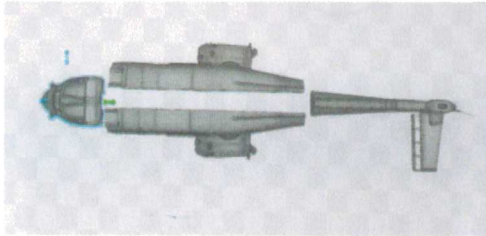
Voir point 12

Deux types de canons.

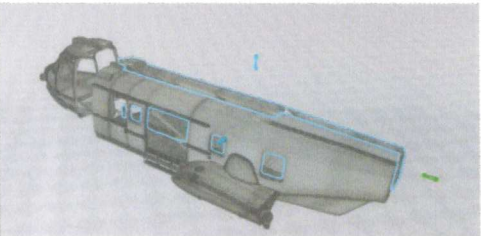




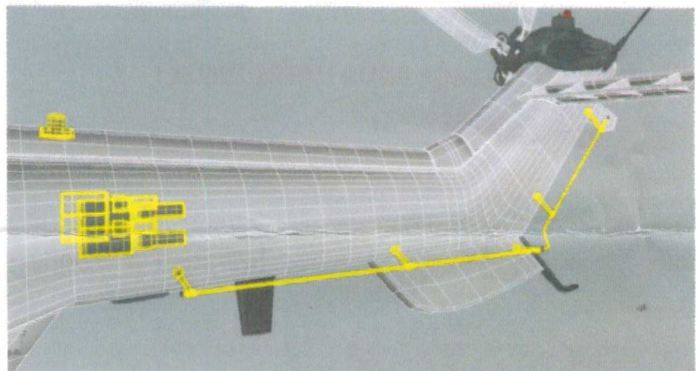
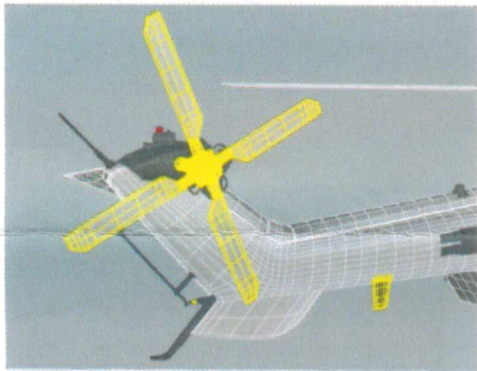
3 :



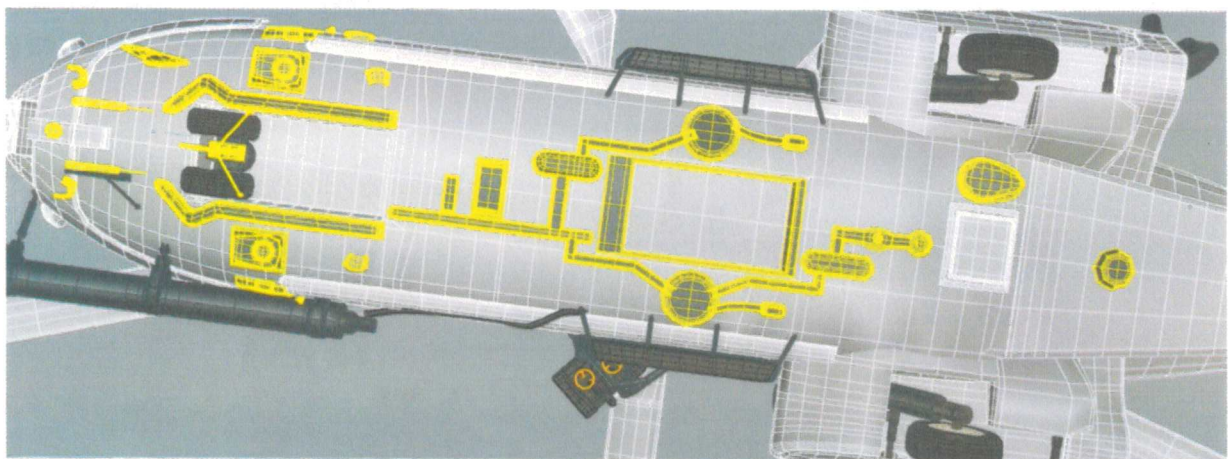
Après votre
aménagement
fermeture du
fuselage.



4 :



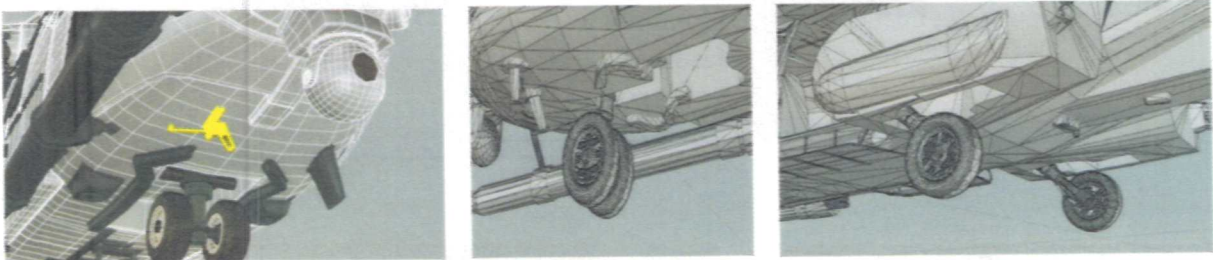
5 :



6:

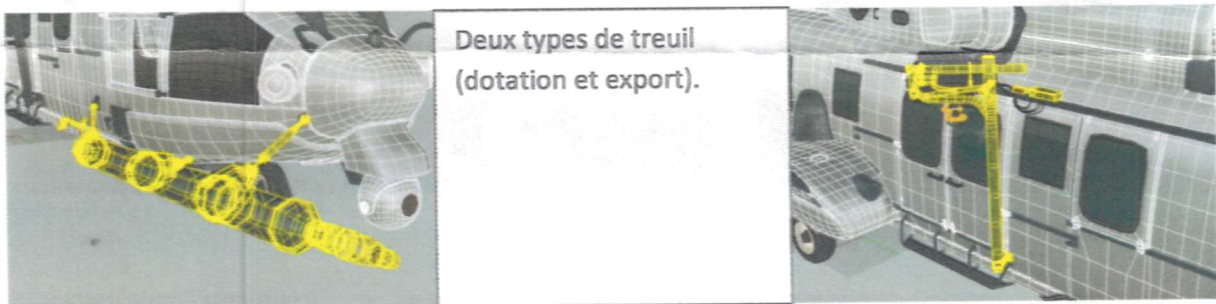


7:



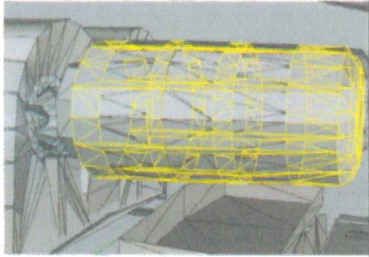
ATTENTION AU COLLAGE POUR L'ATERISSEUR !

8:

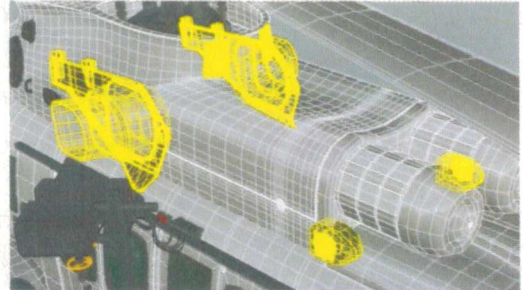
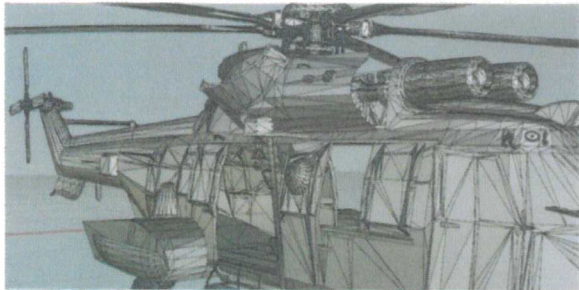
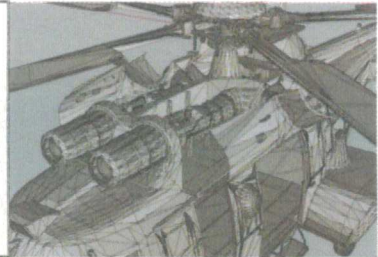


9:

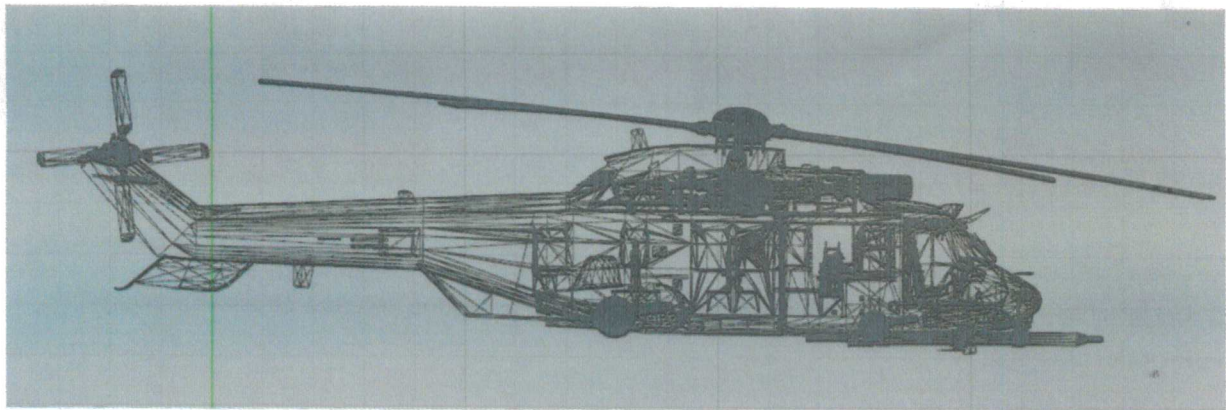
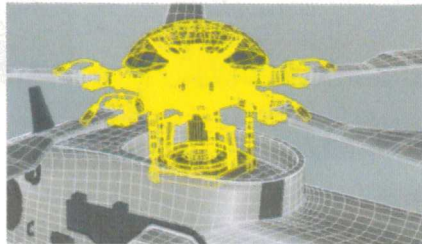




Plusieurs choix :
Turbines visibles, filtres turbines
avec grille en métal ou simple.



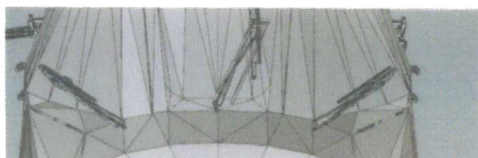
10 :



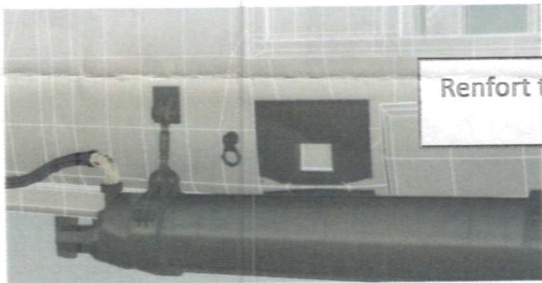
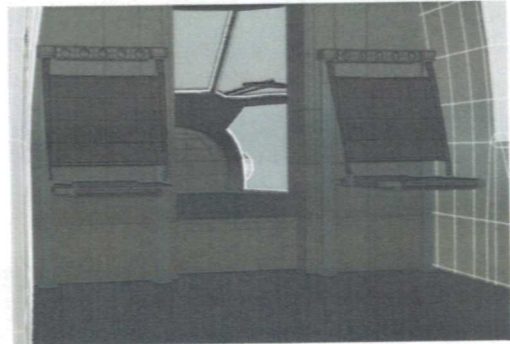
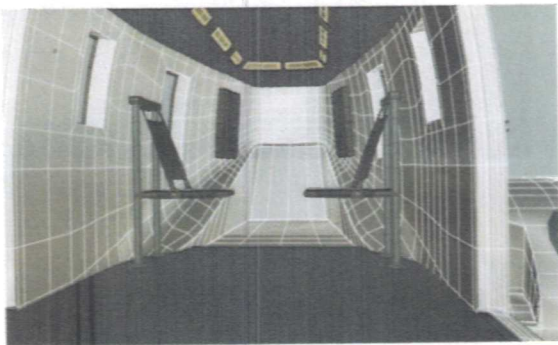
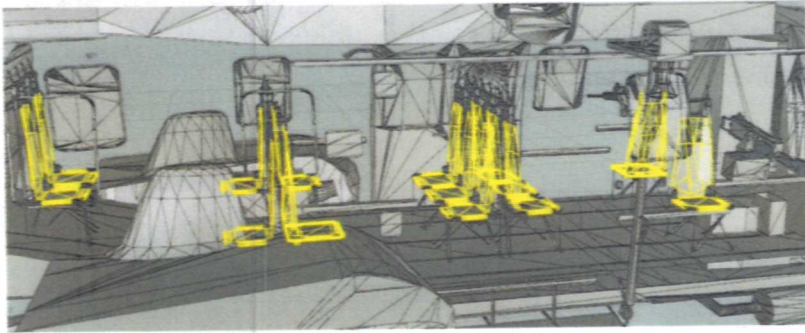
11 :



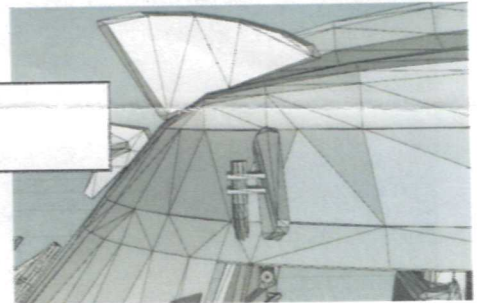
Deux types d'essuies glaces.



12 :



Renfort trappe et anneau.



Merci pour votre achat, ceci est mon premier kit de cette envergure, j'espère vous avoir occupé un après-midi pluvieux.

Bon montage.