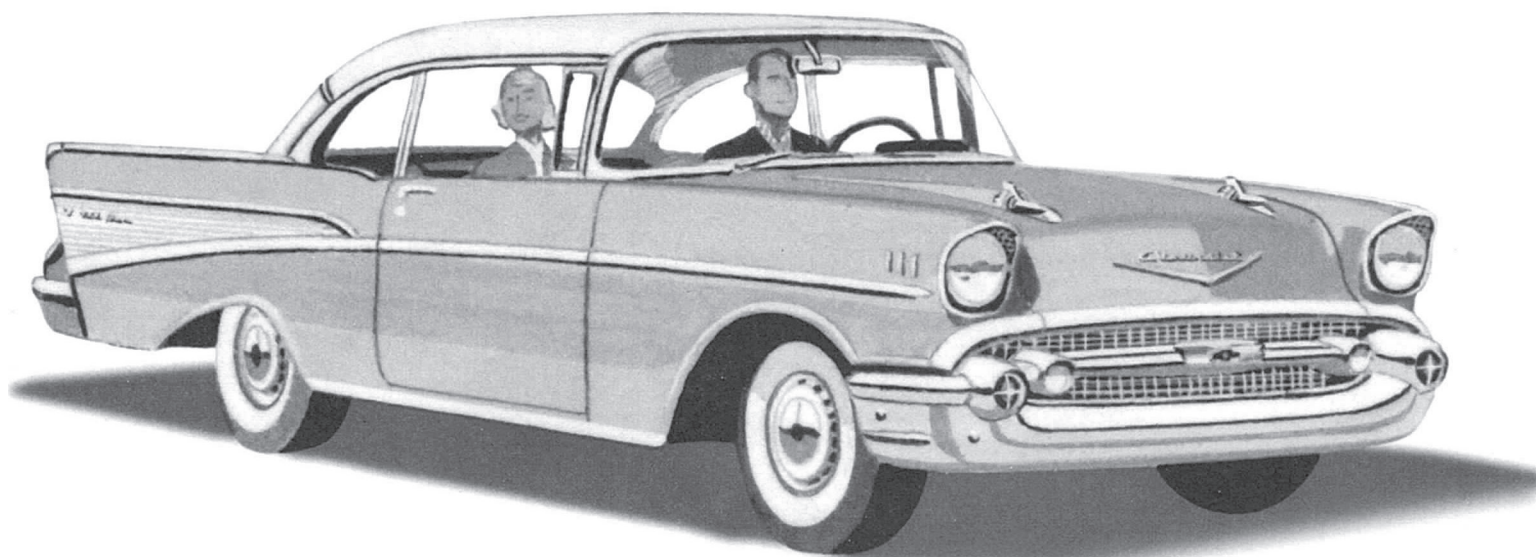




A741-200



BEFORE YOU BEGIN

Assembly: Carefully study and understand the entire instruction sheet. Compare the parts in the box to the instruction sheet to be sure you have received all the parts required. Carefully remove parts from trees. Before cementing, "TEST FIT" parts together to insure proper location and alignment. Scrape paint and plating from surfaces to be cemented. Subassemblies and components should be painted before any parts are attached. Use only cement and paint made for styrene plastic.

Painting: Wash parts thoroughly with mild soap and water. Parting lines, glue joints, and sharp edges should be sanded or filled with filler putty designed for plastic. Apply a "primer" coat and allow to dry. Check parts for imperfections and

repeat the procedure if necessary. Remove any lint or dust. Apply paint evenly, in several thin coats rather than one heavy coat. Allow each coat to thoroughly dry before the next is applied. Each coat should be carefully "wet sanded" using slightly damp No. 1200 sandpaper. Be careful not to remove any detail white sanding. Lightest colors should be painted first. Use frosted tape to mask off areas not to be painted. Remove tape after paint is dry to the touch. Use a very fine brush to touch up edges.

Decals: See back of instruction sheet for proper application. Decals should to be added after applying a gloss coat. Apply a final clear coat after decals are dry.

Round 2, LLC
4073 Meghan Beeler Court
South Bend, IN 46628

International Hobbycraft (UK) Ltd.
21 St. Thomas Street
Bristol BS1 6JS England



GENERAL MOTORS Trademarks used under license to Round 2, LLC. AMT and ROUND 2 and design are trademarks of Round 2, LLC. ©2011 Round 2, LLC, South Bend, IN 46628 USA. Product and packaging designed in the USA. Made in China. All rights reserved.

SYMBOL KEY

<p>A Chevrolet® Engine Red</p> <p>B Aluminum</p> <p>C Gloss Black</p> <p>D Semi-Gloss Black</p> <p>E Flat Black</p> <p>F Steel</p> <p>G Chrome Silver</p> <p>H Blue</p>	<p>J Rust</p> <p>K Dark Gray</p> <p>L Flat White</p> <p>M Gold</p> <p>N Flat Red</p> <p>X Exterior Color</p> <p>Y Interior Color</p> <p>Z Accent Color</p>	<p>1 Assembly sequence</p> <p>7 Part number</p> <p>C Paint this color</p> <p>2X Repeat several times</p> <p>21 Part will locate here</p> <p>6 Apply decal</p> <p>★ Begin assembly here</p> <p>13 Completed assembly</p>	<p>TYP Typical procedure</p> <p>P Plated part</p> <p>C Clear part</p> <p>◀ Optional</p> <p>! Important</p> <p>☞ Cement parts together</p> <p>↔ Both sides</p> <p>▬ Trim off shaded area</p>	<p>PE Optional Photo-etched part</p>
---	--	---	---	---

STOCK COLORS

SOLID EXTERIOR

X	Onyx Black
	Imperial Ivory
	Inca Silver
	Matador Red
	Colonial Cream
	Highland Green (Pale Green)
	Surf Green (Pale Gray Green)
	Tropical Turquoise
	Harbor Blue (Dark Blue)
	Larkspur Blue (Sky Blue)
	Adobe Beige
	Sierra Gold (Red Brown)

Y	A	B
	A	B
	A	B
	B	
	C	
	D	
	D	
	E	
	F	
	F	
	G	
	G	

TWO-TONE EXTERIOR

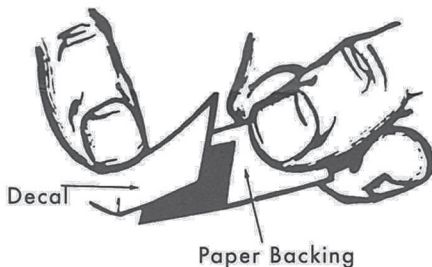
X	Overall Exterior/Accent	Z	
	Coronado Yellow (Light Yellow Brown)/India Ivory		A
	Canyon Coral (Medium Red Gray)/India Ivory		A
	Matador Red/India Ivory		B
	Colonial Cream/India Ivory		C
	Surf Green (Pale Gray Green)/India Ivory		D
	Tropical Turquoise/India Ivory		E
	Larkspur Blue (Sky Blue)/India Ivory		F
	Dusk Pearl (Light Red Gray)/Imperial Ivory		A
	Inca Silver/Imperial Ivory		A
	India Ivory/Onyx Black		A
	Colonial Cream/Onyx Black		C
	Laurel Green (Pale Brown Green)/Colonial Cream		A
	Highland Green (Pale Green)/Surf Green (Pale Gray Green)		D
	Harbor Blue (Dark Blue)/Larkspur Blue (Sky Blue)		F
	Sierra Gold (Red Brown)/Adobe Beige		G

Y	A	
	A	
	B	
	C	
	D	
	E	
	F	
	A	B
	A	B
	C	
	A	
	D	
	F	
	G	

TWO-TONE INTERIORS

X	Overall Interior/Accent	Z
	A Silver/Black	
	B Red/Black	
	C Yellow/Black	
	D Medium Green/Dark Green	
	E Medium Turquoise/Dark Turquoise	
	F Medium Blue/Dark Blue	
	G Beige/Copper	

DECAL APPLICATION INSTRUCTIONS



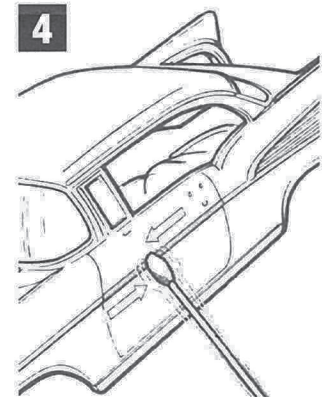
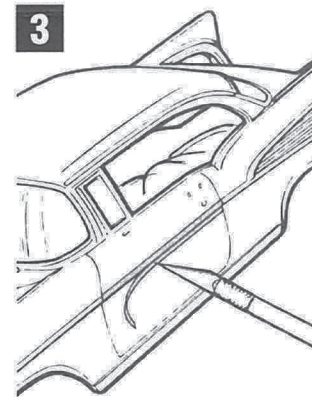
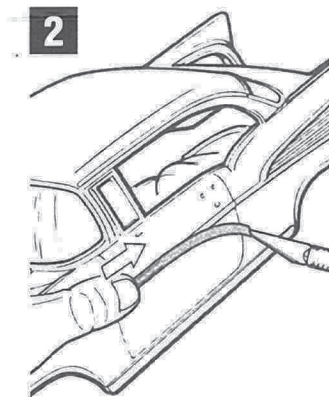
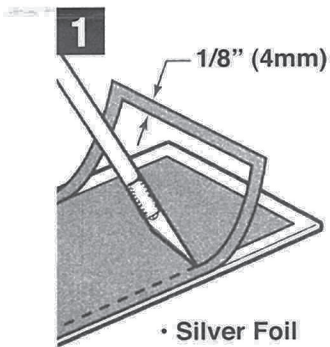
1. Cut decals apart close to image. Apply one at a time.
2. Dip decal into tepid water until paper backing loosens.
3. Moisten area of model where decal is to be applied, to aid in positioning.
4. Slide decal partly off of paper backing.
5. Place decal on model face up and slide paper backing away.
6. Thoroughly blot out excess water, air bubbles, and any excess emulsion with soft, lint-free cloth.
7. Allow time to dry before handling.

NOTE: If air bubbles or wrinkles form on an irregular or curved surface, cut decal and press into place.

SUPPLEMENTAL DETAILING INSTRUCTIONS

Working with Silver Foil: You may choose to apply the provided silver foil rather than Chrome Silver paint for those areas indicated. You will need a hobby knife with very fine edged #11 blades, cotton swabs and tooth picks. The procedure for foil application is as follows:

1 - Trim away 1/8th inch (4mm) of foil around the edges of the sheet and remove from backing and discard. Foil will not stick to slick or oily surfaces. When you have decided where you would like to apply foil, clean the area with mild soap and water on a soft lint-free cloth. Use your hobby knife to cut a piece of foil a little longer and wider than that area on your model kit. Allow the weight of the knife to cut through the foil only and not the backing sheet. Do not remove foil from the backing sheet until you are ready to apply it.



2 - Lay the foil in place starting at one end. Use your thumb or toothpick to carefully adapt it to the contours of the area.

3 - Use the weight of your hobby knife to trim around the areas and remove the excess. Several small pieces of foil may be overlapped to cover complex areas. Try to make joints in corners.

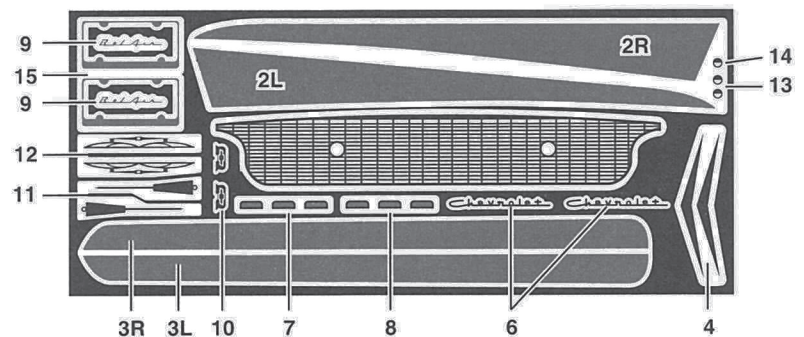
4 - Use the cotton swabs to burnish and polish the foil in place. This will also disguise overlaps in complex areas.

PE Working with Photo-Etched Details: Photo-etched details are made of very versatile nickel/silver alloy and can be prepared to project a variety of looks:

- Left in its natural state, you will get an aluminum sheen.
- Wiping it with metal oxidizer will give you a blackened look.
- 0000 steel wool or a polishing kit can achieve a chrome-like shine or, apply hobby paint in any color you like.

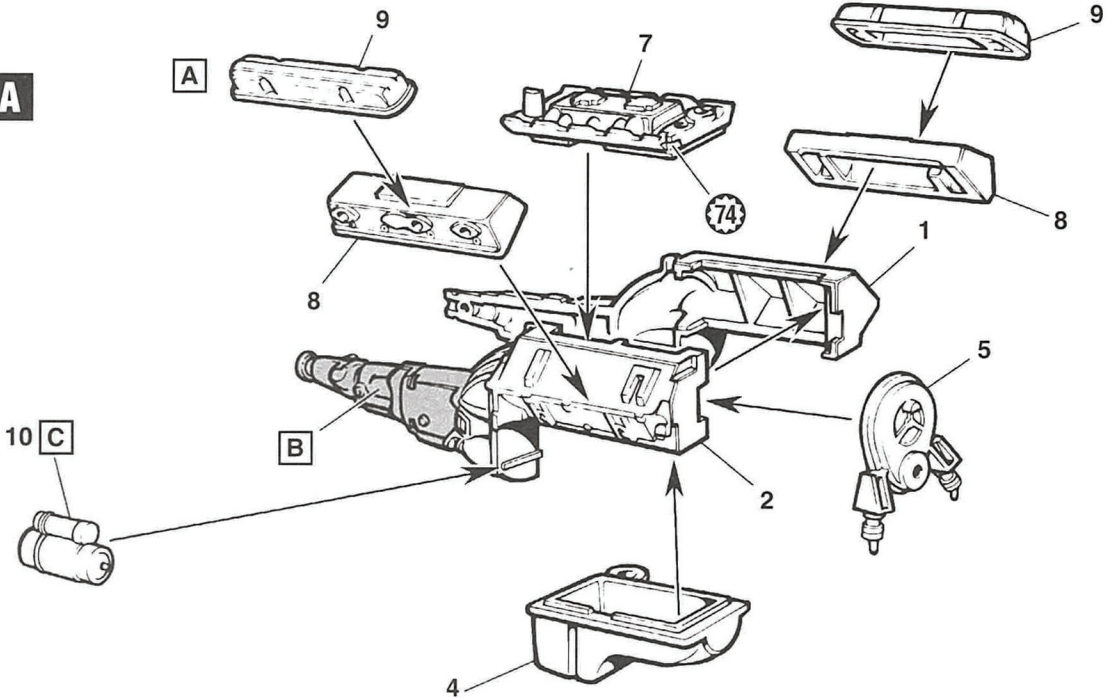
Removing pieces from the frame: When removing a chosen piece from its attached position, place a strip of low-tack note pad paper across the desired piece and frame around it. From the other side use a hobby knife or clippers to carefully cut through the small attaching tabs. Remove the low-tack strip from the frame with the part sticking to it. Nickel/silver is a soft alloy, so special care must be taken not to bend or distort the pieces or frame when separating them.

Attaching pieces to your model kit: Slow setting adhesives are recommended and will give you more opportunity to properly position the pieces in their desired locations. Use a 5-minute epoxy, clear enamel, or slow setting super glue. Apply small amounts of your cement with a toothpick or scrap of wire. Place your photo-etched piece in position with small tweezers, or tool of your choice, and hold in place until cement has set up. Trim away any unneeded area of the nickel/silver frame and apply it to a scrap piece of plastic to test the chosen cement and your application method.



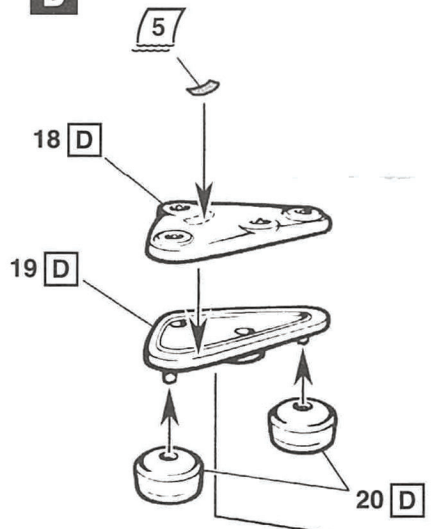
1

A

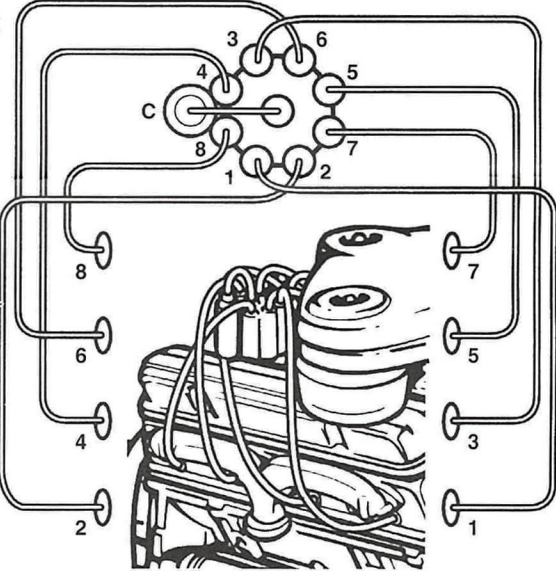
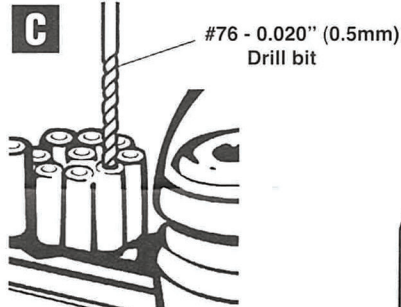


ADVANCED MODELERS

B

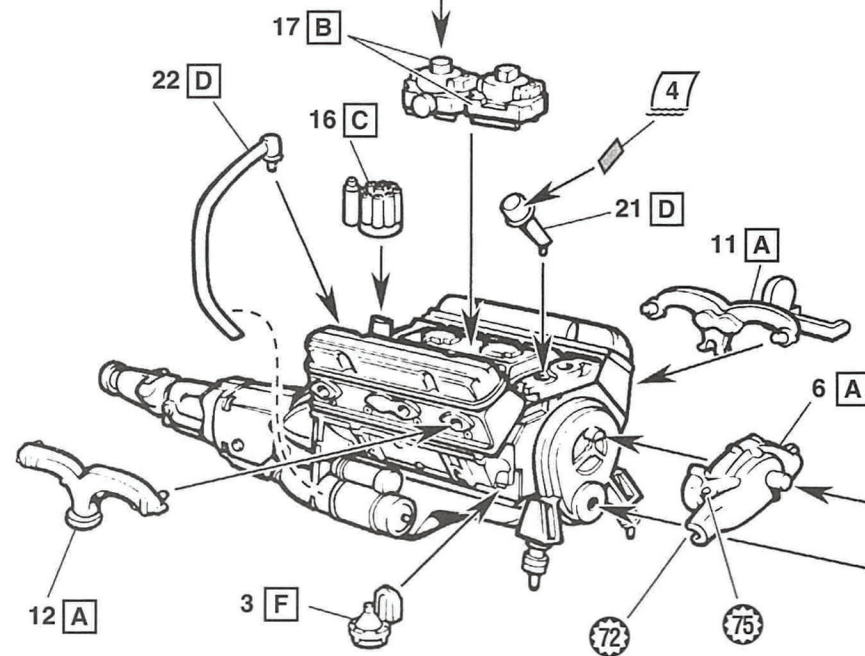


C

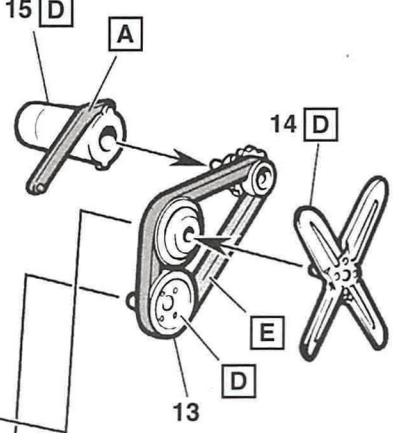


- Wire
- 1 = 1-1/2" (38mm)
- 2 = 1 1/2" (38mm)
- 3 = 1-3/8" (35mm)
- 4 = 1-3/8" (35mm)
- 5 = 1-1/4" (32mm)
- 6 = 1-1/4" (32mm)
- 7 = 1-1/8" (29mm)
- 8 = 1-1/8" (29mm)
- C = 5/16" (8mm)

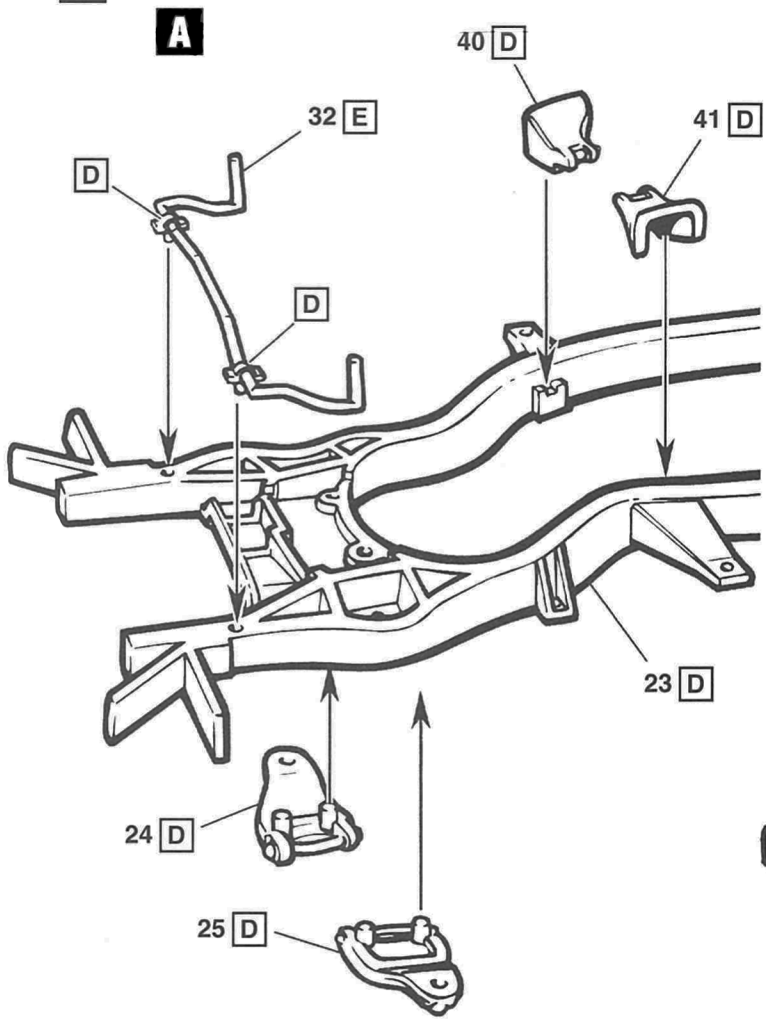
17 B



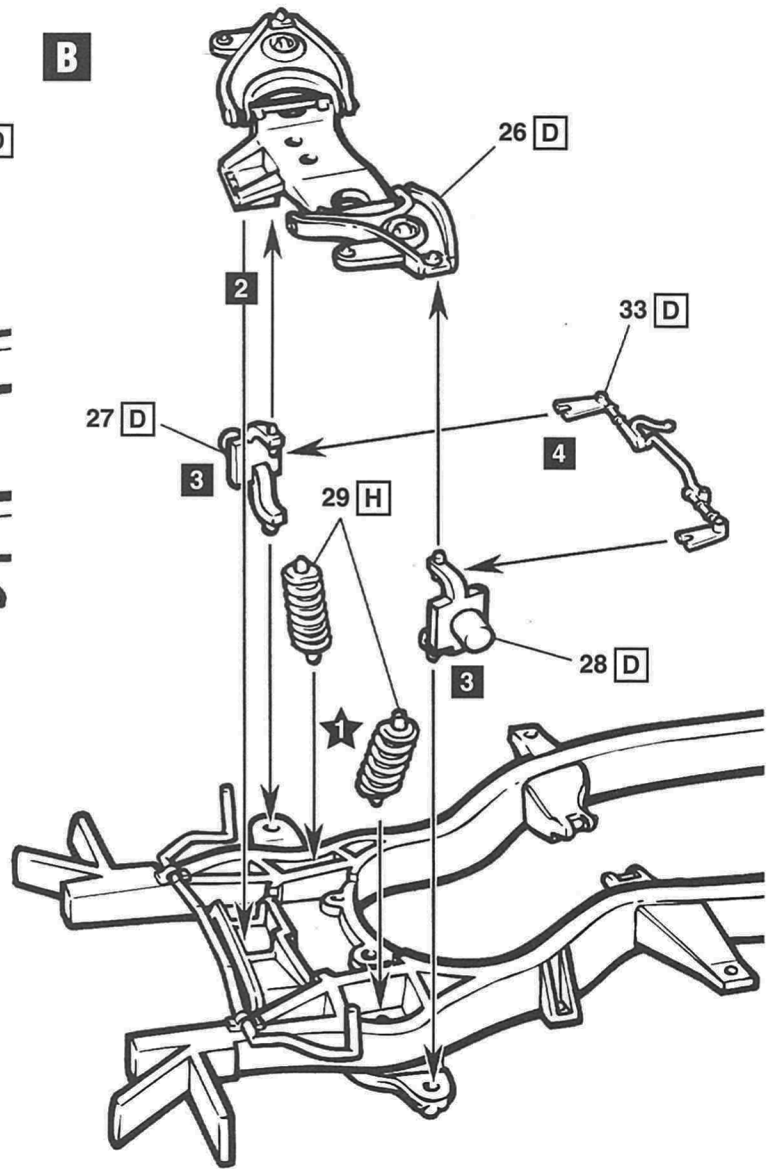
15 D



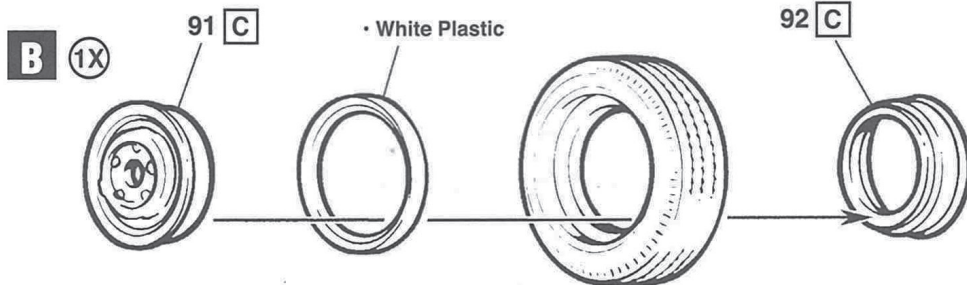
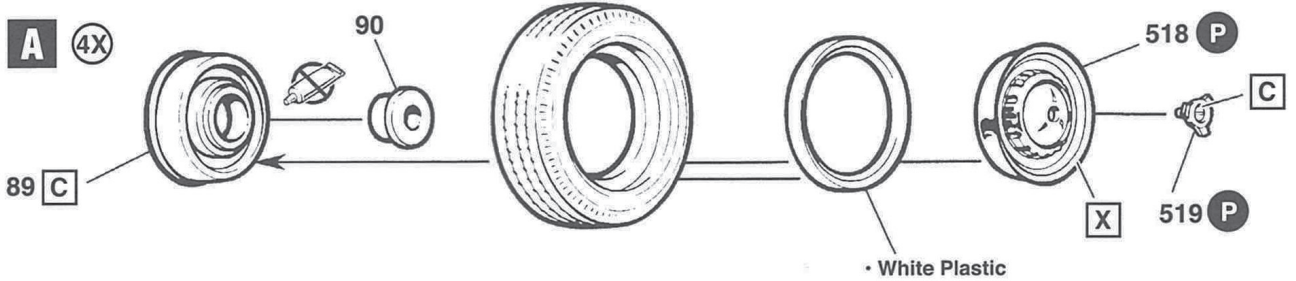
2



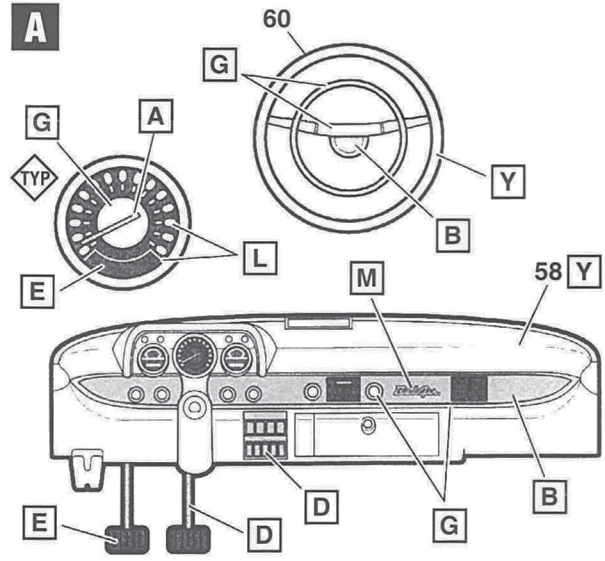
B



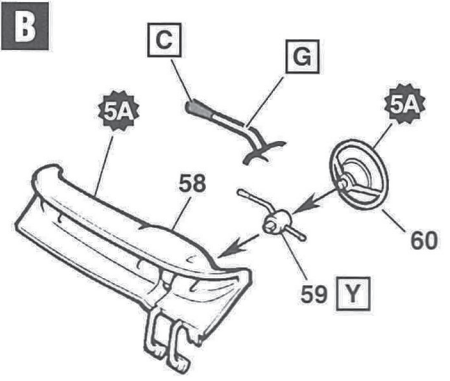
3



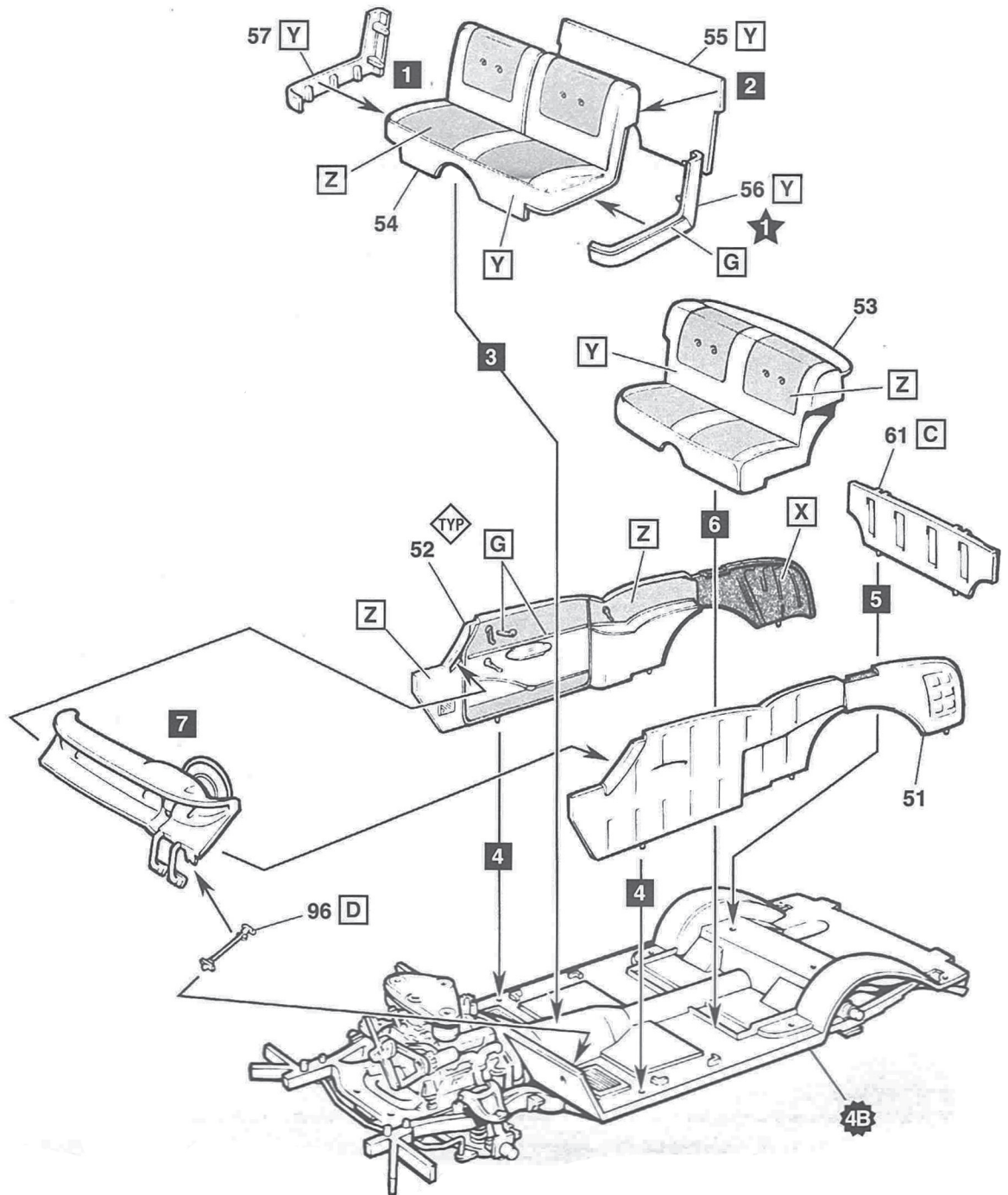
5 A



B

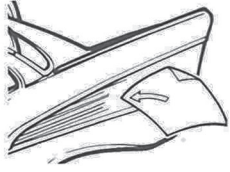


C

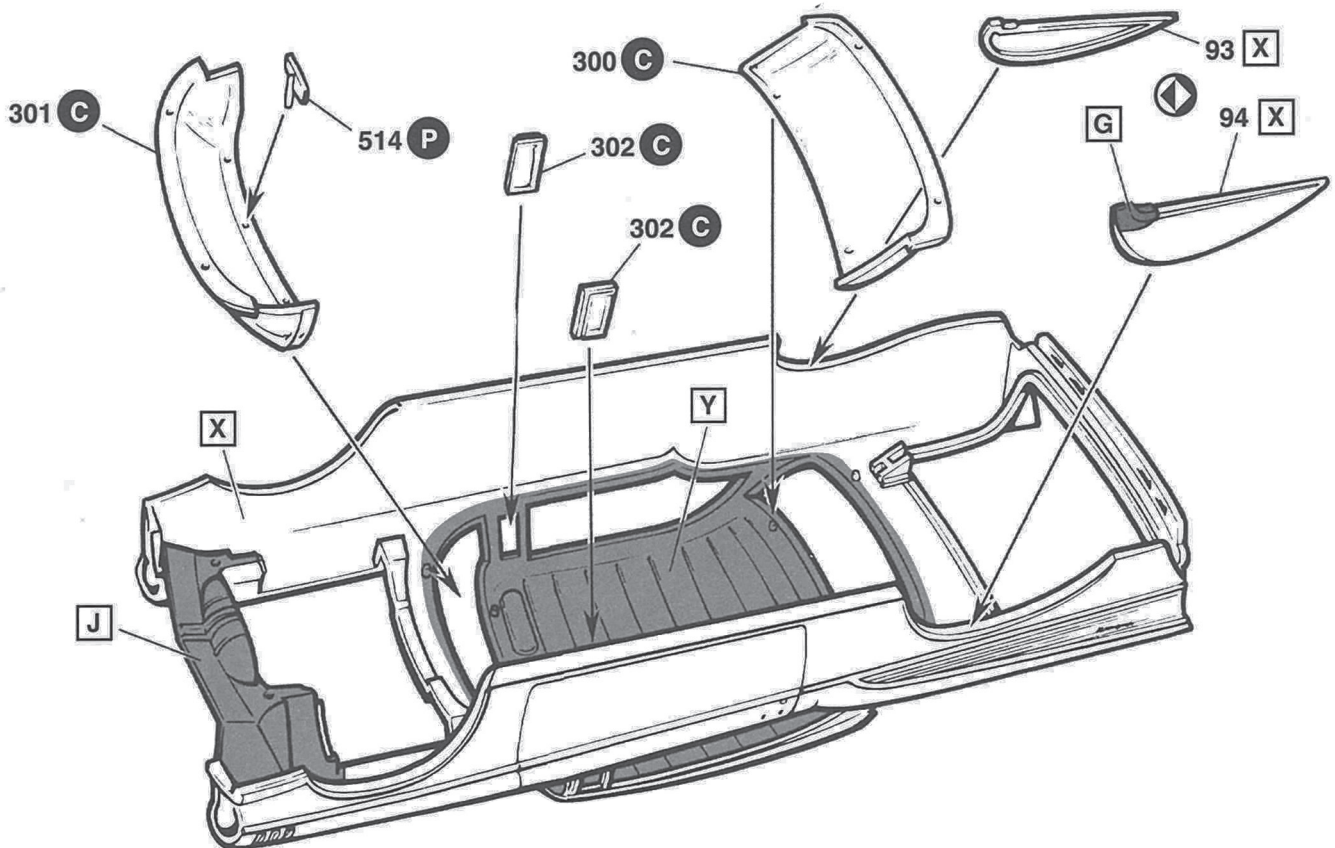
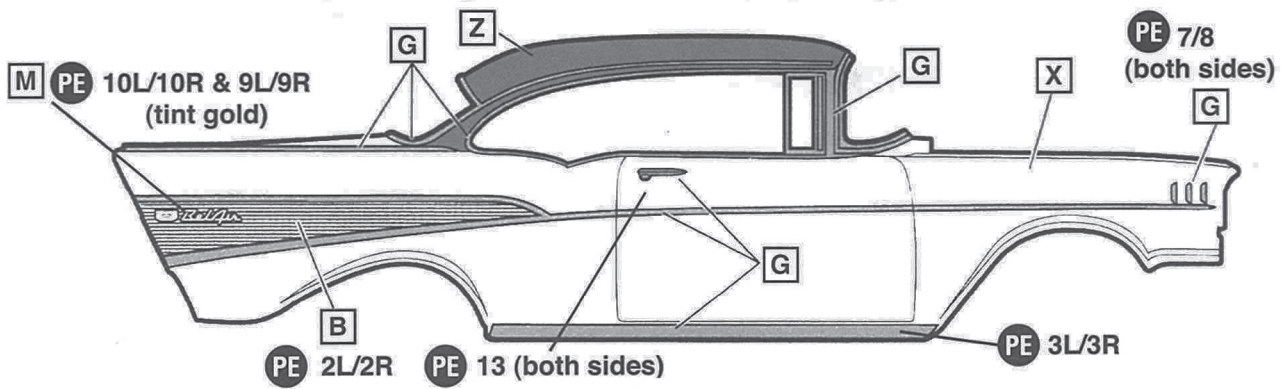


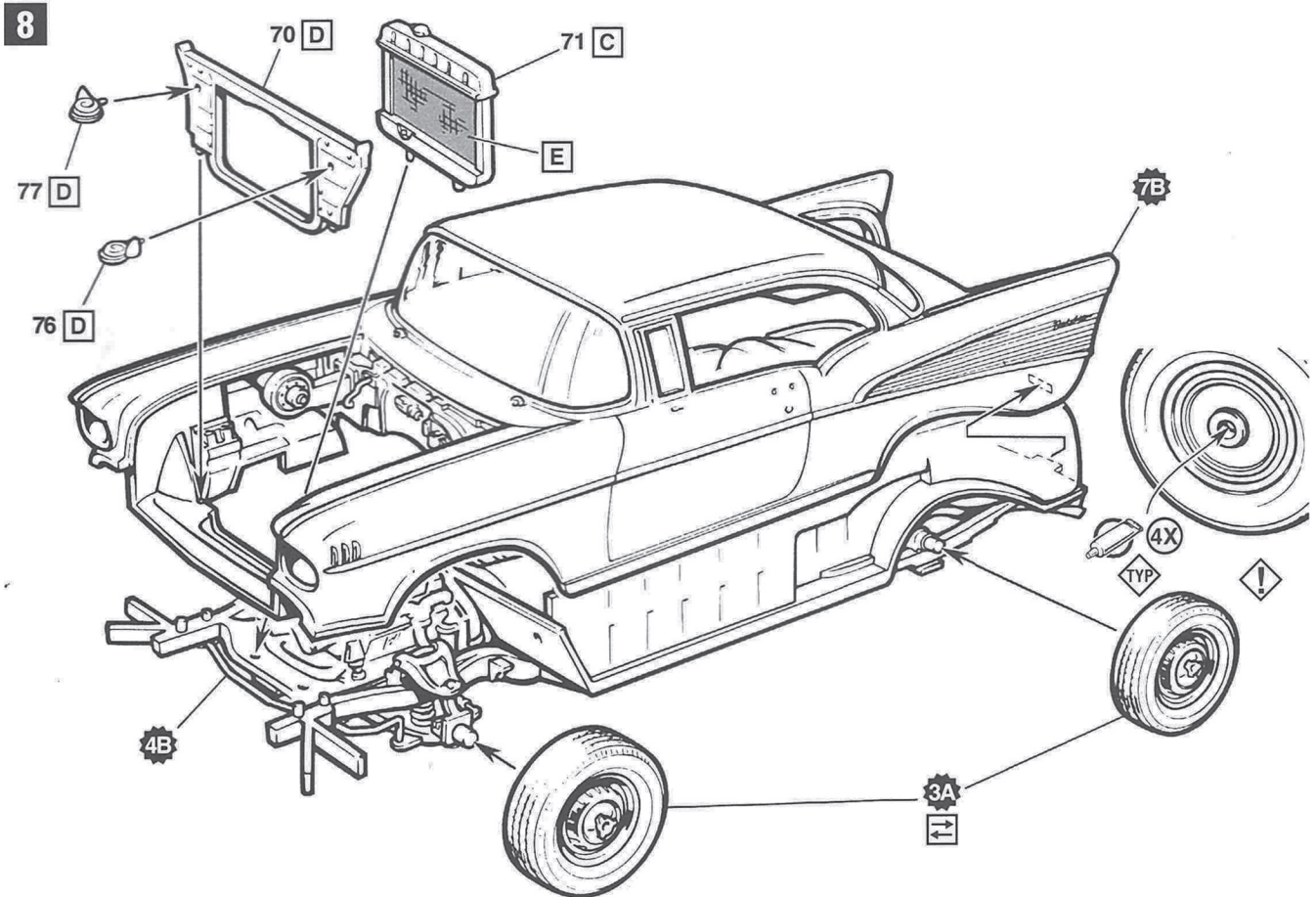
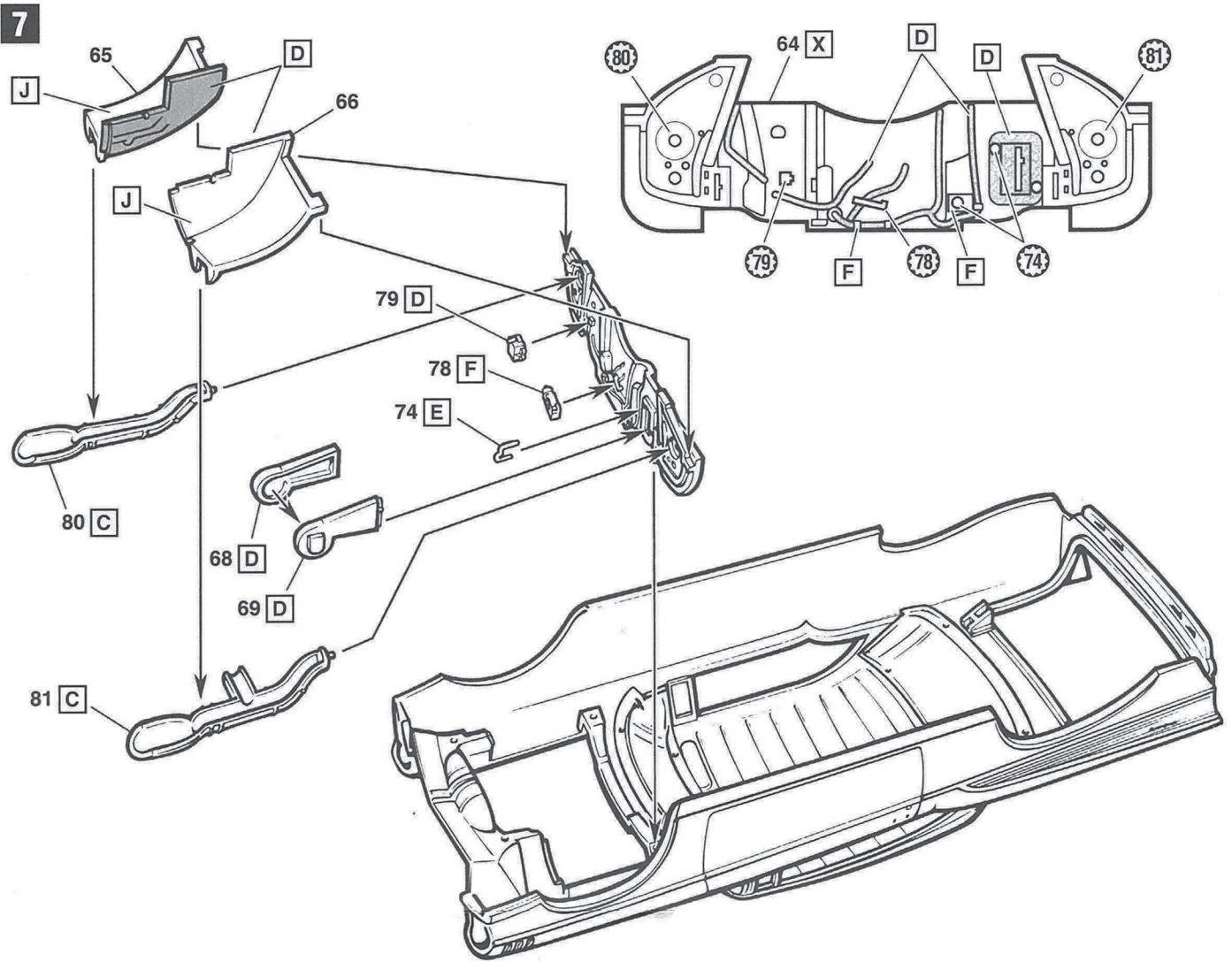
6

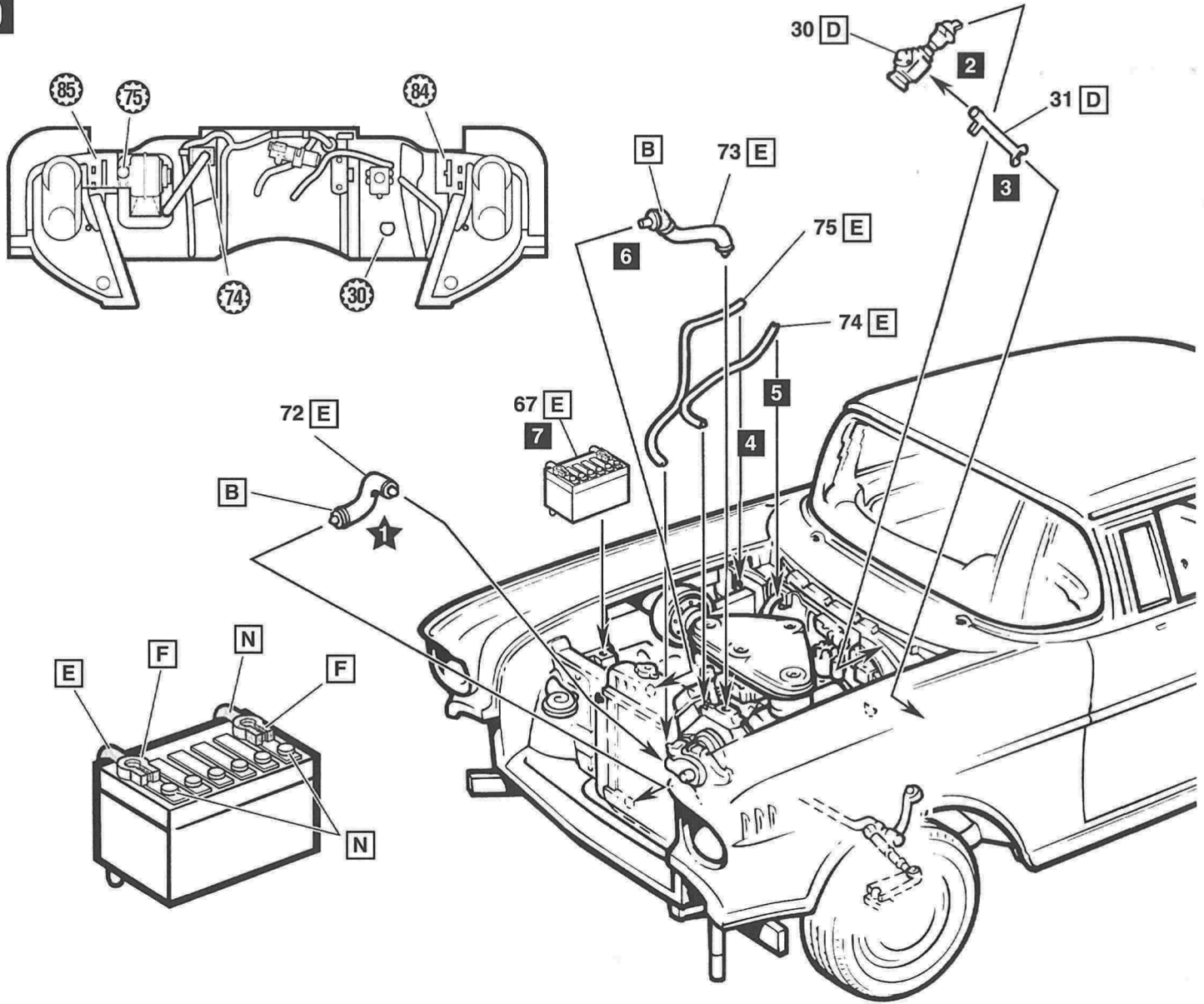
• See the Supplemental Detailing Instructions before you proceed.



• If you intend to use photo-etched material in this area, use a fine grit sandpaper to remove "ribs" before painting

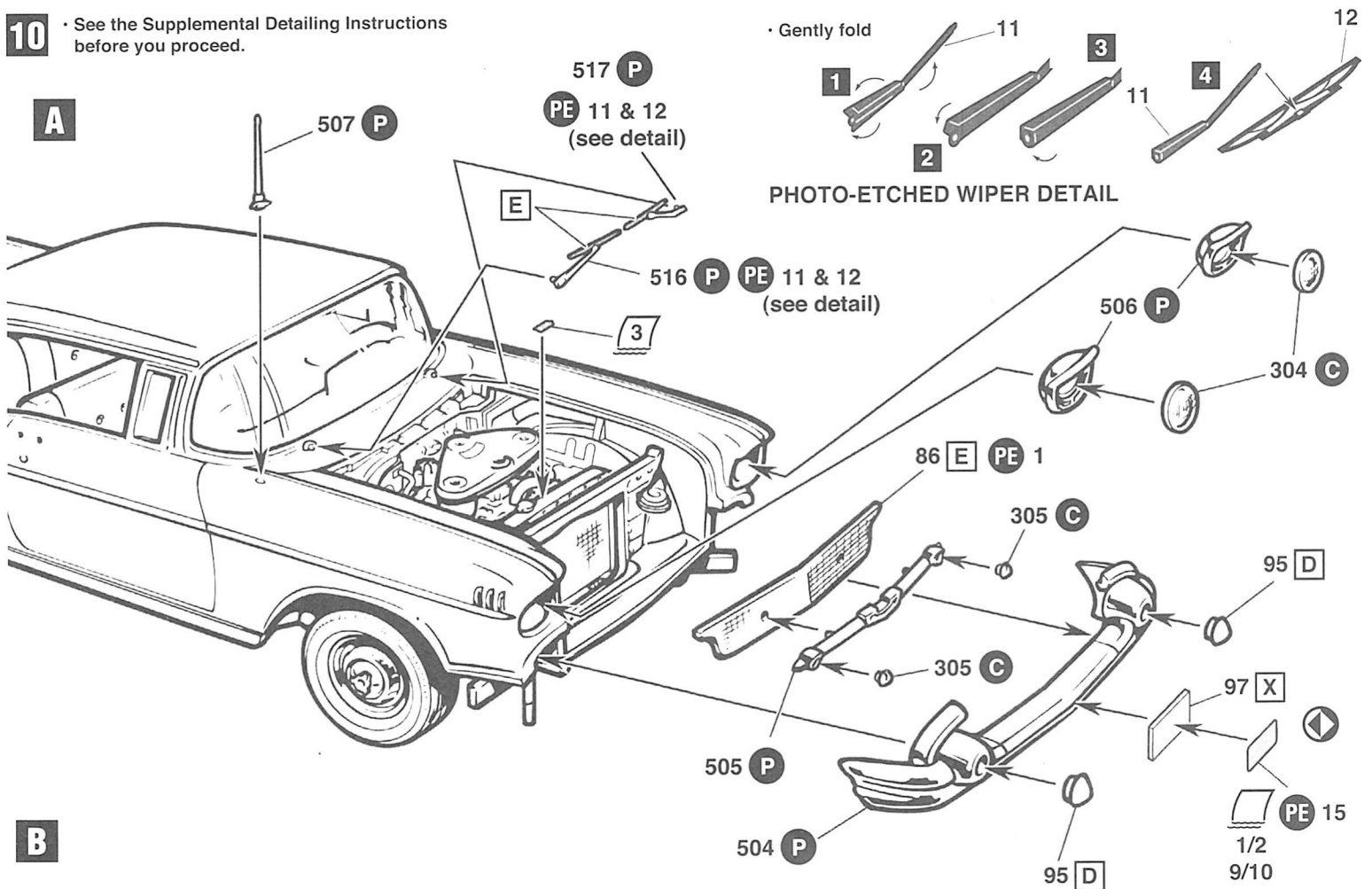






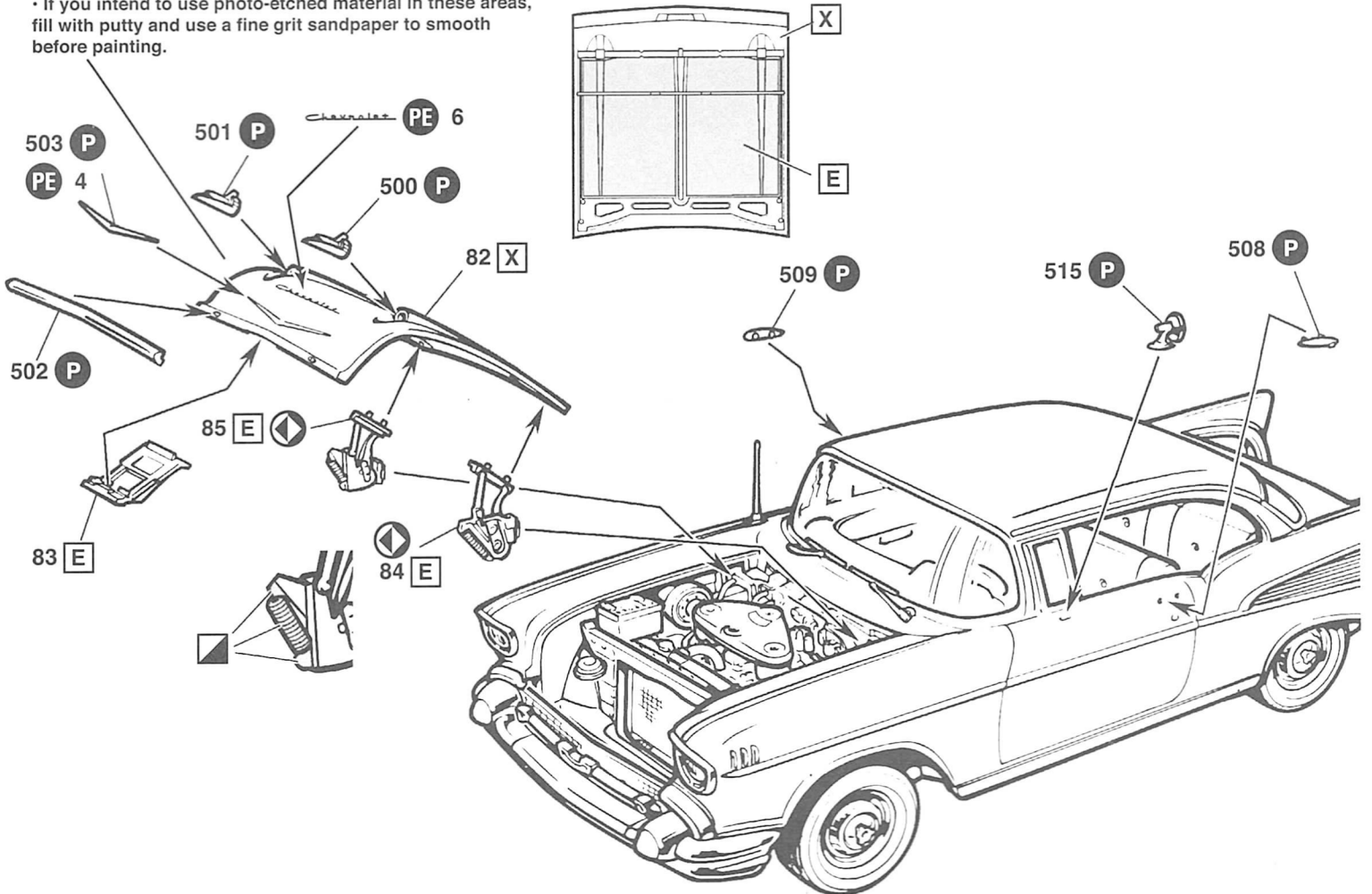
10 • See the Supplemental Detailing Instructions before you proceed.

A



B

• If you intend to use photo-etched material in these areas, fill with putty and use a fine grit sandpaper to smooth before painting.



C

• If you intend to use photo-etched material in these areas, fill with putty and use a fine grit sandpaper to smooth before painting.

