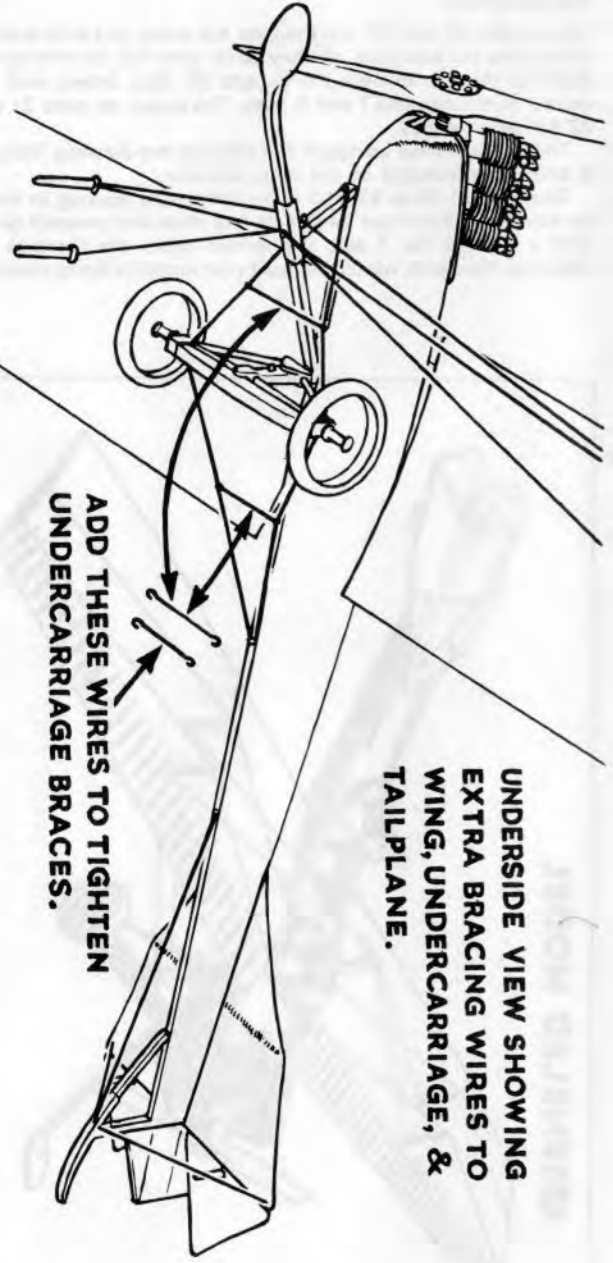
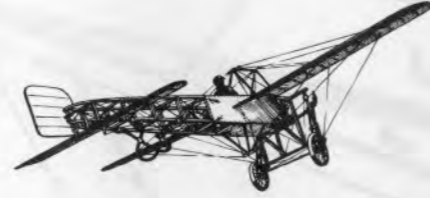


Those Magnificent Flying Machines



ADD THESE WIRES TO TIGHTEN UNDERCARRIAGE BRACES.

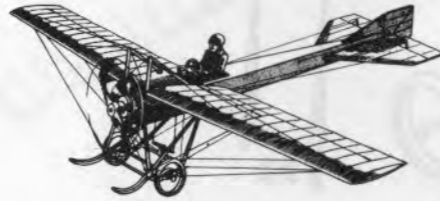
UNDERSIDE VIEW SHOWING EXTRA BRACING WIRES TO WING, UNDERCARRIAGE, & TAILPLANE.



BLERIOT P101



MARTIN HANDASYDE P102

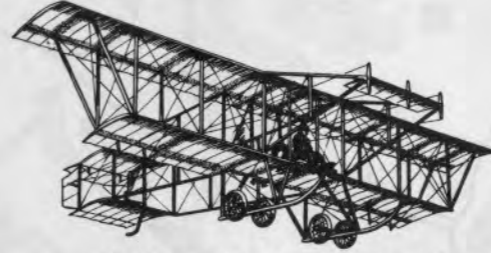


DEPERDUSSIN P103

COLLECT THESE OTHER FULLY DETAILED VETERAN AIRCRAFT MODELS IN $\frac{1}{48}$ SCALE



AVRO BIPLANE P104



BRISTOL BOXKITE P105



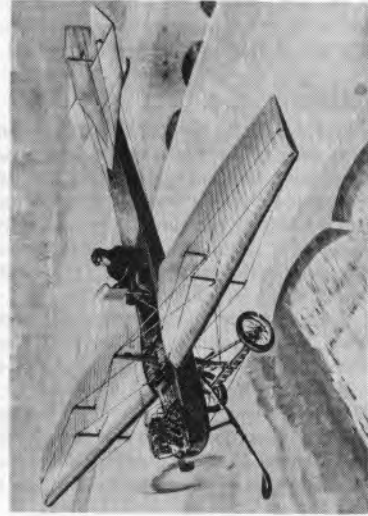
AVRO TRIPLANE P106

IMPACT
KITS

$\frac{1}{48}$ 0r $\frac{1}{4}$ = 1 FT. SCALE MARTIN HANDASYDE 1910

Veteran Series
P102

INSTRUCTIONS FOR ASSEMBLING YOUR MODEL



At first glance, the Martin Handasyde No. 3 Monoplane might be mistaken for an Antionette. To say it was of that type would be true. However it was a smaller and stronger aeroplane, and had many interesting features. The undercarriage incorporated telescopic legs to each half axle, the weight of which was supported on a leaf spring assembly below the axle. A J.A.P aircooled engine was installed, obviating the need of a radiator, and a plate attached to the control column helped to keep some of the oil from the pilot. Direction was effected by warping the wings. Martin Handasyde Monoplanes were made at Brooklands and could be had as single or double seat versions, the 2 seater having a Gnome rotary engine.

IMPORTANT

Use cement sparingly to avoid ugly marks on unpainted parts. Painting instructions have been included but the wings and tail have been moulded in natural colour and texture, and therefore will look better unpainted. On parts which are painted before assembling, check that the cementing areas are free of paint, or weak joints will occur.

Start by mixing up a little yellow paint mixed with gold to represent brass, and paint parts 17, 21, 22 and the pipes on part 23. The rest of 23 paint light brown, also part 11, excluding the shaft, and parts 1 and 10. Parts 18, 19 and 20 should be cemented together and painted grey. The tyres on parts 26 and 27 are dark grey, spokes light grey. Cement 30 to 29, and paint the pilot as you wish. Put these parts aside to dry.

FUSELAGE ASSEMBLY

Cement part 1 down between the locations in part 2. Then apply cement along the inside edges of part 2 and fit part 3 into place, ensuring that it is up against the two stops at the tail end. Add part 4 into the space left at the front of part 2. Take parts 5 and 6 and cement together at the location pips, then dab cement in the round hole under the nose of part 2, and the slot nearest to it. Push the joined 5 and 6 through the slot till it touches part 3, and locate the front brace into the front hole.

Apply cement to the top edges of part 2, at the rear of part 3, and fit part 7 into place, locating into the round hole in part 3. Cement part 8 down into the slots in part 7. Part 9 is then cemented to parts 2 and 8. Cement part 10 into its location on top of part 2, the front rib overlapping into the cutout in part 3. Then cement 18 into part 1.

ENGINE

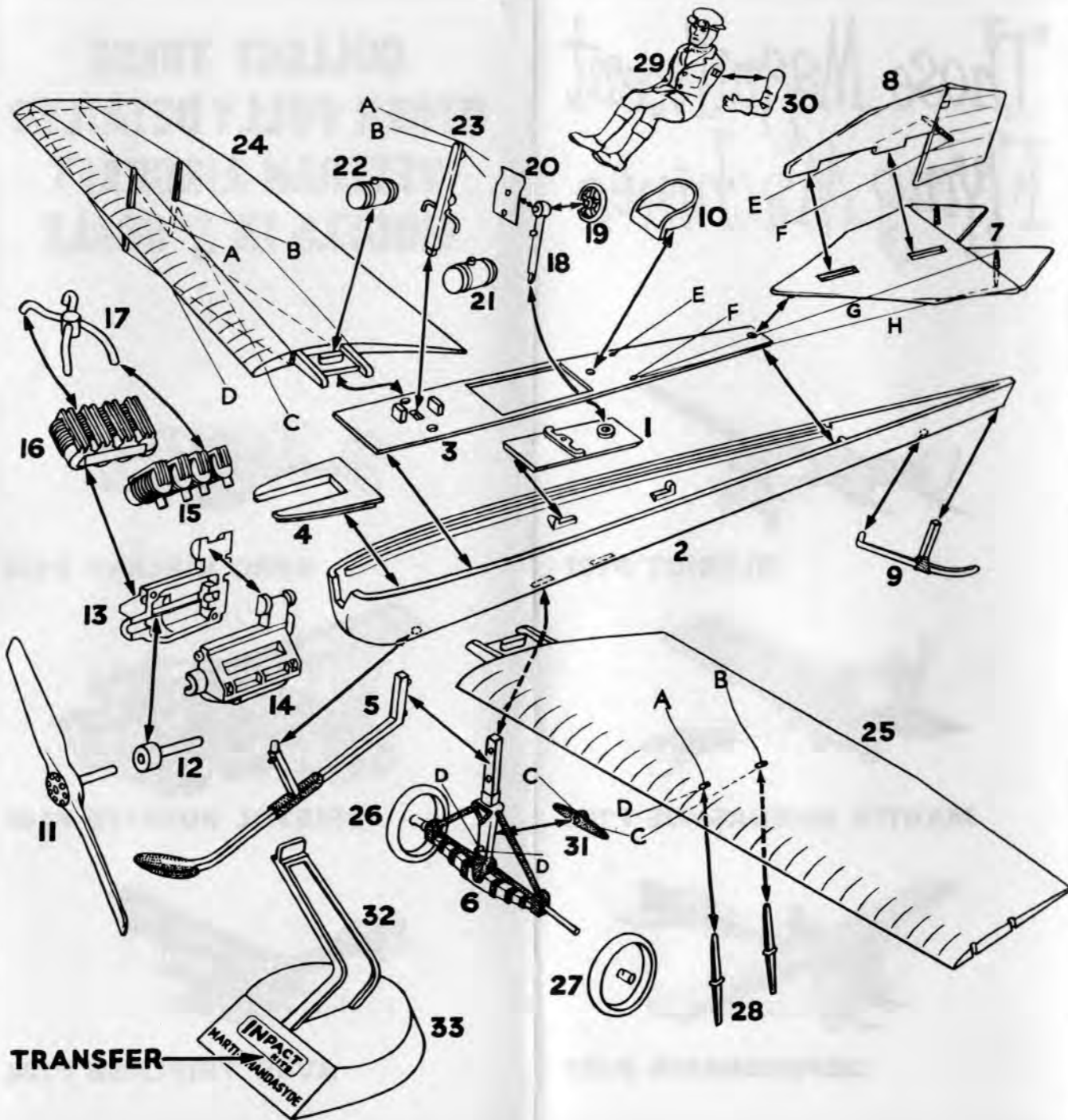
Cement the shaft on part 11 into the hole in part 12, locate into part 13, and cement 14 to 13, making sure no cement gets onto part 12, preventing it from revolving. Cement parts 15 and 16 onto parts 13 and 14, locating them in the grooves, with the exhaust pipes facing outwards. Cement the engine down onto part 4, locating it in the slot. Cement part 17 into place, each arm fitting between the outer cylinder heads on parts 15 and 16.

At this stage parts 2, 3 and 4 should be painted dark brown. Paint 15 and 16 dark grey, 13 and 14 silver. 5 and 6 paint light brown, with shaded areas grey. Part 9 is light brown. Do not paint 7 and 8 as these are natural colour.

WINGS

Take four pieces of thread about 12" long and pass one piece through each of the holes in the wings parts 24 and 25, with an equal amount hanging each side. Then take one strut 28, apply cement to the ridge at the longest end, and push through one of the holes carrying the thread. Repeat with the other three struts 28. Take four more pieces of thread and rig the wing 24 as shown, cementing the thread to the strut ends and where they touch the wing. Repeat on part 25.

Now apply cement under the spar ends of the wings and fit them into their location holes in part 3. Parts 21 and 22 can now be cemented down over the location ribs on 24 and 25. Cement part 23 into the slot in part 3, between 21 and 22. Now take the top thread marked A and join them together at the top of part 23, fixing with cement. Take threads B and join these over 23 as shown. Cement part 31 to part 6, and join threads C to this. The thread marked D is joined to the peg on part 6.



P.T.O.

FINISHING

Take wheels 26 and 27, slip them on the axles, and with a warm knife press the axle ends till they swell, securing the wheels but allowing them to revolve. Paint parts 28 light brown and the control horns on parts 7 and 8, grey. The straps on parts 21 and 22 can also be grey.

The tailplanes can be rigged by following the drawing. Threads G and H are repeated on the other elevator.

Cement part 32 to 33, and apply transfer by soaking in water for a minute when it can be slid off into place and pressed down with a cloth to fix. A slot is provided under the fuselage for attaching the stand, which will hold your model in flying position.

