






Spitfire Mk.22/Mk.24

ATTENTION * UPOZORNĚNÍ * ACHTUNG * ATTENTION

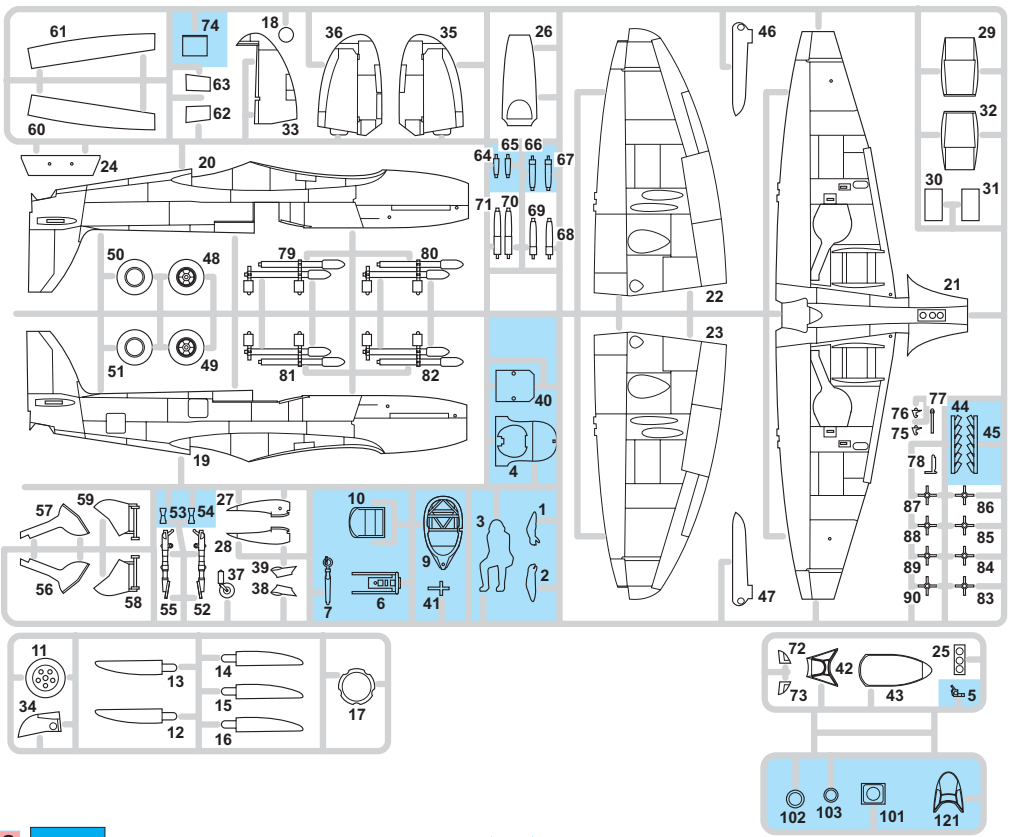
-  Carefully read instruction sheet before assembling. When you use glue or paint, do not use near open flame and use in well ventilated room. Keep out of reach of small children. Children must not be allowed to suck any part, or pull vinyl bag over the head.
-  Před započatím stavby si pečlivě prostudujte stavební návod. Při používání barev a lepidel pracujte v dobře větrané místnosti. Lepidla ani barvy nepoužívejte v blízkosti otevřeného ohně. Model není určen malým dětem, mohlo by dojít k požití drobných dílů.
-  Von dem Zusammensetzen die Bauanleitung gut durchlesen. Kleber und Farbe nicht nahe von offenem Feuer verwenden und das Fenster von Zeit zu Zeit Belüftung öffnen. Bausatz von kleinen Kindern fernhalten. Verhüten Sie, daß Kinder irgendwelche Bauteile in den Mund nehmen oder Plastiktüten über den Kopf ziehen.
-  lire soigneusement la fiche d'instructions avant d'assembler. Ne pas utiliser de colle ou de peinture à proximité d'une flamme nue, et aérer la pièce de temps en temps. Garder hors de portée des enfants en bas âge. Ne pas laisser les enfants mettre en bouche ou sucer les pièces, ou passer un sachet vinyl sur la tête.
-  組み立てる前に必ず説明書をお読み下さい。接着剤や塗料をご使用する際は、窓を開けて十分な換気をおこない、火のそばでは使用しないで下さい。小さな子供の手の届かない所に必ず保管してください。部品や破片を囁んだり、なめたり、飲んだりすると大変危険です。又、部品を取り出した後のビニール袋は、小さな子供が頭から破ったりすると窒息する恐れがありますので、破り捨てして下さい。

INSTRUKTION SIGNS * INSTR. SYMBOLY * INSTRUKTION SINNBILDEN * SYMBOLES

-  OPTIONAL FACULTATIF NACH BELIEBEN VOLBA
-  BEND PLIER SIL VOUS PLAIT BITTE BIEGEN OHNOUT
-  OPEN HOLE FAIRE UN TROU OFFNEN VYVRTAT OTVOR
-  SYMMETRICAL ASSEMBLY MONTAGE SYMÉTRIQUE SYMMETRISCHE AUFBAU SYMMETRICKÁ MONTÁŽ
-  NOTCH L INCISION DER EINSCHNITT ZÁREZ
-  REMOVE RETIRER ENTFERNEN ODRÍZNOUT
-  APPLY EXPRESS MASK AND PAINT BEFORE GLUING POUŽIT EXPRESS MASK NABARVIT PŘED SLEPENÍM

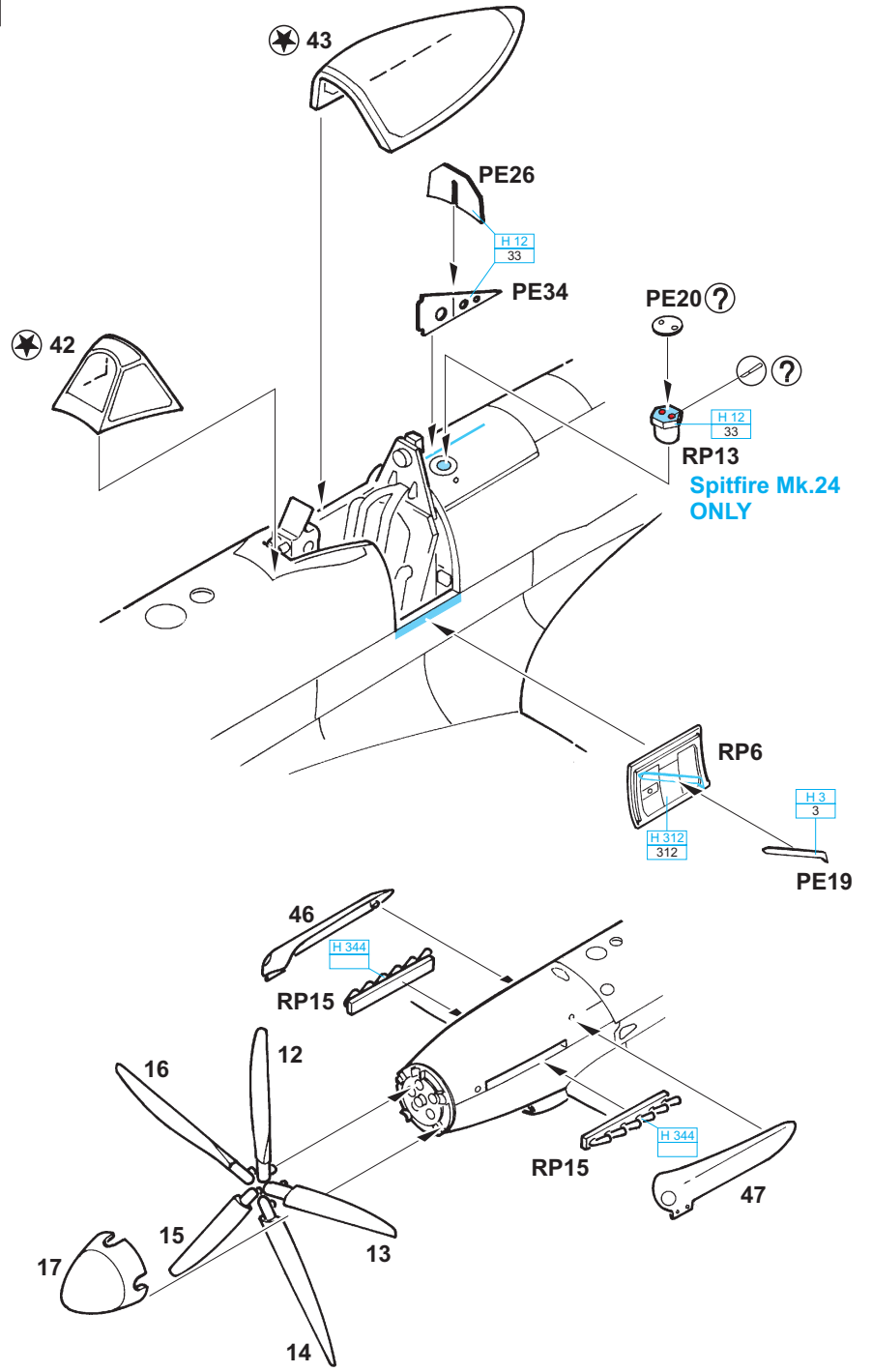
GUNZE		APPROXIMATE COLOR MATCH				
AQUEOUS	Mr.COLOR	TAMIYA	HUMBROL	REVELL	TESTORS	
H 1	1	WHITE / WEIß / BLANC / BÍLÁ	X 2	22	4	1745
H 2	2	BLACK / SCHWARZ / NOIR / ČERNÁ	X 1	21	7	1747
H 3	3	RED / ROT / ROUGE / ČERVENÁ	X 7	19	31	1590
H 4	4	YELLOW / GELB / JAUNE / ŽLUTÁ	X 8	69	12	1514
H 5	5	BLUE / BLAU / BLEU / MODRÁ	X 3	15	53	2715
H 12	33	FLAT BLACK / MATTSCHWARZ / NOIR MATT / ČERNÁ MATNÁ	XF 1	33	8	1749
H 47	41	RED BROWN / ROT BRAUN / BRUN- ROUGE / ČERVENOHNĚDÁ	XF 64	160	383	
H 71	21	MIDDLE STONE / STEINGRAU / GRIS PIERRE / ŠEDÁ	XF 60	84	88	
H 72	22	DARK EARTH / ERDFARBE / TERRE FONCÉE / ZEMITÁ HNĚDÁ	XF 52	29	87	1742
H 74	26	SKY / HIMMEL / BLEU OEUF DE CANARD / NEBESKÁ MODŘ	XF 21	23		2349
H 90	47	CLEAR RED / ROT, REIN / ROUGE TRANSPAR. / ČERVENÁ	X 27			
H 92	49	CLEAR ORANGE / ORANGE, REIN / ORANGE TRANSPAR. / ORANŽOVÁ	X 26			
H 94		CLEAR GREEN / GRÜN, REIN / VERT TRANSPAR. / ZELENÁ	X 25			
H 312	312	GREEN / GRÜN / GRIS / ŠEDÁ	FS23232	120		
H 344		RUST / ROST / ROUILLE / REZ	XF 52	113		
H 361		DARK GREEN / DUNKEL GRÜN / VERT FONCÉ / TMAVÉ ZELENÁ				
H 362		OCEAN GRAY / GRAU / GRIS / ŠEDÁ				
H 364		MEDIUM SEA GRAY / GRAU / GRIS / ŠEDÁ				
H 370		AZURE BLUE / BLAU / BLEU / MODRÁ				
Mr.METAL COLOR						
MC218		ALUMINIUM / ALUMINIUM / ALUMINIUM / HLINÍK	X 56	56	99	1781

PP - PLASTIC PARTS

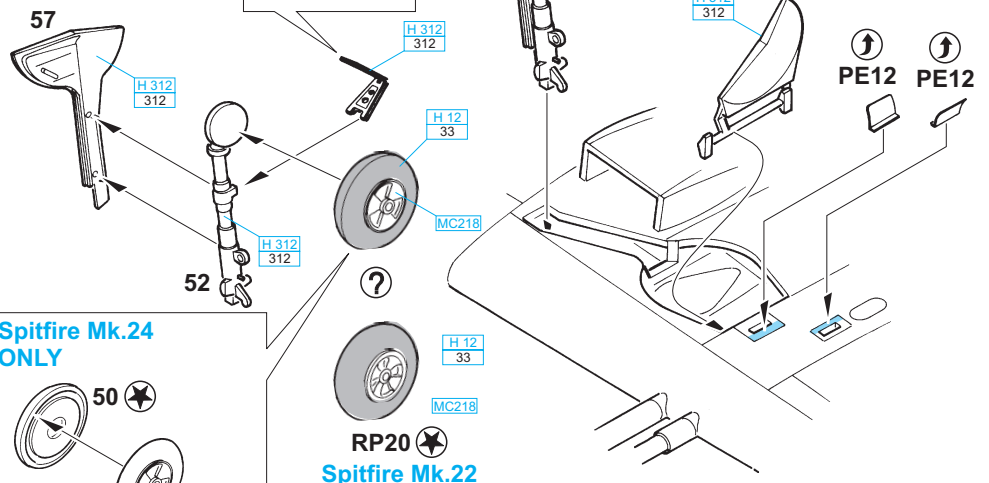
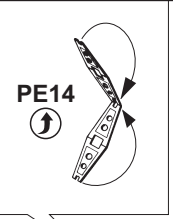


1121

8

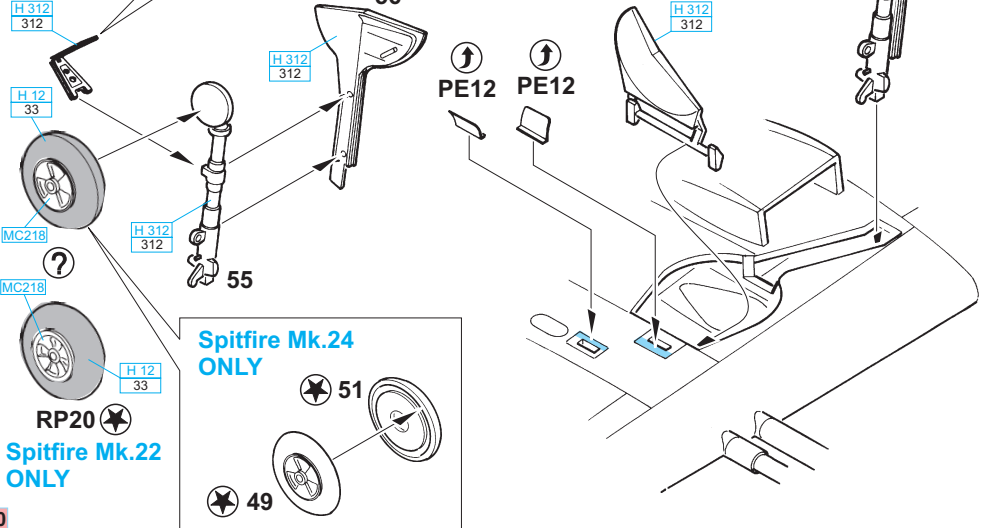
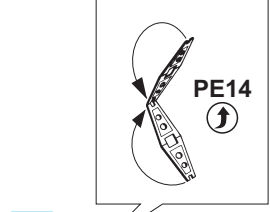


2 pcs. RP20
Ø - 6,5mm



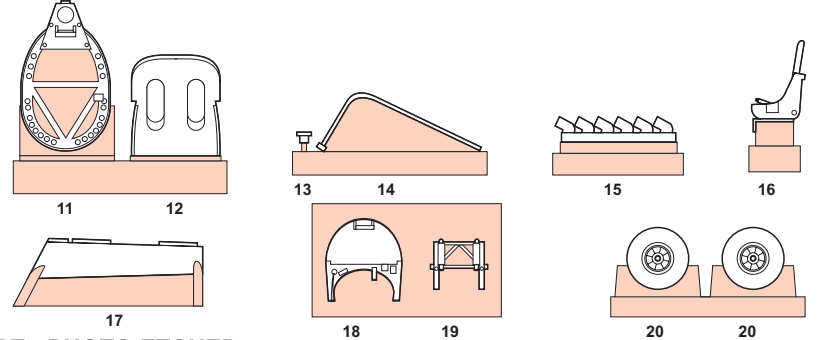
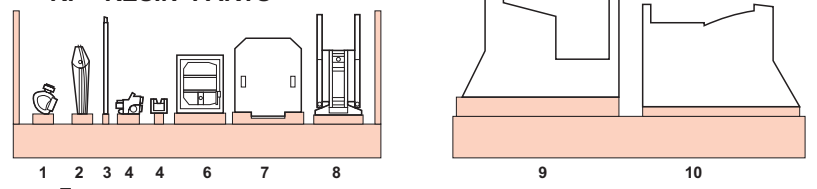
Spitfire Mk.24 ONLY
50
48

Spitfire Mk.22 ONLY
RP20

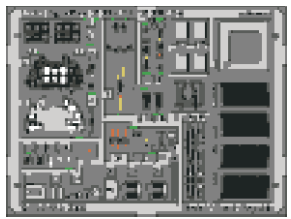


Spitfire Mk.24 ONLY
51
49

RP - RESIN PARTS



PE - PHOTO ETCHED
DETAIL PARTS



eduard
MASK

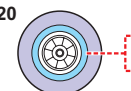


eduard
MASK

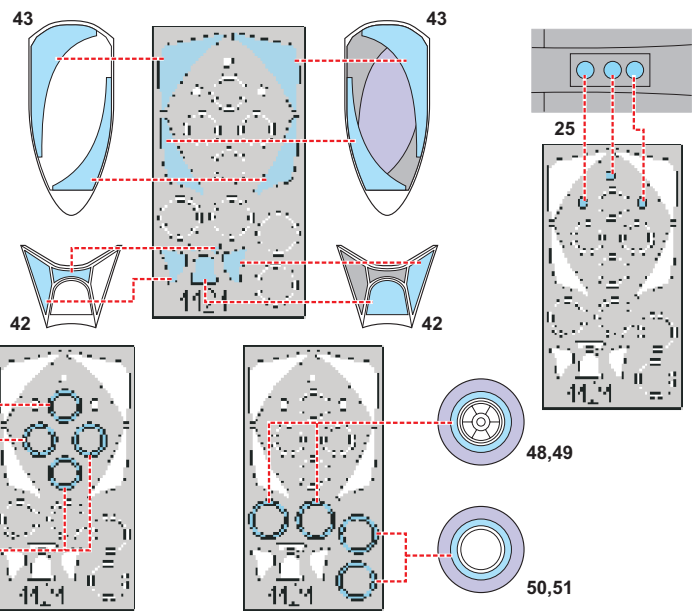
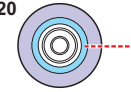
1121

LIQUID MASK

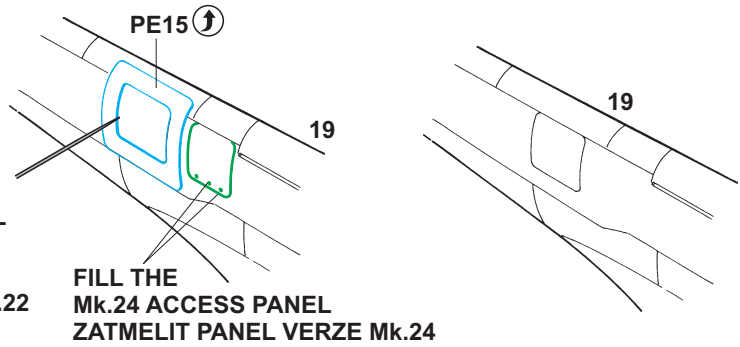
2 pcs. RP20



2 pcs. RP20



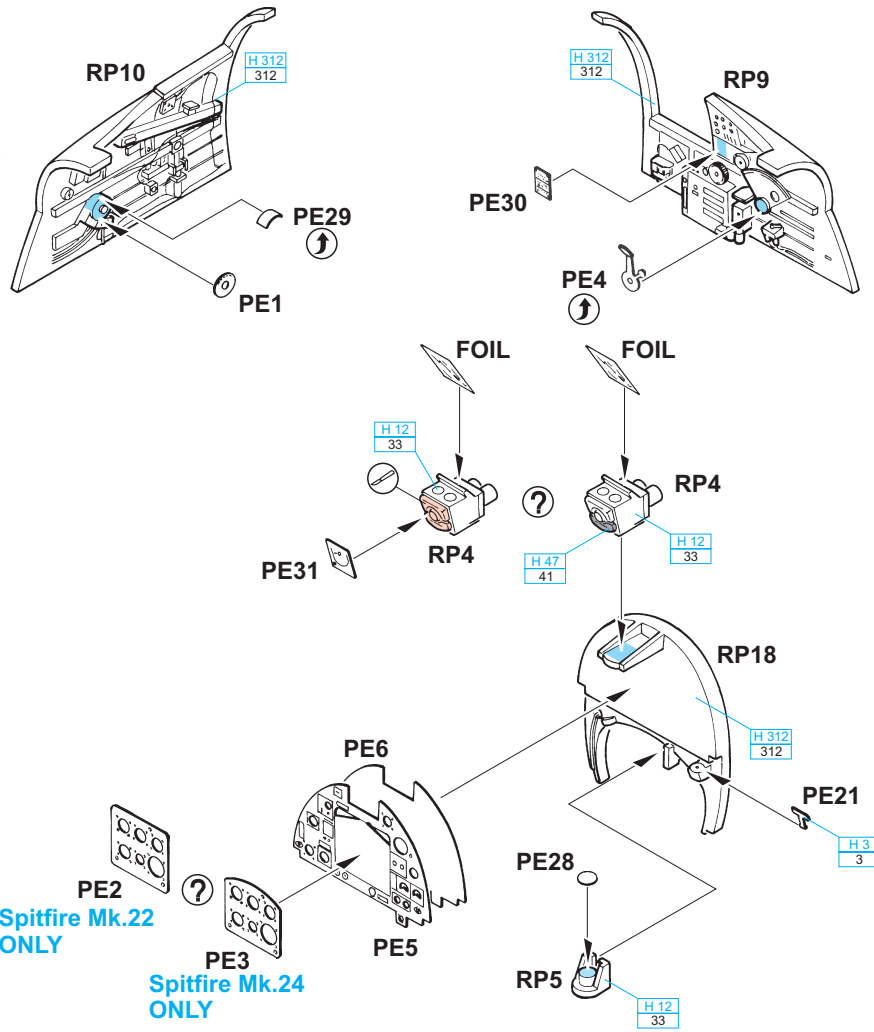
1 RESCRING TEMPLATE ONLY. DO NOT GLUE!! PŘERÝVACÍ ŠABLONA. NELEPIT!



RESCRIBE THE
ACCESS PANEL
FOR Mk.22

NARÝT PANEL
PRO VERZI Mk.22

FILL THE
Mk.24 ACCESS PANEL
ZATMELIT PANEL VERZE Mk.24

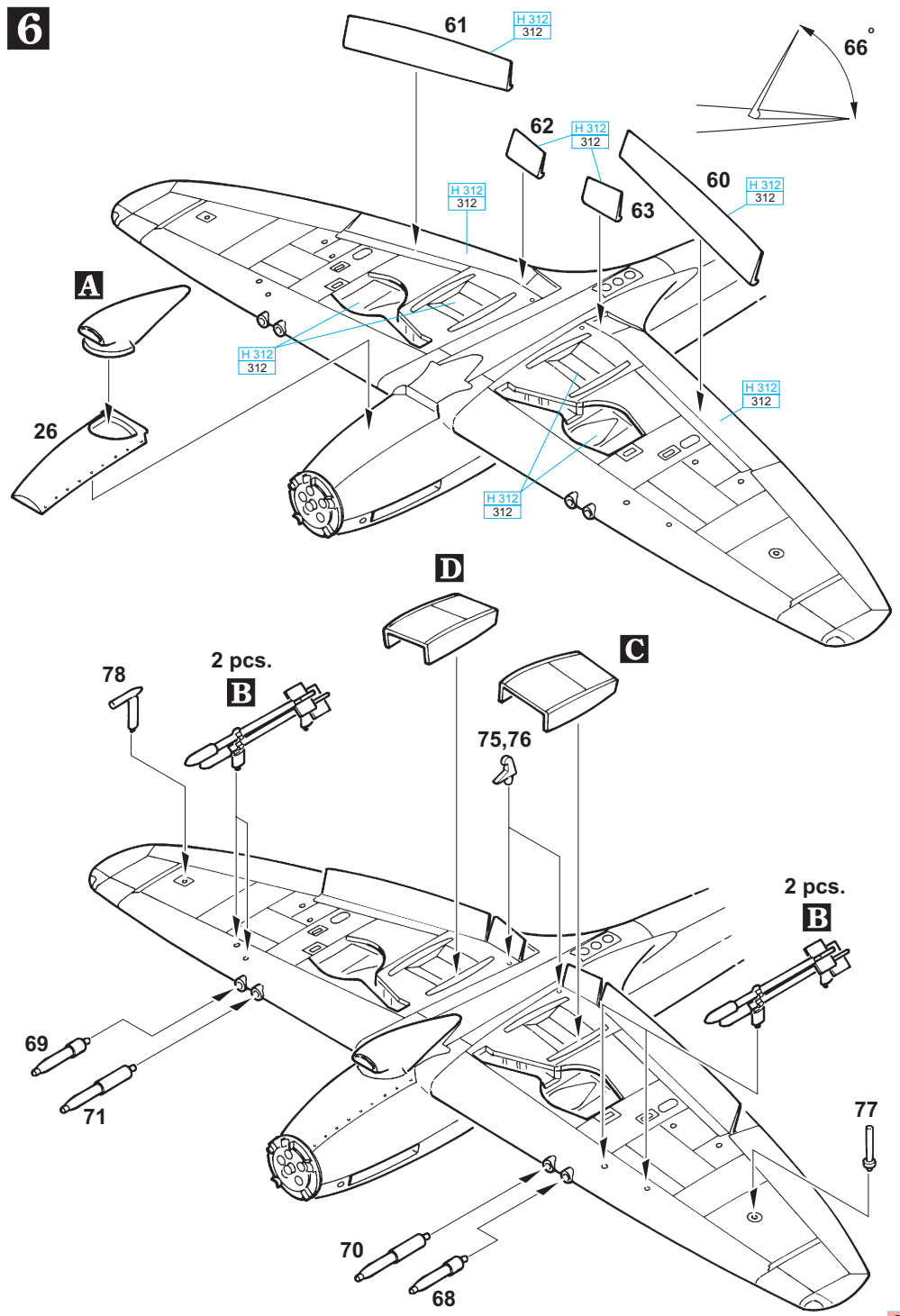


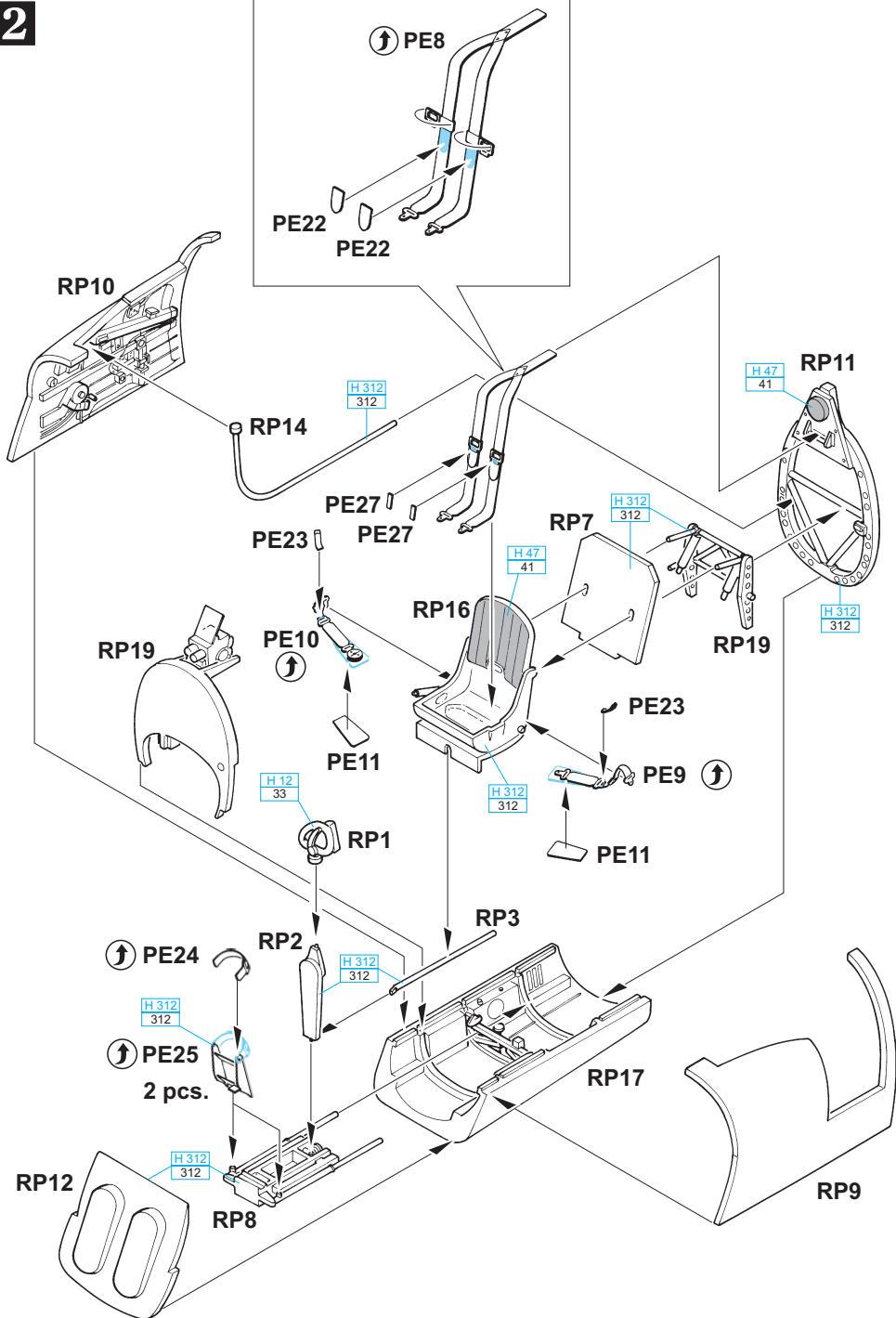
Spitfire Mk.22
ONLY

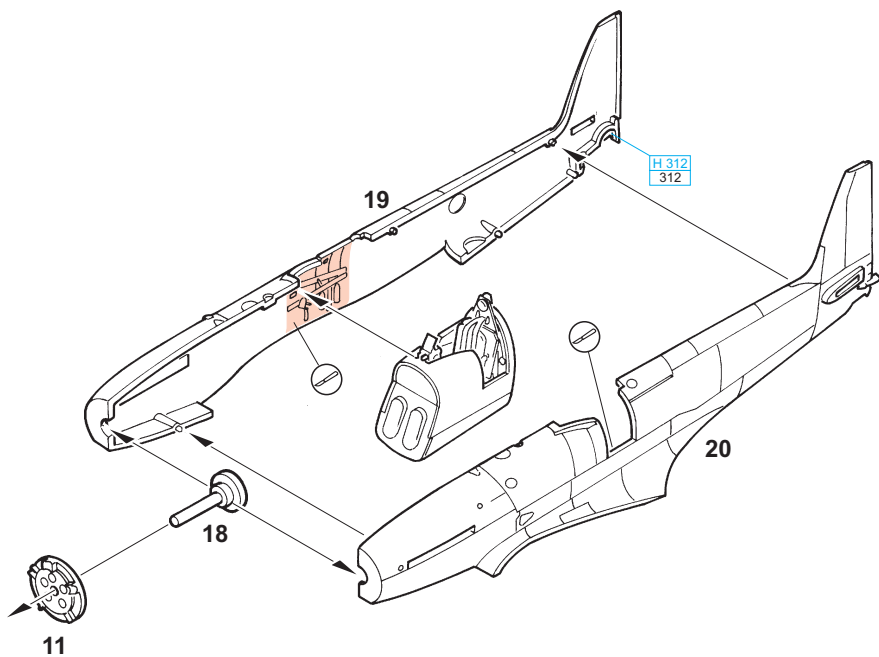
Spitfire Mk.24
ONLY

1121

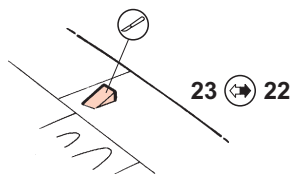
6



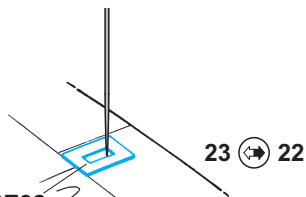




**CLOSED FLAPS
ZAVŘENÉ KLAPKY**

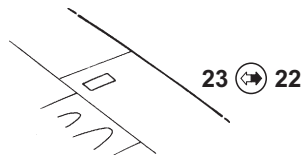


23 → 22



23 → 22

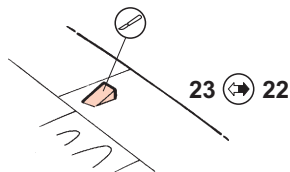
**PE32
DO NOT GLUE!
NELEPIT!**



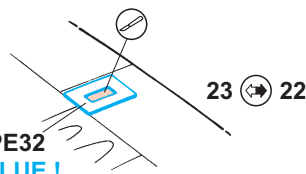
23 → 22



**OPEN FLAPS
OTEVŘENÉ KLAPKY**

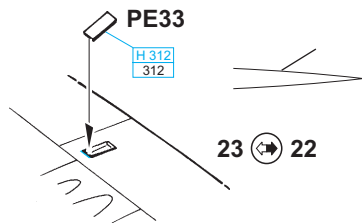


23 → 22



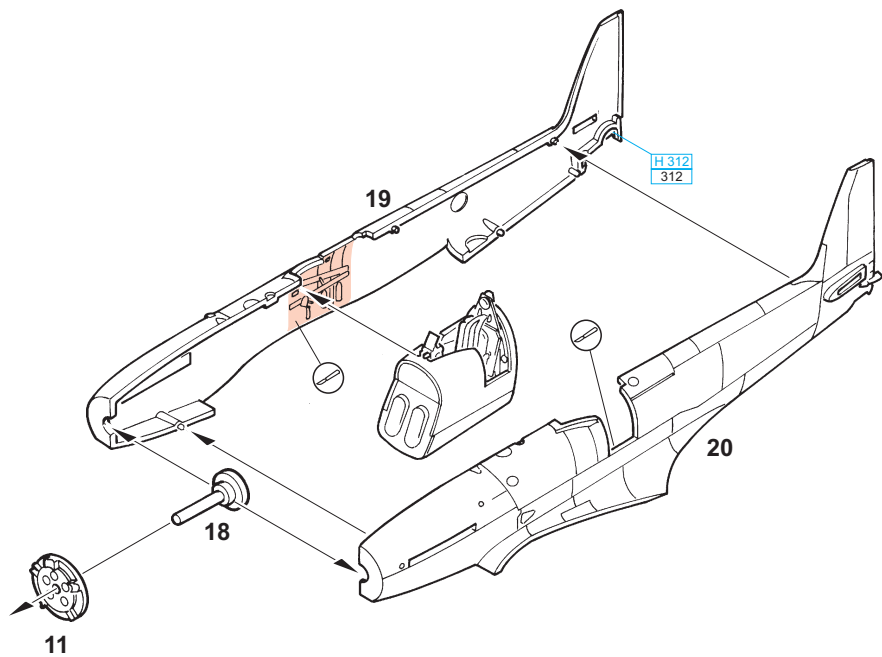
23 → 22

**DO NOT GLUE!
NELEPIT!**

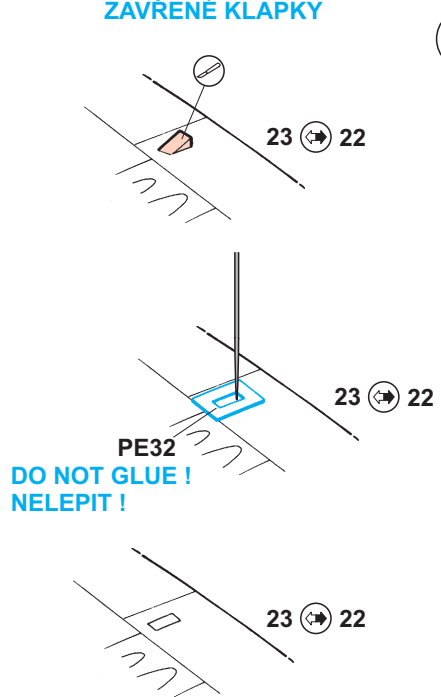


23 → 22

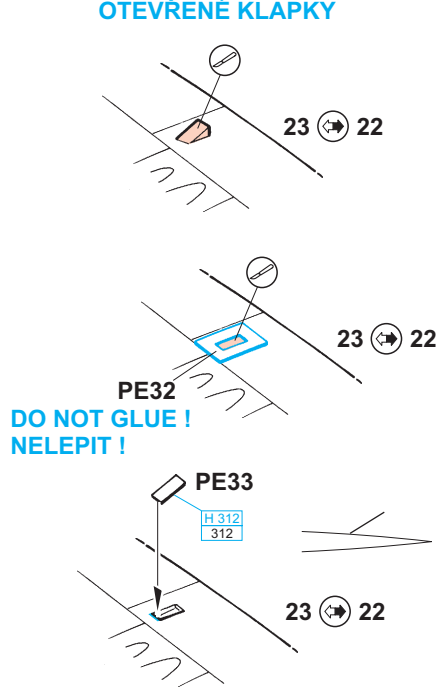
3



**CLOSED FLAPS
ZAVŘENÉ KLAPKY**

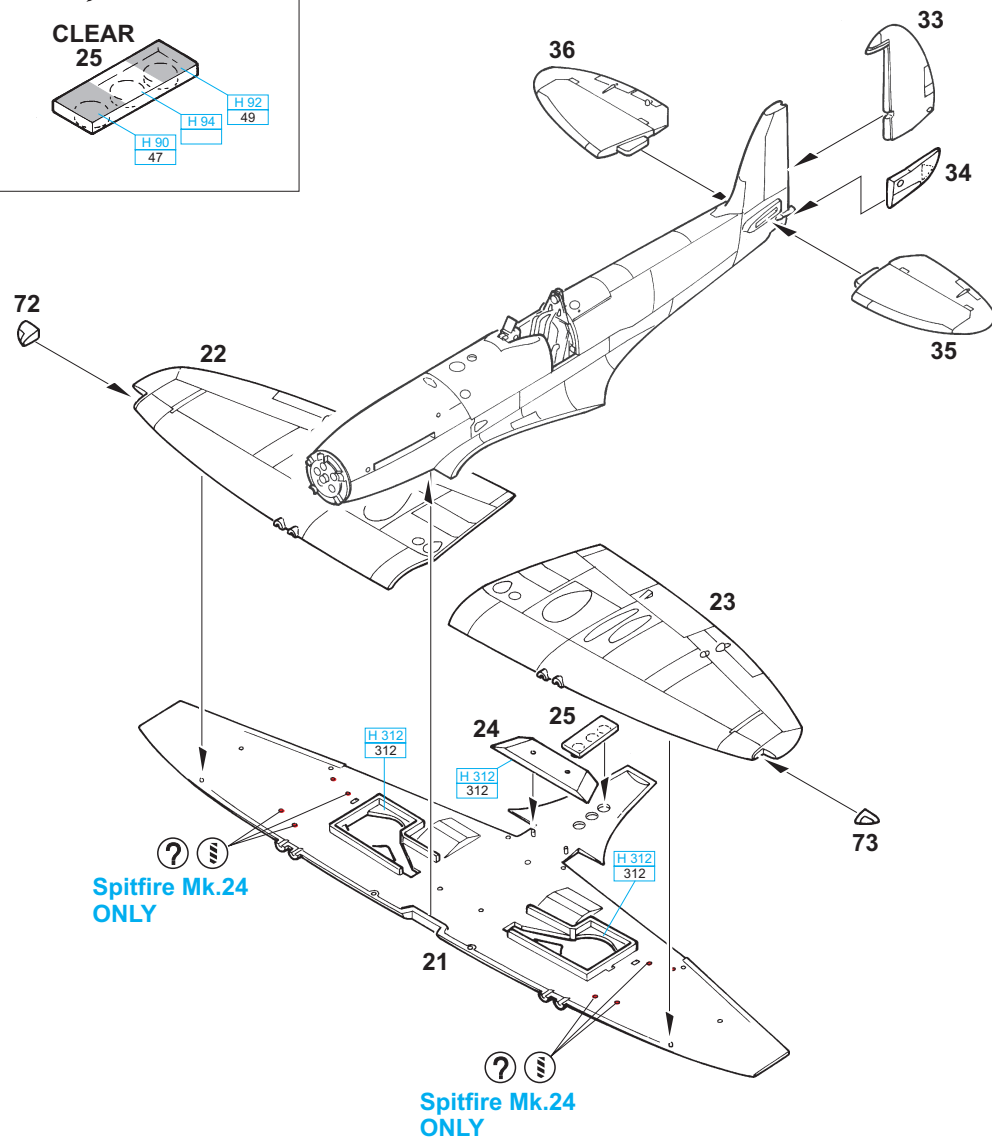
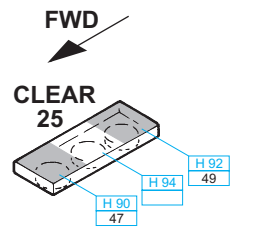


**OPEN FLAPS
OTEVŘENÉ KLAPKY**



1121

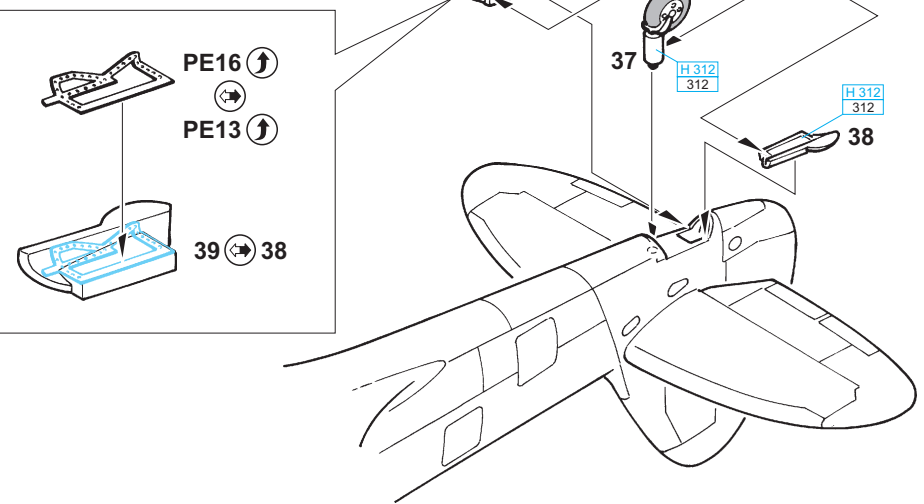
4



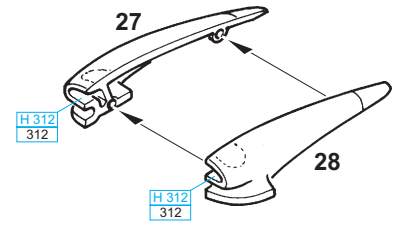
**Spitfire Mk.24
ONLY**

**Spitfire Mk.24
ONLY**

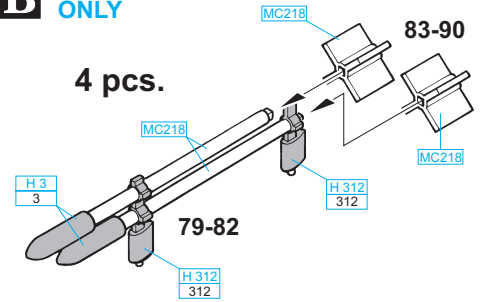
5



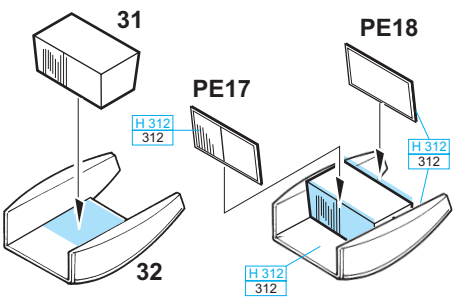
A



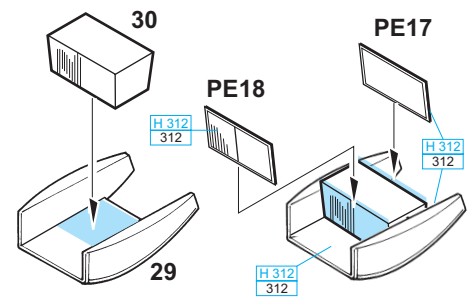
B Spitfire Mk.24 ONLY



C

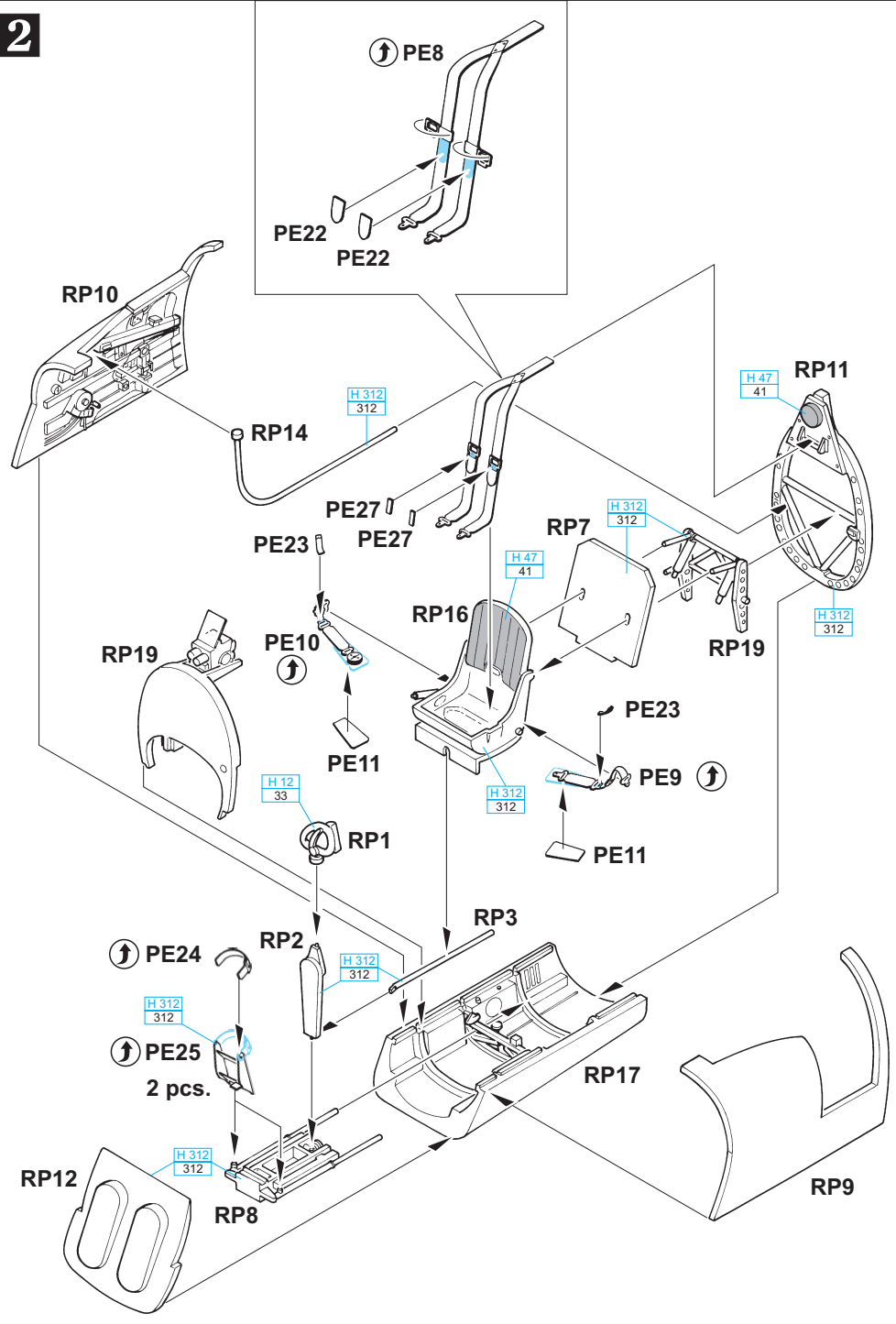


D

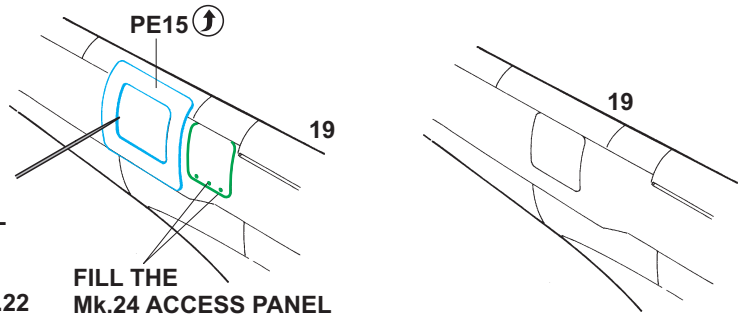


1121

2



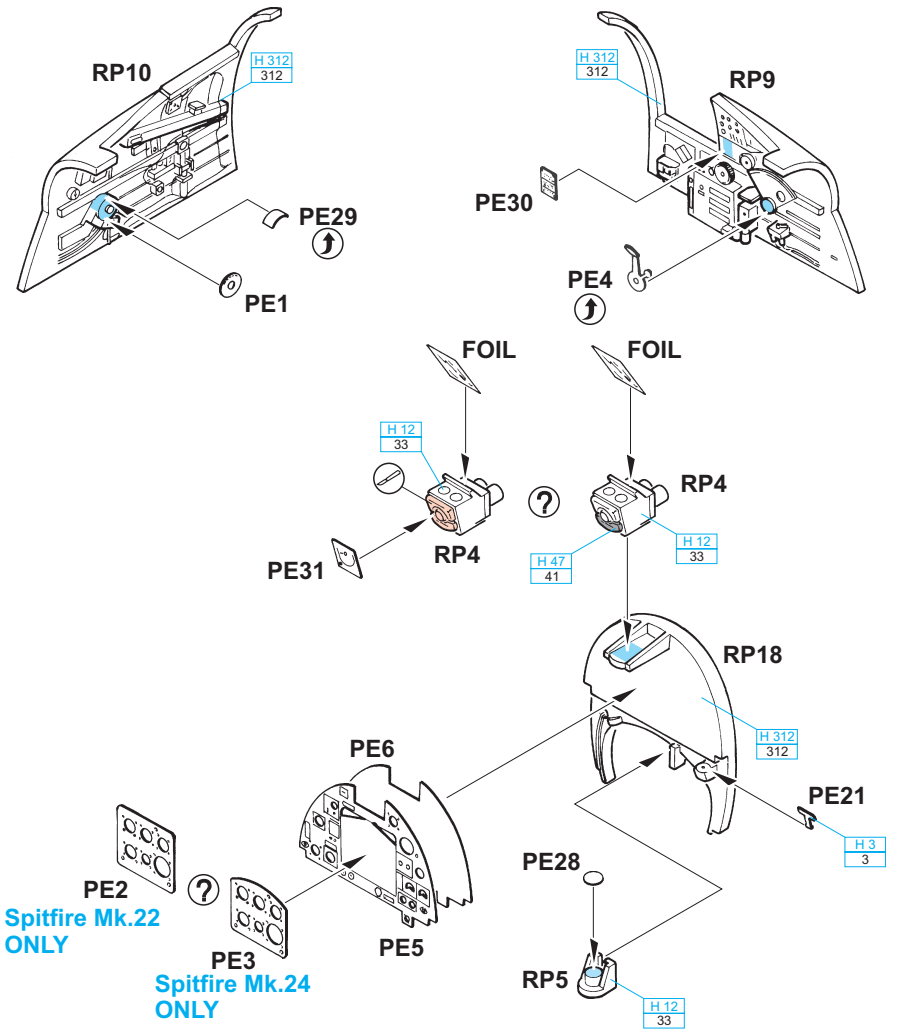
1 RESCRING TEMPLATE ONLY. DO NOT GLUE!! PŘERÝVACÍ ŠABLONA. NELEPIT!



RESCRIBE THE
ACCESS PANEL
FOR Mk.22

NARÝT PANEL
PRO VERZI Mk.22

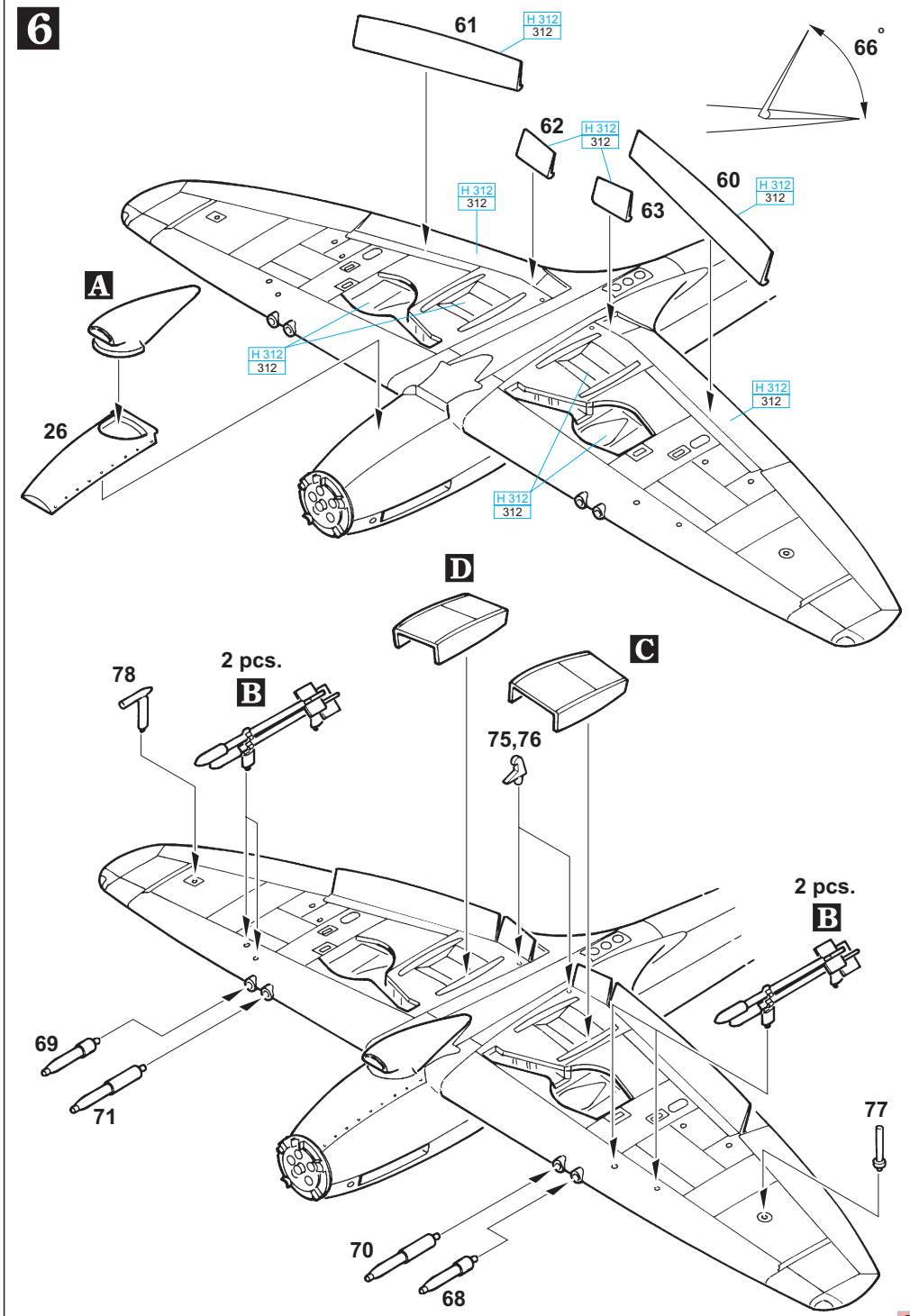
FILL THE
Mk.24 ACCESS PANEL
ZATMELIT PANEL VERZE Mk.24



PE2
Spitfire Mk.22
ONLY

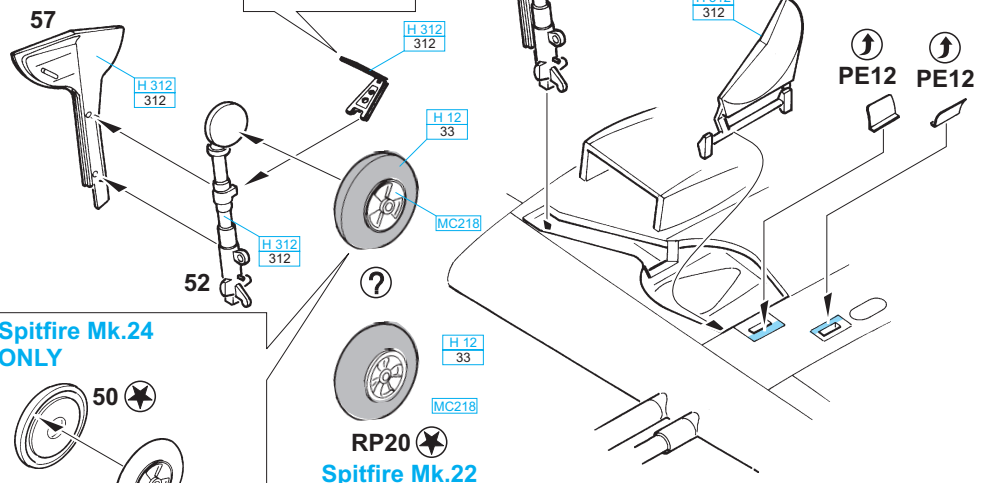
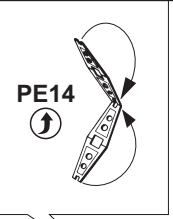
PE3
Spitfire Mk.24
ONLY

1121



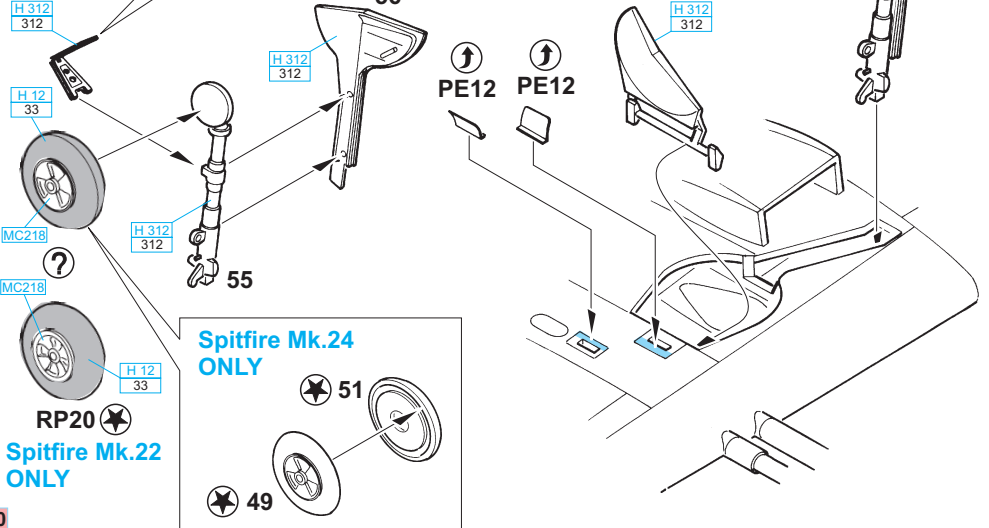
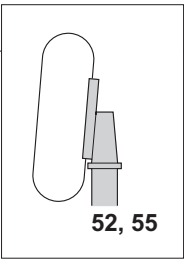
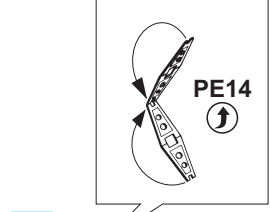
6

2 pcs. RP20
Ø - 6,5mm



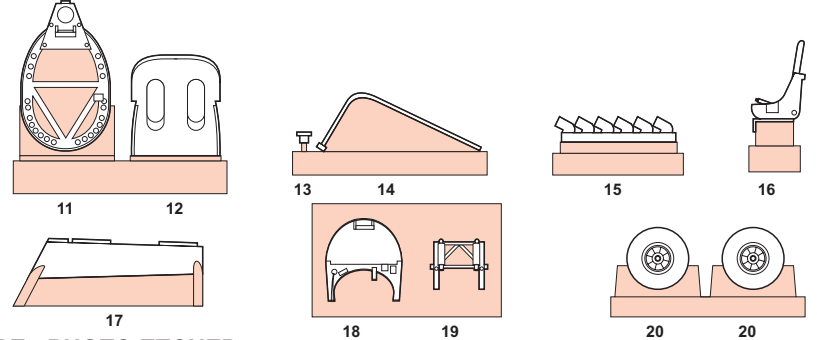
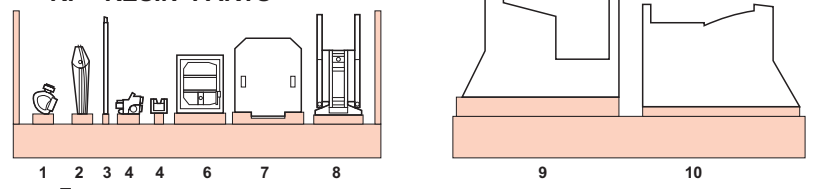
Spitfire Mk.24 ONLY
50
48

Spitfire Mk.22 ONLY
RP20

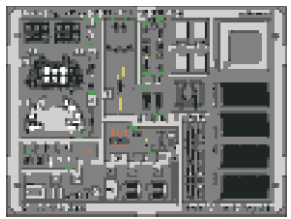


Spitfire Mk.24 ONLY
51
49

RP - RESIN PARTS



PE - PHOTO ETCHED
DETAIL PARTS



eduard
MASK

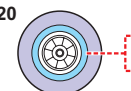


eduard
MASK

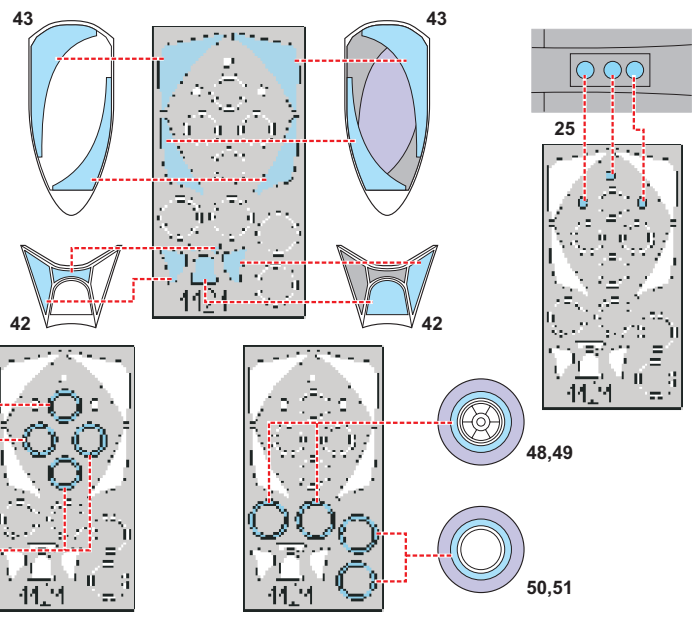
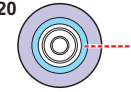
1121

LIQUID MASK

2 pcs. RP20



2 pcs. RP20



GUNZE		APPROXIMATE COLOR MATCH				
AQUEOUS	Mr.COLOR	TAMIYA	HUMBROL	REVELL	TESTORS	
H 1	1	WHITE / WEIß / BLANC / BÍLÁ	X 2	22	4	1745
H 2	2	BLACK / SCHWARZ / NOIR / ČERNÁ	X 1	21	7	1747
H 3	3	RED / ROT / ROUGE / ČERVENÁ	X 7	19	31	1590
H 4	4	YELLOW / GELB / JAUNE / ŽLUTÁ	X 8	69	12	1514
H 5	5	BLUE / BLAU / BLEU / MODRÁ	X 3	15	53	2715
H 12	33	FLAT BLACK / MATTSCHWARZ / NOIR MATT / ČERNÁ MATNÁ	XF 1	33	8	1749
H 47	41	RED BROWN / ROT BRAUN / BRUN- ROUGE / ČERVENOHNĚDÁ	XF 64	160	383	
H 71	21	MIDDLE STONE / STEINGRAU / GRIS PIERRE / ŠEDÁ	XF 60	84	88	
H 72	22	DARK EARTH / ERDFARBE / TERRE FONCÉE / ZEMITÁ HNĚDÁ	XF 52	29	87	1742
H 74	26	SKY / HIMMEL / BLEU OEUF DE CANARD / NEBESKÁ MODŘ	XF 21	23		2349
H 90	47	CLEAR RED / ROT, REIN / ROUGE TRANSPAR. / ČERVENÁ	X 27			
H 92	49	CLEAR ORANGE / ORANGE, REIN / ORANGE TRANSPAR. / ORANŽOVÁ	X 26			
H 94		CLEAR GREEN / GRÜN, REIN / VERT TRANSPAR. / ZELENÁ	X 25			
H 312	312	GREEN / GRÜN / GRIS / ŠEDÁ	FS23232		120	
H 344		RUST / ROST / ROUILLE / REZ	XF 52		113	
H 361		DARK GREEN / DUNKEL GRÜN / VERT FONCÉ / TMAVÉ ZELENÁ				
H 362		OCEAN GRAY / GRAU / GRIS / ŠEDÁ				
H 364		MEDIUM SEA GRAY / GRAU / GRIS / ŠEDÁ				
H 370		AZURE BLUE / BLAU / BLEU / MODRÁ				
Mr.METAL COLOR						
MC218		ALUMINIUM / ALUMINIUM / ALUMINIUM / HLINÍK	X 56	56	99	1781

PARTS * DÍLY * TEILE * PIÈCES

PP - PLASTIC PARTS

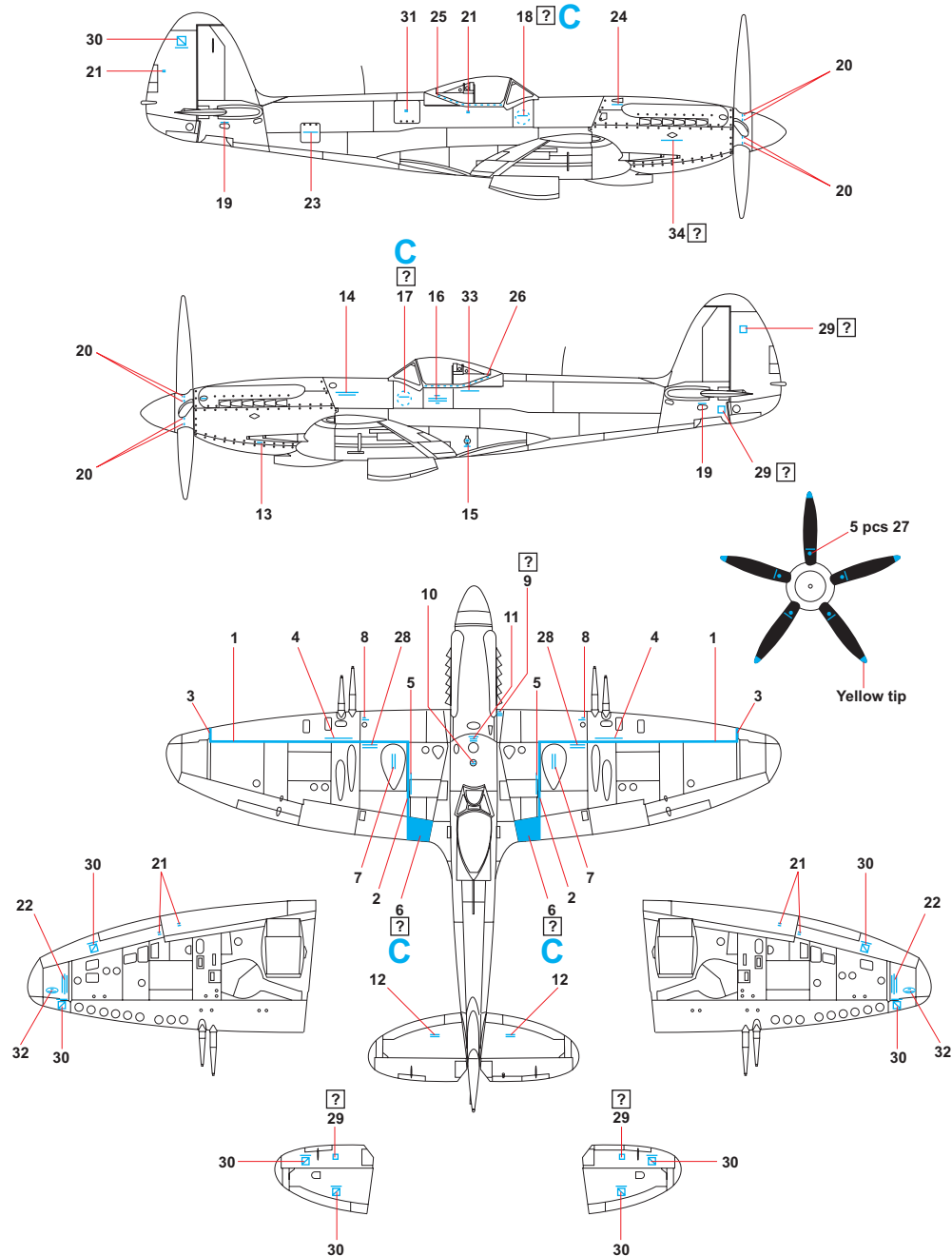
Diagram showing various plastic parts numbered 1 through 121. The parts are organized into groups: fuselage sections (1-10), wings (11-17), landing gear (18-26), propellers (27-35), fuselage details (36-47), landing gear details (48-54), fuselage details (55-63), fuselage details (64-68), fuselage details (69-74), fuselage details (75-77), fuselage details (78-86), fuselage details (87-90), fuselage details (91-94), fuselage details (95-100), fuselage details (101-103), fuselage details (104-106), fuselage details (107-110), fuselage details (111-113), fuselage details (114-116), fuselage details (117-121).

1121

8

Assembly diagram for step 8, showing the installation of the propeller and landing gear components. The diagram includes the following parts and their assembly locations:

- 42**: Propeller hub assembly, shown being inserted into the fuselage.
- 43**: Propeller, shown being attached to the hub.
- PE26**: Propeller nut, shown being inserted into the fuselage.
- PE34**: Propeller washer, shown being inserted into the fuselage.
- PE20**: Propeller pin, shown being inserted into the fuselage.
- RP13**: Spitfire Mk.24 ONLY, shown being inserted into the fuselage.
- RP6**: Propeller pin, shown being inserted into the fuselage.
- PE19**: Propeller pin, shown being inserted into the fuselage.
- 46**: Propeller pin, shown being inserted into the fuselage.
- RP15**: Propeller pin, shown being inserted into the fuselage.
- 16**: Propeller, shown being attached to the hub.
- 12**: Propeller, shown being attached to the hub.
- 13**: Propeller, shown being attached to the hub.
- 14**: Propeller, shown being attached to the hub.
- 15**: Propeller, shown being attached to the hub.
- 17**: Propeller, shown being attached to the hub.
- 47**: Propeller pin, shown being inserted into the fuselage.



Spitfire Mk.22/Mk.24

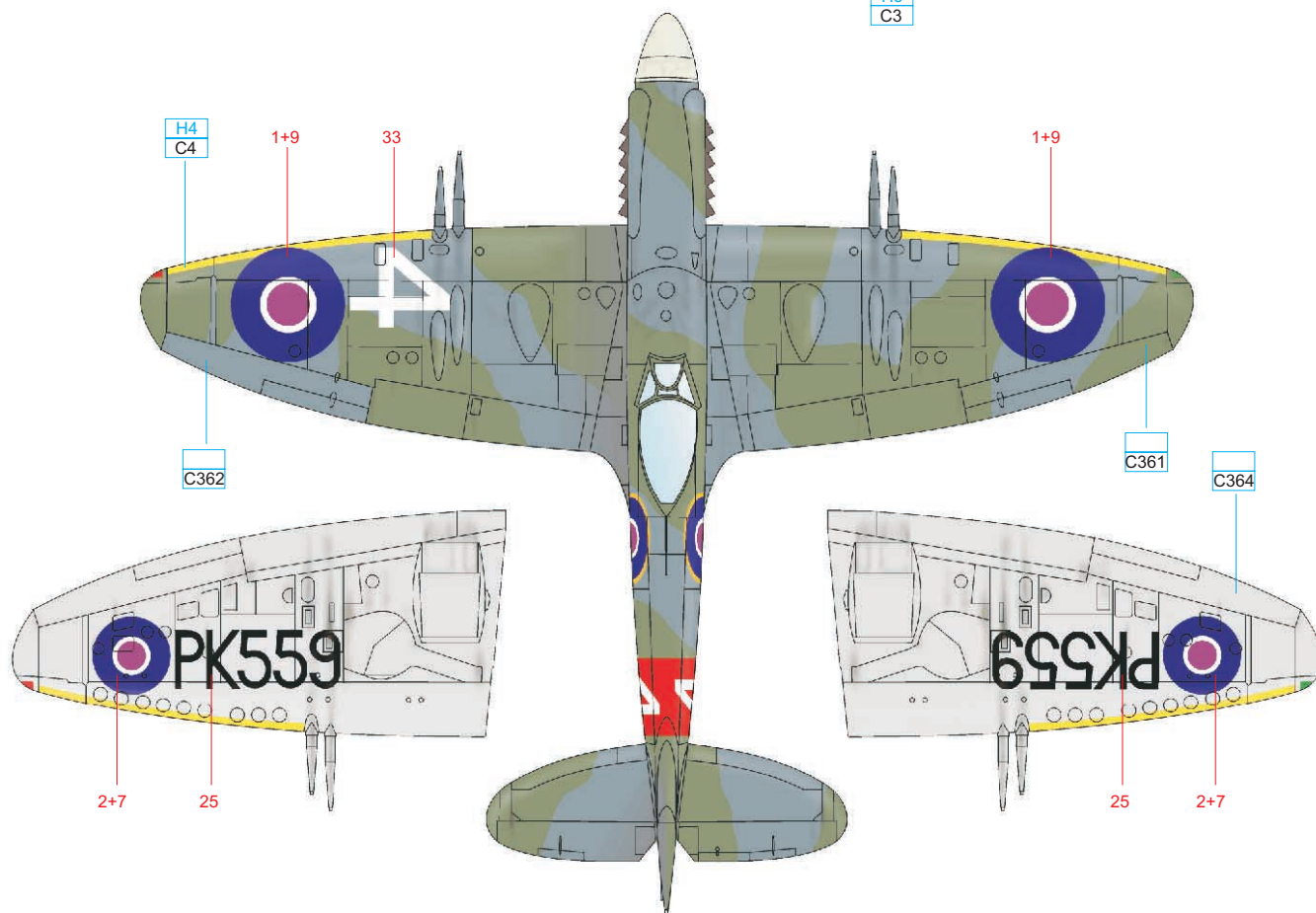
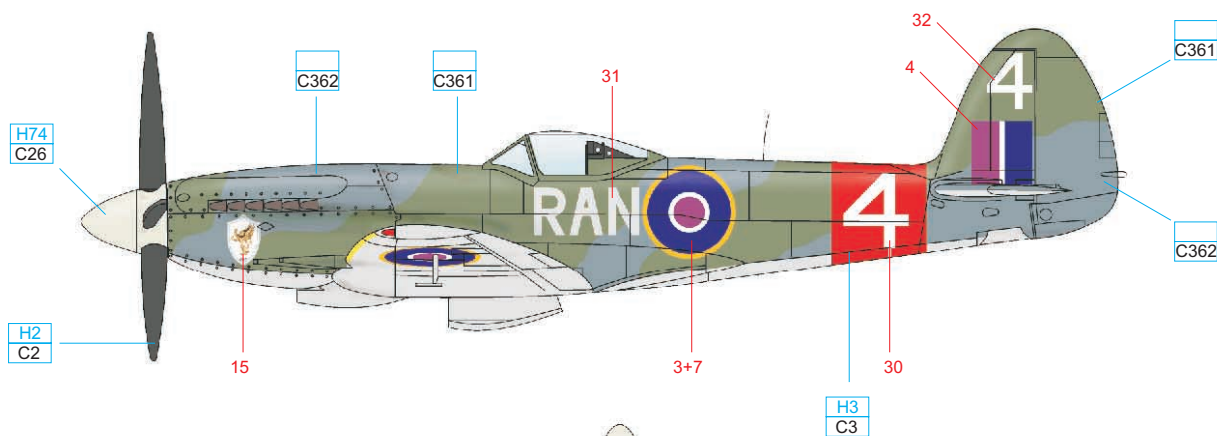
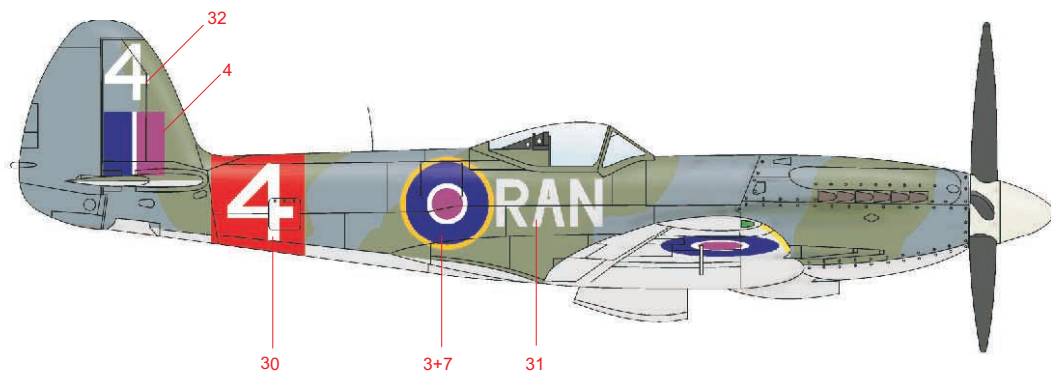
ATTENTION * UPOZORNĚNÍ * ACHTUNG * ATTENTION

- Carefully read instruction sheet before assembling. When you use glue or paint, do not use near open flame and use in well ventilated room. Keep out of reach of small children. Children must not be allowed to suck any part, or pull vinyl bag over the head.
- Před započatím stavby si pečlivě prostudujte stavební návod. Při používání barev a lepidel pracujte v dobře větrané místnosti. Lepidla ani barvy nepoužívejte v blízkosti otevřeného ohně. Model není určen malým dětem, mohlo by dojít k požití drobných dílů.
- Von dem Zusammensetzen die Bauanleitung gut durchlesen. Kleber und Farbe nicht nahe von offenem Feuer verwenden und das Fenster von Zeit zu Zeit Belüftung öffnen. Bausatz von kleinen Kindern fernhalten. Verhüten Sie, daß Kinder irgendwelche Bauteile in den Mund nehmen oder Plastiktüten über den Kopf ziehen.
- lire soigneusement la fiche d'instructions avant d'assembler. Ne pas utiliser de colle ou de peinture à proximité d'une flamme nue, et aérer la pièce de temps en temps. Garder hors de portée des enfants en bas âge. Ne pas laisser les enfants mettre en bouche ou sucer les pièces, ou passer un sachet vinyl sur la tête.
- 組み立てる前に必ず説明書をお読み下さい。接着剤や塗料をご使用する際は、窓を開けて十分な換気をおこない、火のそばでは使用しないで下さい。小さな子供の手の届かない所に必ず保管してください。部品や破片を囓んだり、なめたり、飲んだりすると大変危険です。又、部品を取り出した後のビニール袋は、小さな子供が頭から破ったりすると窒息する恐れがありますので、破り捨てして下さい。

INSTRUKTION SIGNS * INSTR. SYMBOLY * INSTRUKTION SINNBILDEN * SYMBOLES

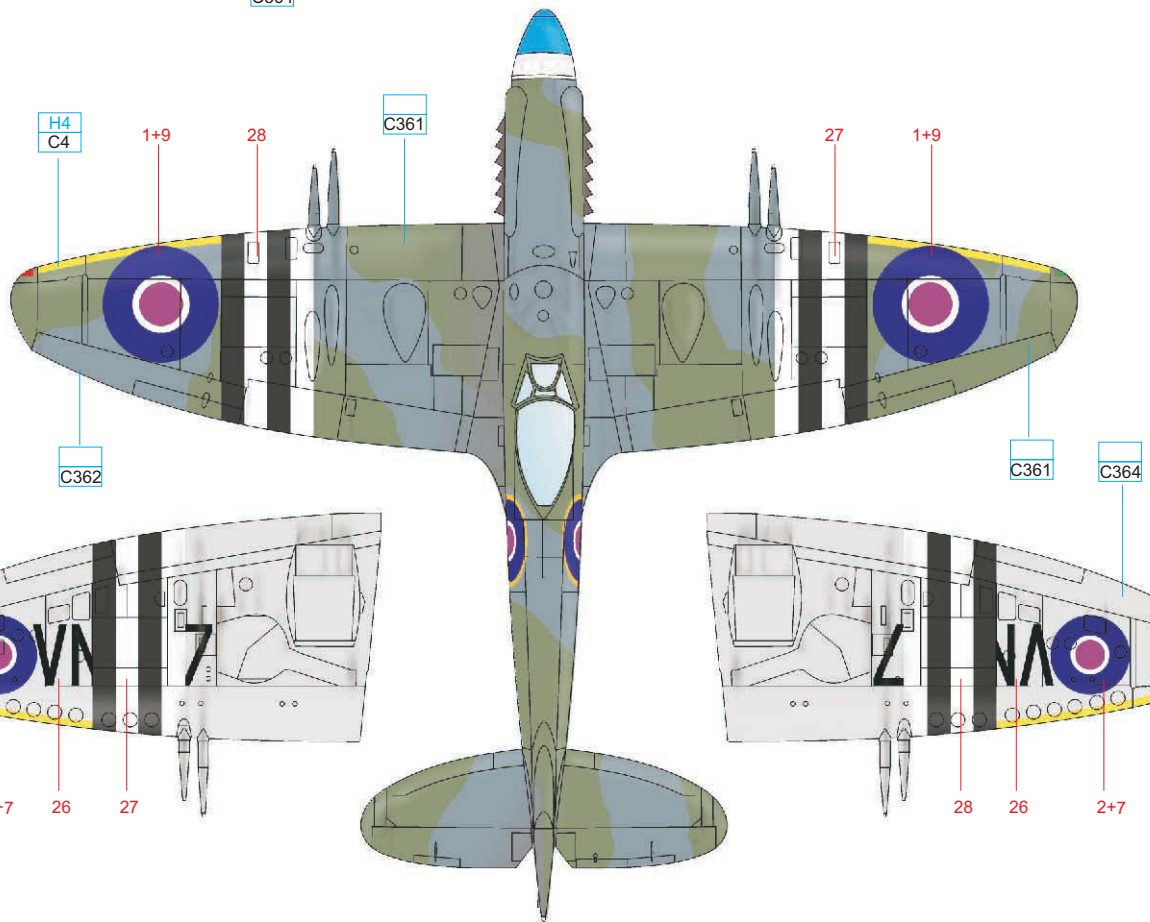
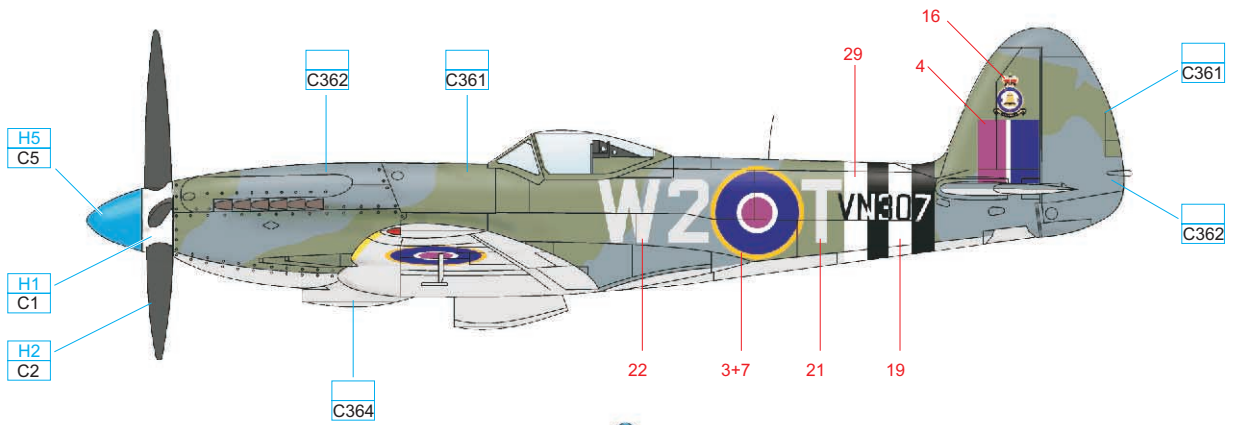
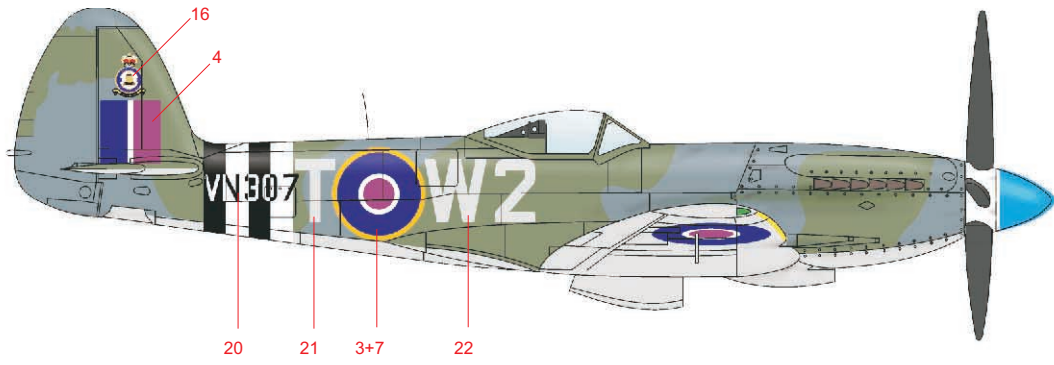
- OPTIONAL FACULTATIF NACH BELIEBEN VOLBA
- BEND PLIER SIL VOUS PLAIT BITTE BIEGEN OHNOUT
- OPEN HOLE FAIRE UN TROU OFFNEN VYVRTAT OTVOR
- SYMMETRICAL ASSEMBLY MONTAGE SYMÉTRIQUE SYMMETRISCHE AUFBAU SYMMETRICKÁ MONTÁŽ
- NOTCH L INCISION DER EINSCHNITT ZÁREZ
- REMOVE RETIRER ENTFERNEN ODRÍZNOUT
- APPLY EXPRESS MASK AND PAINT BEFORE GLUING POUŽIT EXPRESS MASK NABARVIT PŘED SLEPENÍM

Spitfire F Mk.22 (probably PK559) , No 607 (County of Durham) Squadron, RauxAF, Cooper Trophy Air Race, 1948



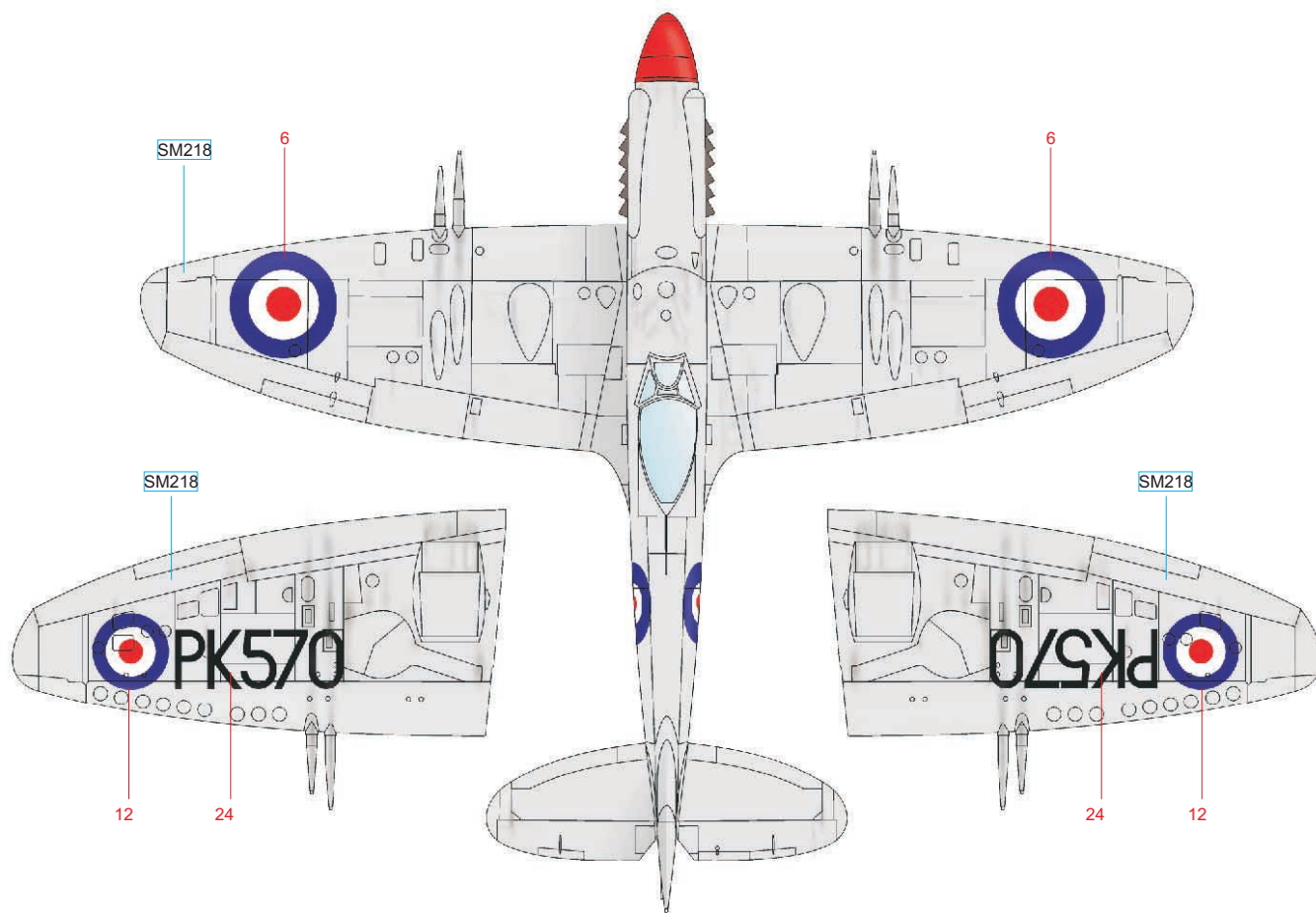
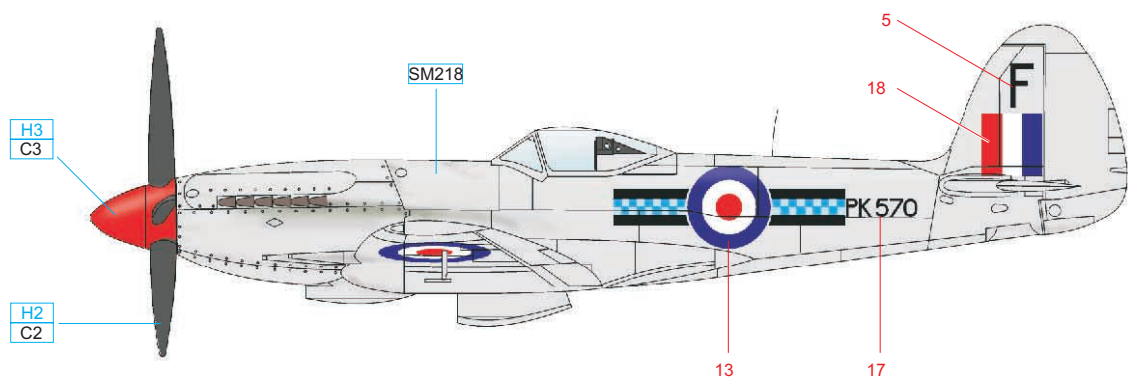
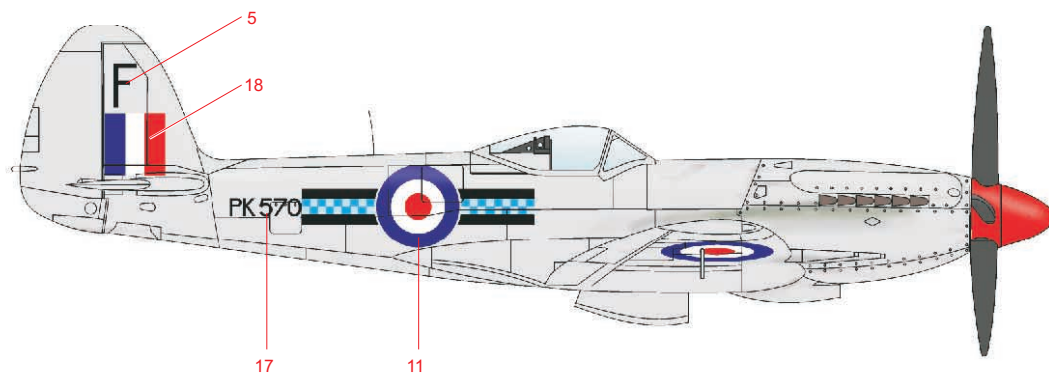
YELLOW	H4 C4	OCEAN GRAY	C362	DARK GREEN	C361	BLACK	H2 C2
RED	H3 C3	MEDIUM SEA GRAY	C364	SKY	H74 C26		

Spitfire F Mk.24 (VN307) , No 80.Squadron RAF, Kai-Tak Air Base , Hong Kong, 1950-51



YELLOW	H4 C4	OCEAN GRAY	C362	DARK GREEN	C361	BLACK	H2 C2	BLUE	H5 C5
RED	H3 C3	MEDIUM SEA GRAY	C364	SKY	H74 C26	WHITE	H1 C1		

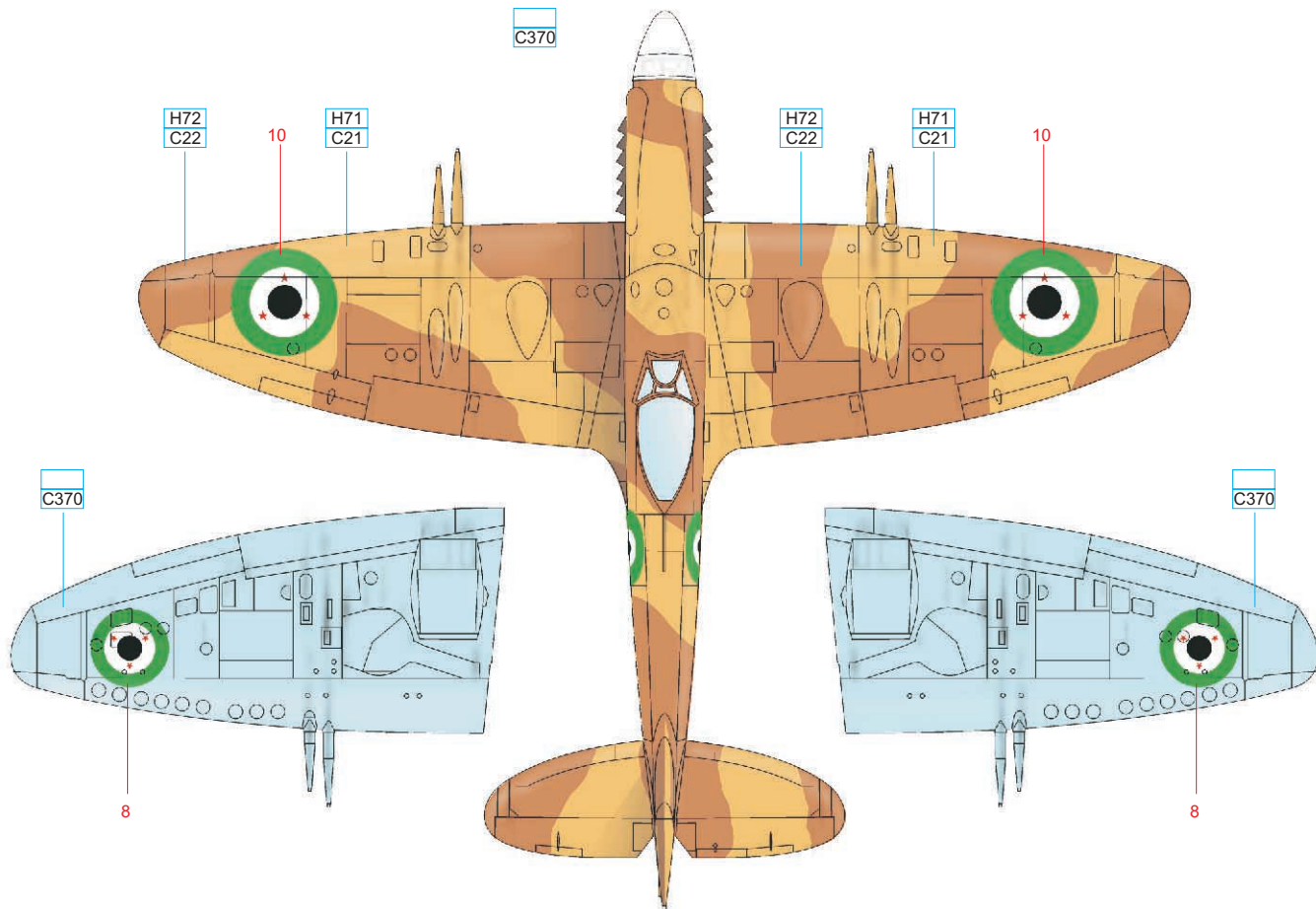
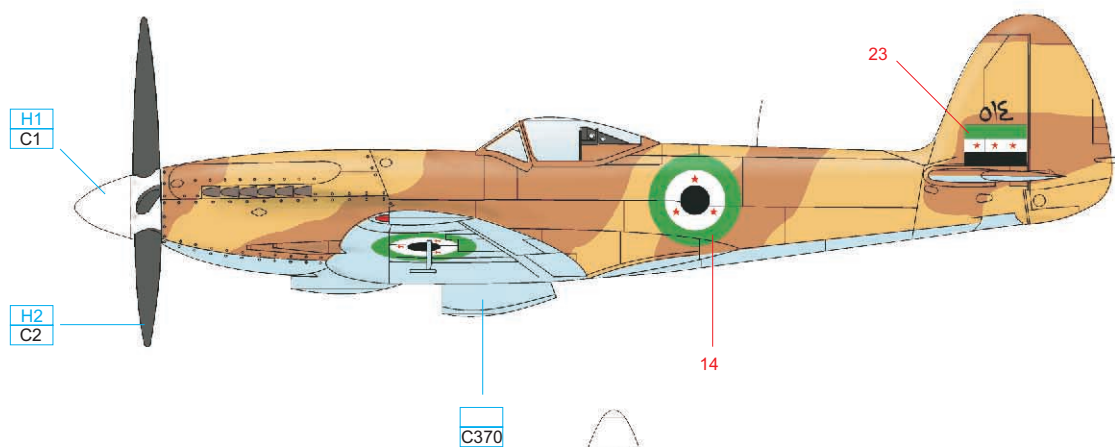
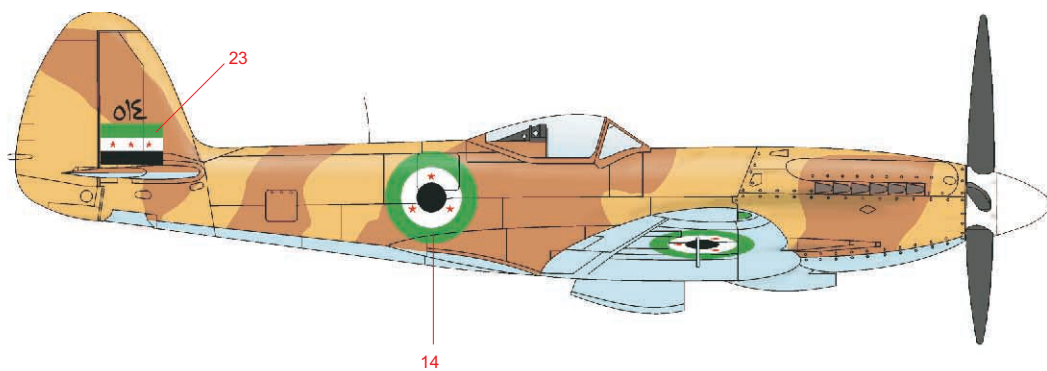
Spitfire F Mk.22 (PK570) , No 603 (City of Edinburgh)Squadron, RauxAF, Turnhouse Air Base, 1950



BLACK H2 C2 ALLUMINIUM SM218

RED H3 C3

Spitfire F Mk.22 (514) , Syrian Air Force (Al-Quwwat as-Suriya) , 1954



BLACK	H2 C2	MIDLESTONE	H71 C21	AZURE BLUE	C370
WHITE	H1 C1	DARK EARTH	H72 C22		