



Space Shuttle with Boosters

detail set for ANY Revell 1/144 Space Shuttle whole stack kit

including Launch Tower and Space Shuttle with Boosters

(cat. no 4544, 04736, 04911 and others)

<http://mek.kosmo.cz/newware>

tom.nwkits@seznam.cz

Important:

For experienced modellers 10 and over.

PE parts are marked "P". Resin parts are marked "R". Original kit parts are marked "K". Decals are marked "D".

This detail set represents Light-Weight External Tank, which was used for the most of Space Shuttle missions except STS-1, 2, 3, 4, 5, 7, 91, 95, 88, 96, 93, 103, 101, 106, 92 and following missions.

Some details of drawings in the instructions are omitted for clarity or are displayed only in certain views. Choose the best order of attaching the smaller parts to the main structures. Some of the small parts are best painted before assembly. Other parts are easier to paint after being attached to the main structures.

Decals in this kit are supplement to the Revell kit decal sheet of kits 04736 and 04911, which is generally correct. Extremely correct and detailed decals you can get from RealSpace models, we recommend them especially for owners of older issues of the Revell kit. Decals in this kit are based on RealSpace research with permission of the owner Glenn Johnson. The painting instructions in the Revell kit are generally accurate and can be used as guideline, for details study your references and **Reference Photographs**.

Reference Photographs can be found at <http://mek.kosmo.cz/newware/hw131pho.htm>.

Other recommended products:

Space Shuttle Decals in 1/144 scale, available from RealSpace Models at <http://www.realspacemodels.com/>

NWM001 1/144 Space Shuttle Airbrush Masks, available from New Ware at <http://mek.kosmo.cz/newware/index.htm>

References:

SIM #3 - Space Shuttle, available from Space In Miniature at <http://www.spaceinminiature.com/>

Space Shuttle: The History of the National Space Transportation System System by Dennis Jenkins

orientation of bending ↺ ↻ 90° angle of bending (valley)

01 Reference photograph

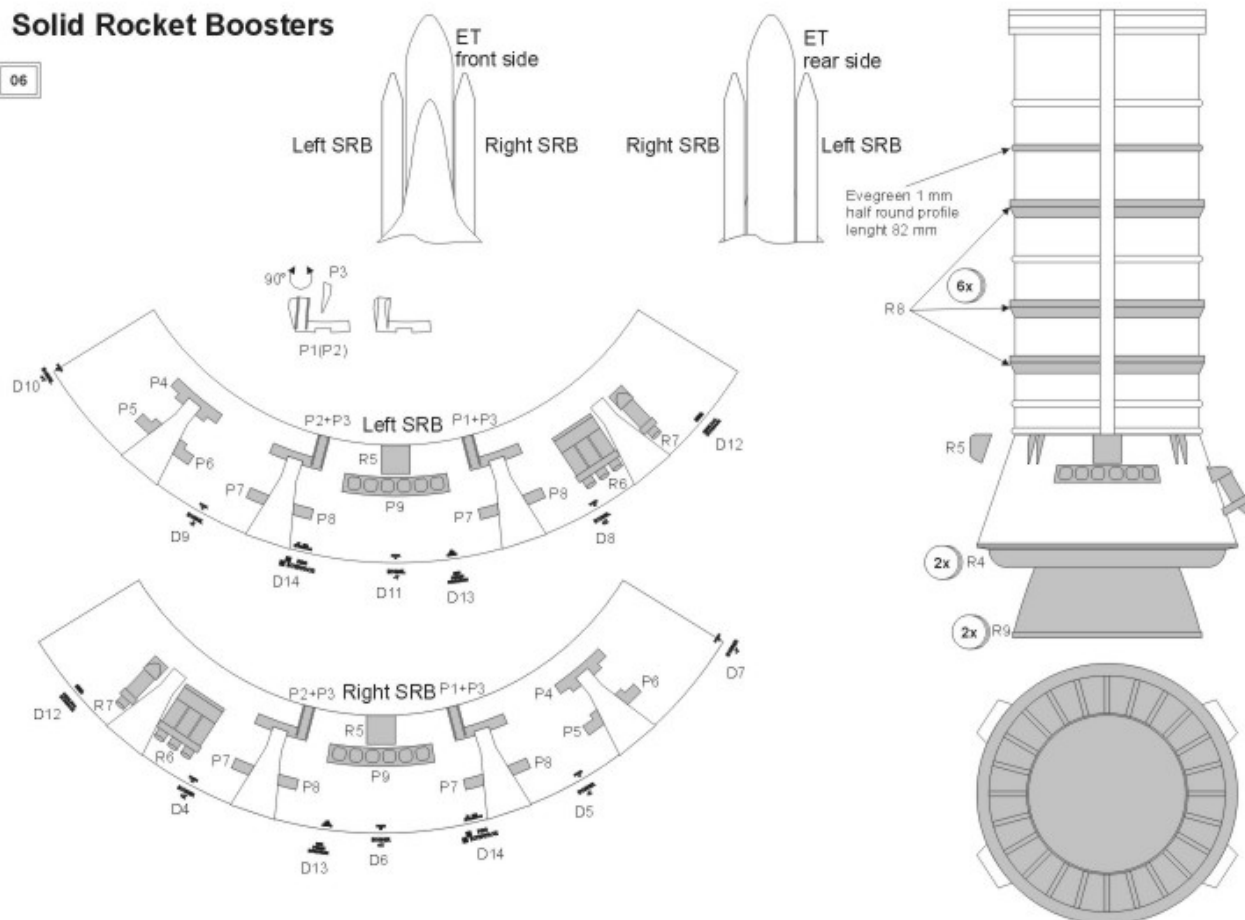
? you may choose from 2 alternate parts (usually PE or Resin)

8x Number of repeating

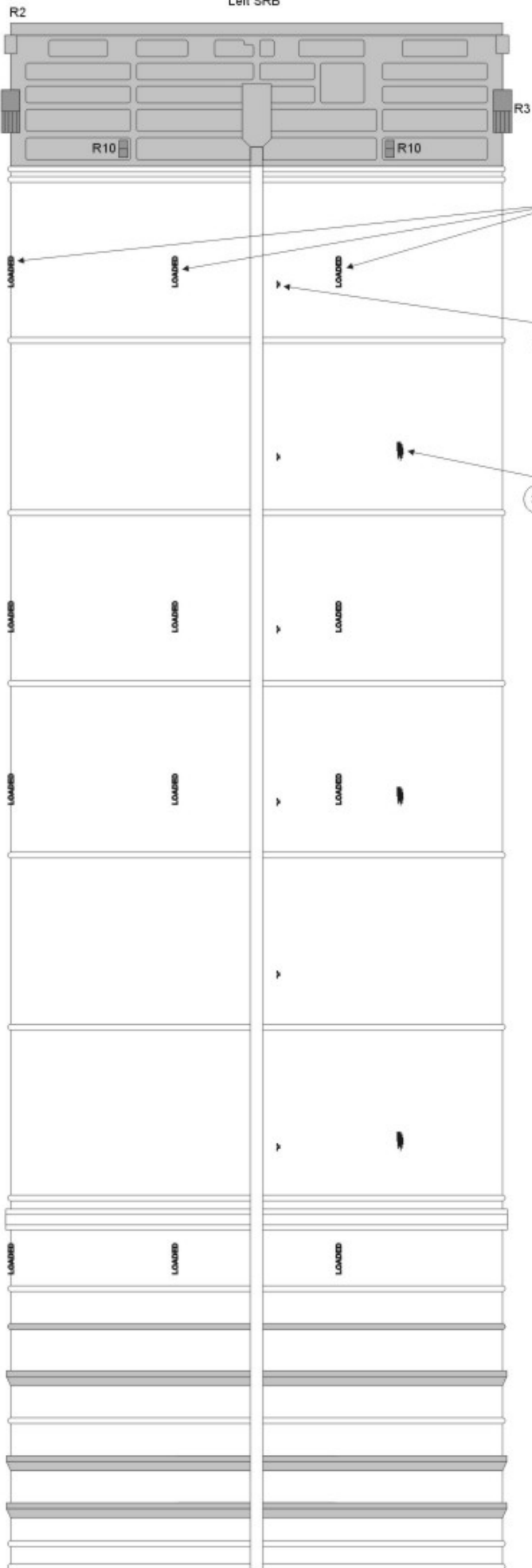
Shading used for marking New Ware parts in drawings

1 Solid Rocket Boosters

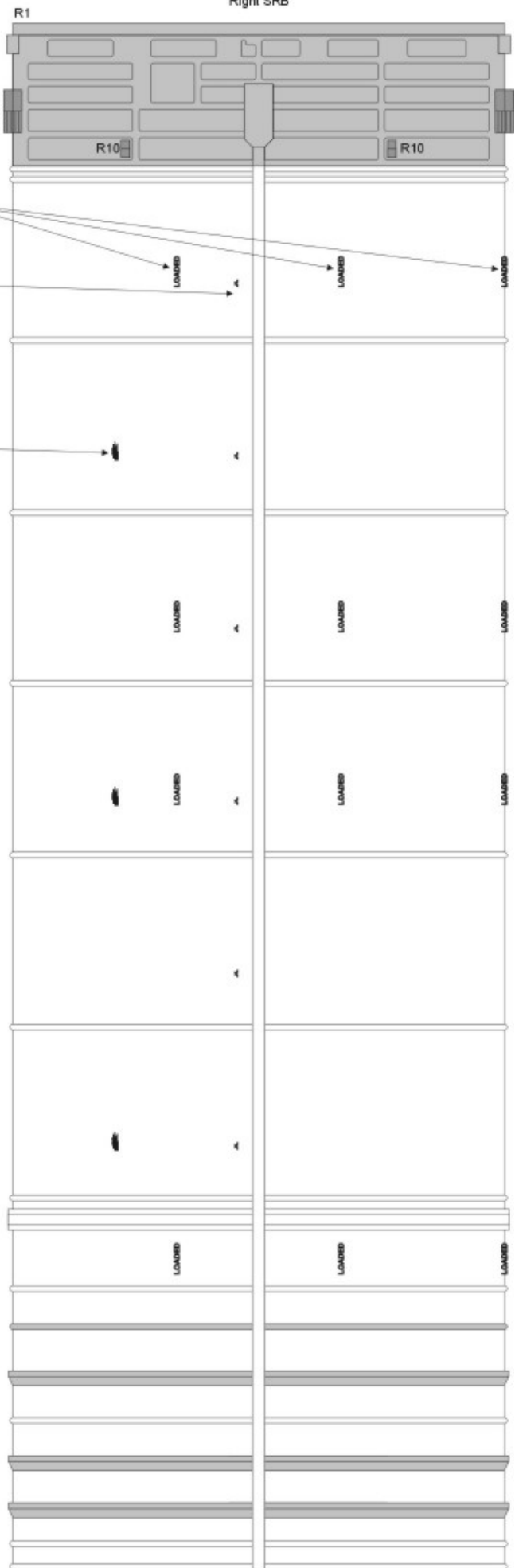
01 06



Evergreen 1 mm half round profile length 82 mm

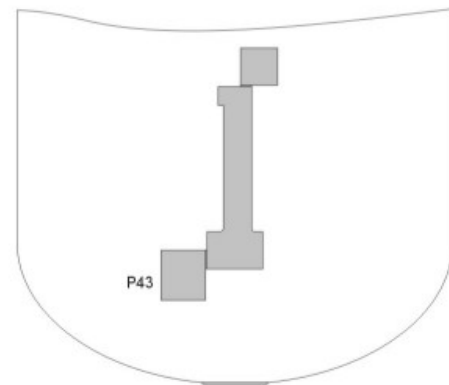
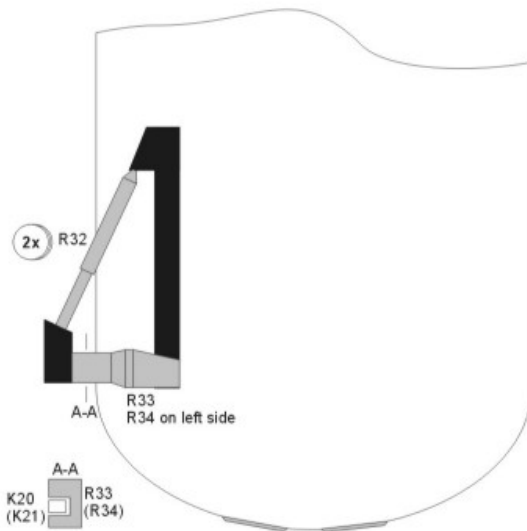
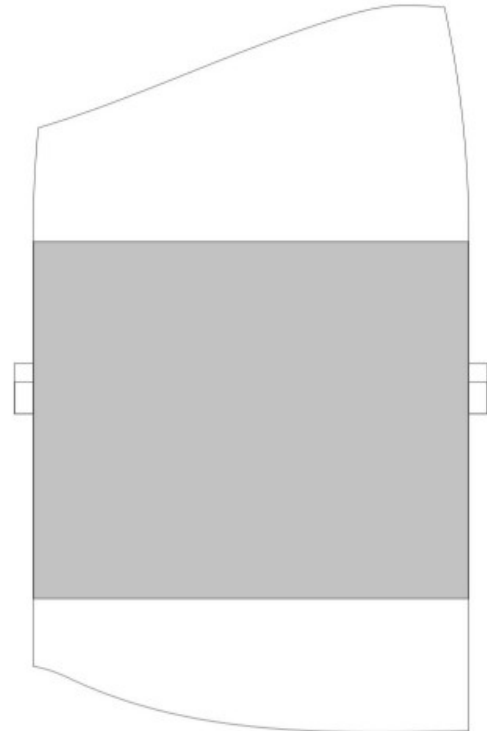
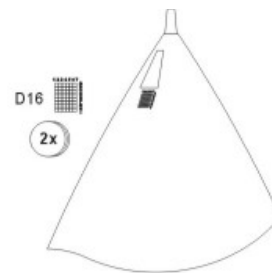
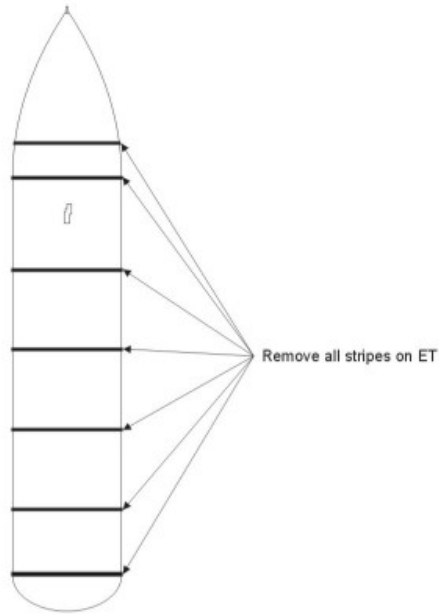


24x
D1
LOADED
6x
D2
6x
D2
3x
D3
3x
D3



2 External Tank

03 04 06

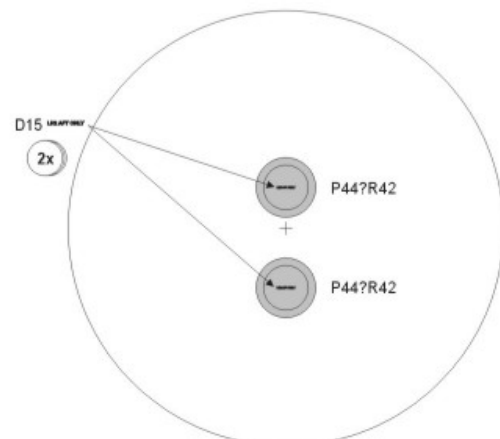


ET rear side

First glue together ET body and parts K20, K21 and K23.

Next remove corresponding portions of K20 and K21 parts and replace them by parts R32.

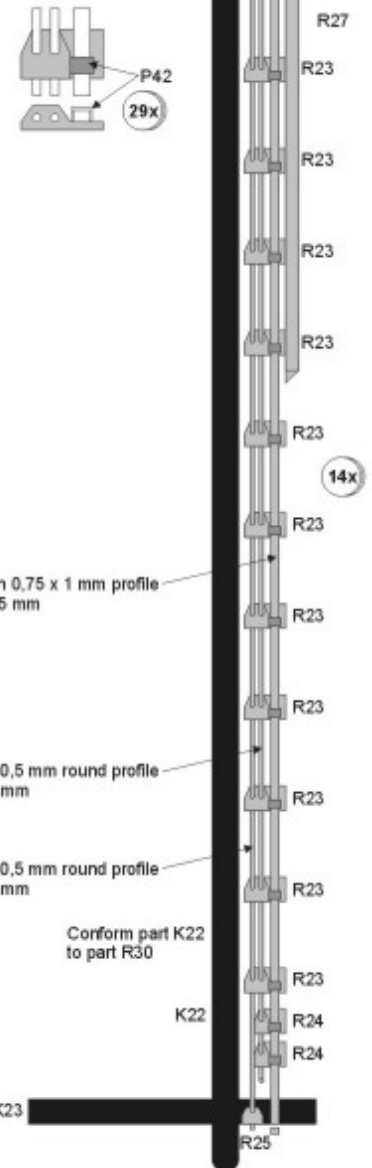
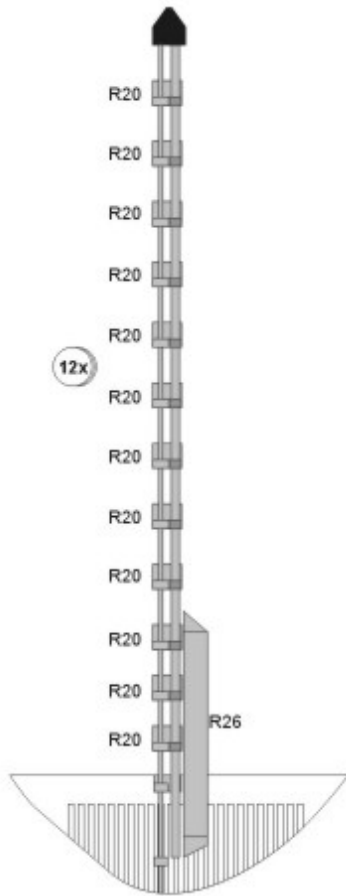
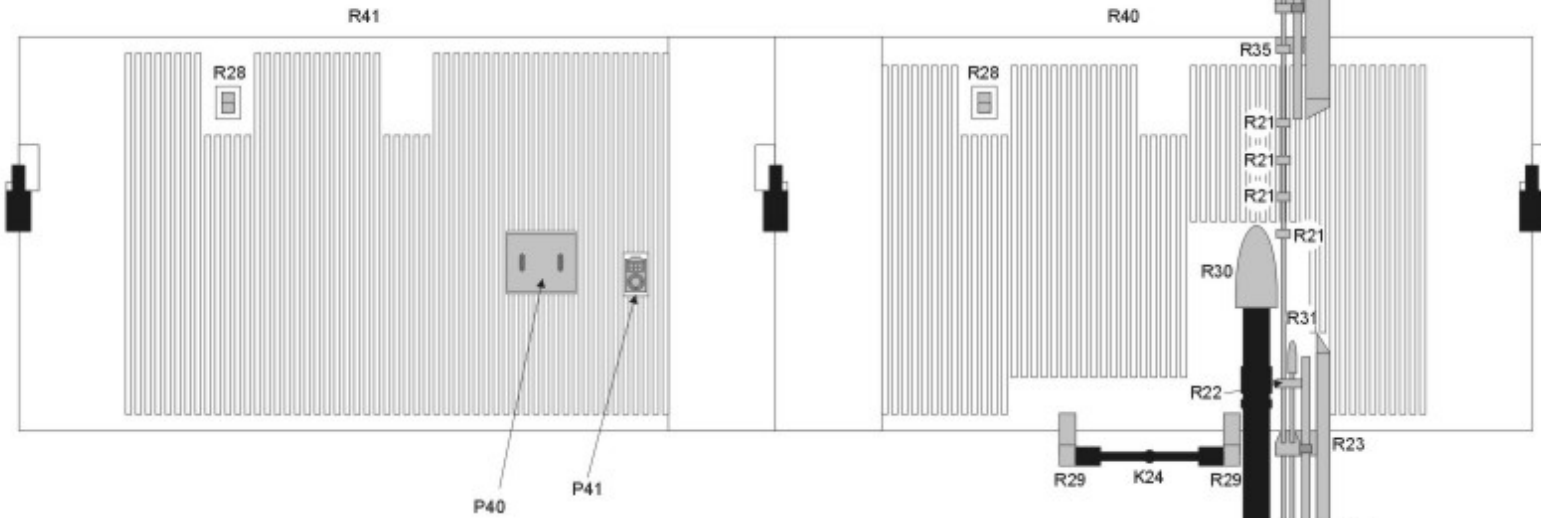
Finally attach parts R33 and R34 on parts K20 and K21.



If using parts R42 apply putty to fill gap between penphery and ET body

ET rear side

ET front side

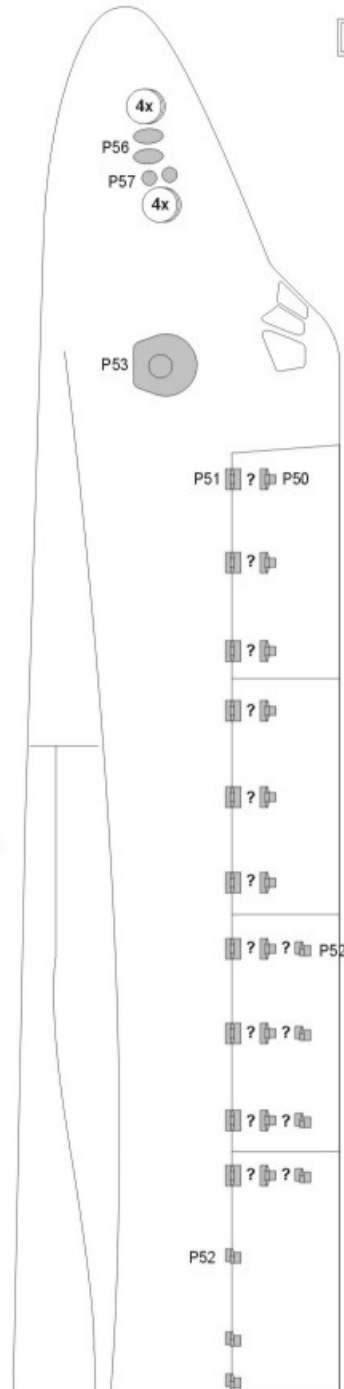
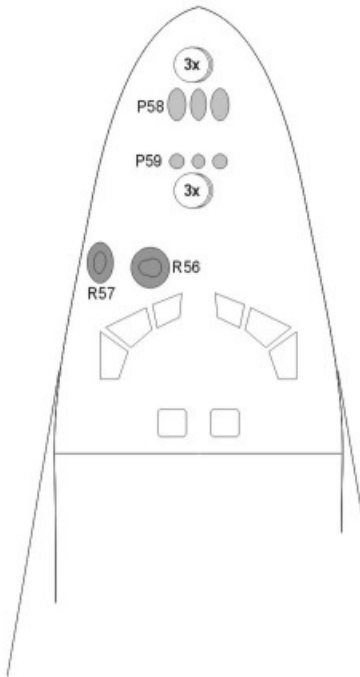


Put on the evergreen 0,5 mm round profiles parts R20, R21, R22, R23, R24, R25 and R35 without bonding.

Attach some of them in correct position to the ET body.

Attach one by one resin parts to the ET body.

Attach 0,75 x 1 mm profile with applied P42 parts.



A - Discovery, Atlantis, Endeavour
 B - Columbia since 1989
 C - Challenger, Columbia 1981-1986

	A	B	C
P51			
?			
?			
?			
?			
?			
?			
?			
?			
?			
P52			

