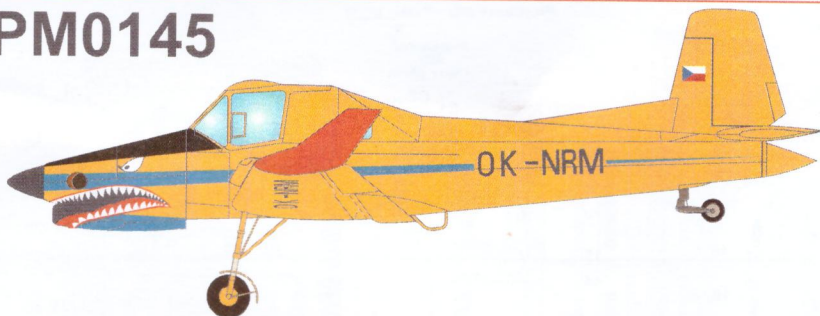


# KPM0145



## LET Z-37T Agro Turbo

### LET Z-37T Agro Turbo

První let uskutečnil prototyp stroje 6.zář 1981. Následně byl stroj od dubna zkoušen VZLÚ, jeho pilotem byl pro první zálet Ing. Pospíšil. V letech 1997 až 1999 byl Z-37T provozován VZLÚ pro leteckou protipožární službu.

Produkce stroje již nepokračuje, celkem bylo vyrobeno 51 letadel. Stroj vyšel ze svého předchůdce Let Z-37 Čmelák, který byl vybaven pístovým motorem.

Verze:

XZ-37T prototyp s motorem Walter M-601B

Z-37T Agro Turbo sériová verze s motorem M-601Z

Z-37T-2 dvoumístná cvičná verze

Z-137T - vývojová verze

### LET Z-37T Agro Turbo

The Zlin Z 37T Agro-Turbo is a single-engine single-seat agricultural aircraft produced by the Czechoslovak resp. Czech manufacturer Moravan Otrokovice (today ZLIN Aircraft Otrokovice, Czech Republic). The Z 137T is a further development with a more powerful engine of the same type.

The Z 37T is a development of Let Z-37 Čmelak with turboprop engine. A passenger seat for a mechanic or for a student is available.

#### TECHNICKÁ DATA/TECHNICAL DATA:

Posádka/Crew:	1
Motor/Powerplant:	1x Walter M-601Z
Výkon/Power:	360 kW (490 k)
Rozpětí/Wingspan:	13,63 m
Délka/Length:	10,46 m
Výška/Height:	3,51 m
Nosná plocha/Wing area:	23,8 m <sup>2</sup>
Hmotnost prázdná/Empty weight:	1250 kg
Hmotnost vzletová/Takeoff weight:	2525 kg
Dostup/Climb:	5500 m
Dolet/Radius:	641 km
Max. rychlost/Max. speed:	285 km/h

#### POUŽITÉ PODKLADY / REFERENCES USED:

Wikipedie Z-37T  
Z-37 monografie, L+K  
Československá letadla 2, Václav Němeček  
osobní archiv/personal files

#### REALIZAČNÍ TÝM / REALISATION TEAM:

Předlohový model:	Petr Muzikant
Master model:	
Formy a výroba:	Jiří Válek
Moulds and production:	
Titulní kresba:	Zdenek Macháček
Boxart:	
Návod:	Jarda Š
Instructions:	
Grafika a návrh obtisků:	Jan Polc
Graphic design, decals:	
Tisk obtisků:	
Decal printer:	KP
Konzultanti:	
Consultants:	Slavomír Goldemund Miroslav Baľous Václav Šorel Jaroslav Velc Michal Ovcáčík Petr Šafra Pavel Šipka



VOLITELNĚ  
OPTIONAL



VYVRTAT  
DRILL HOLE



TMEL  
PUTTY



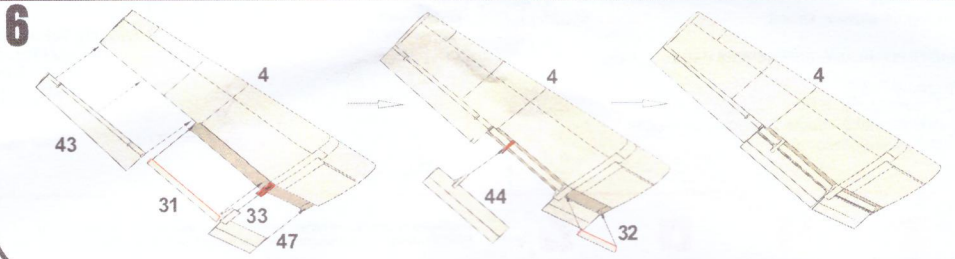
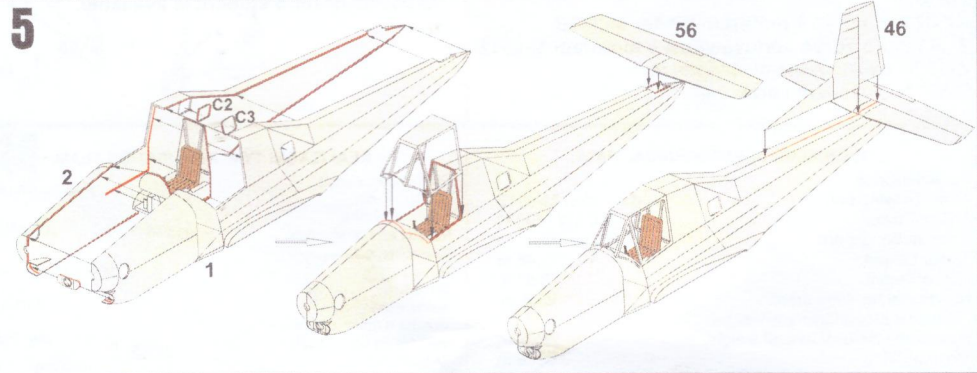
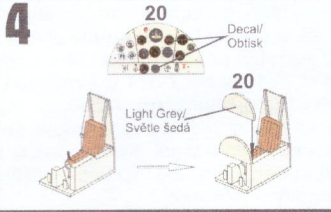
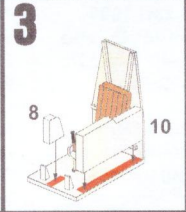
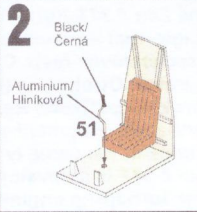
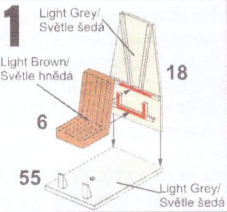
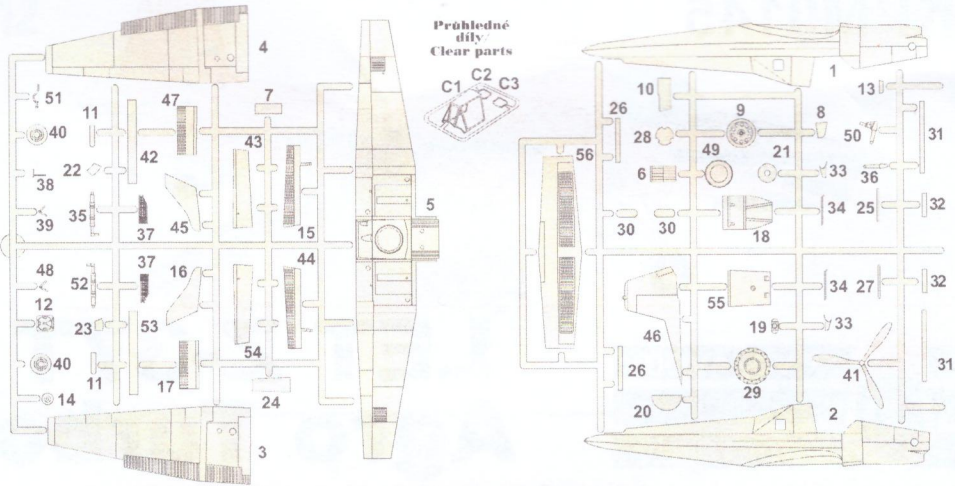
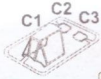
ODSTRANIT  
REMOVE

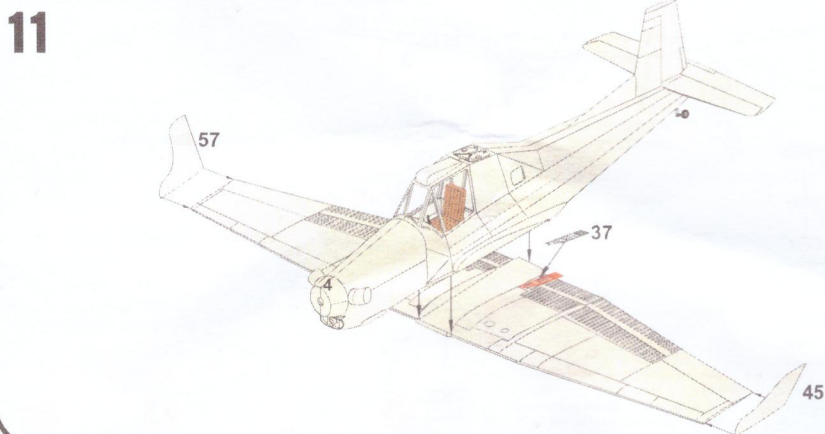
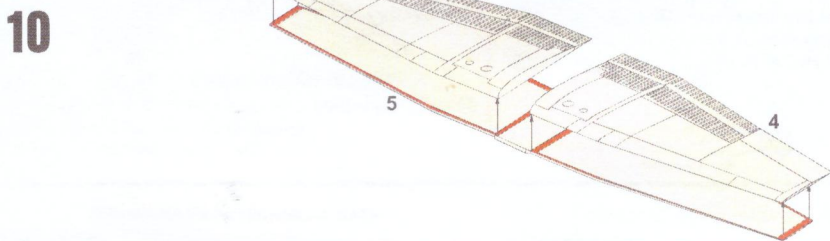
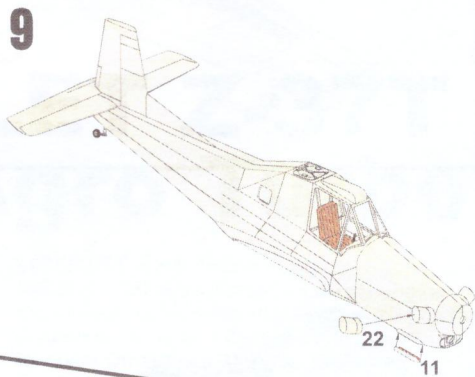
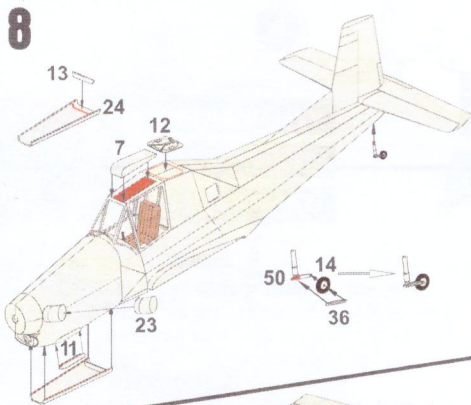
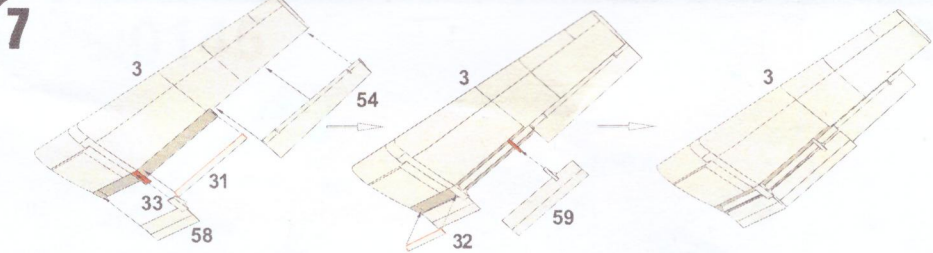
Používejte pouze vhodné nářadí, lepidlo a barvy. Během práce nejezte a nepijte.  
POZOR - obsahuje malé součásti, které mohou mít ostré hrany. Není vhodné pro děti.

Use proper tools, glue and paints. Do not eat and drink during the work.  
WARNING - contains small parts with possible sharp edges. Not suitable for children.

Plastikové díly - Plastic parts

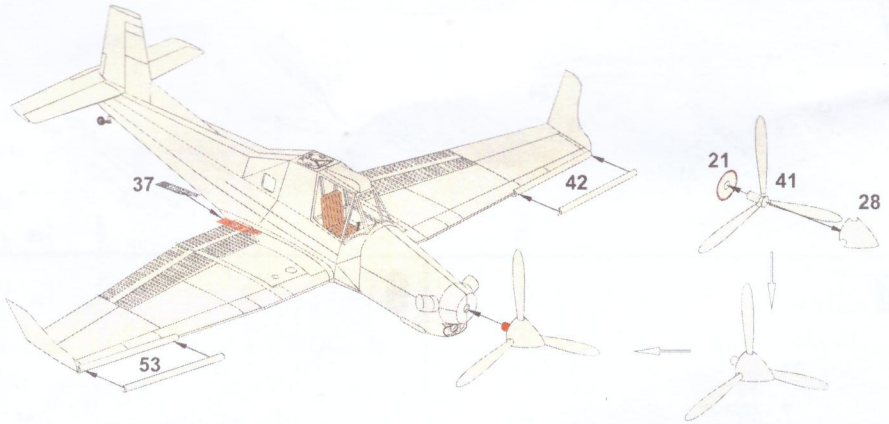
Průhledné díly  
Clear parts



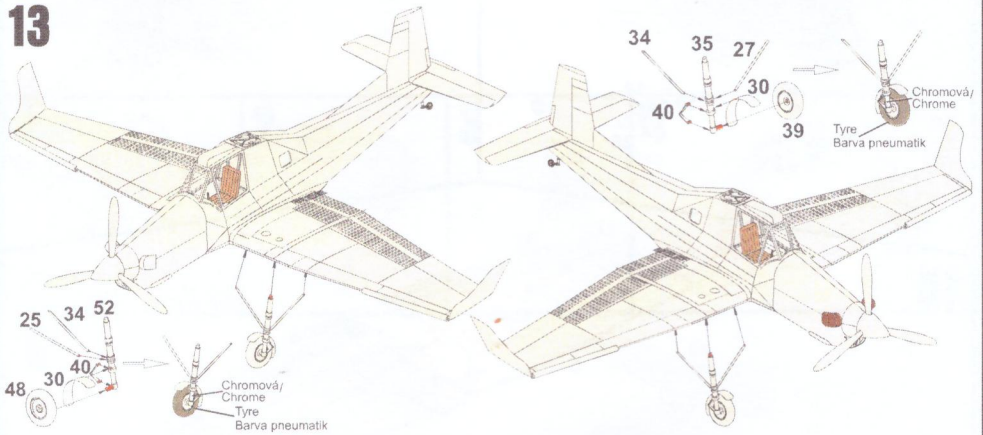




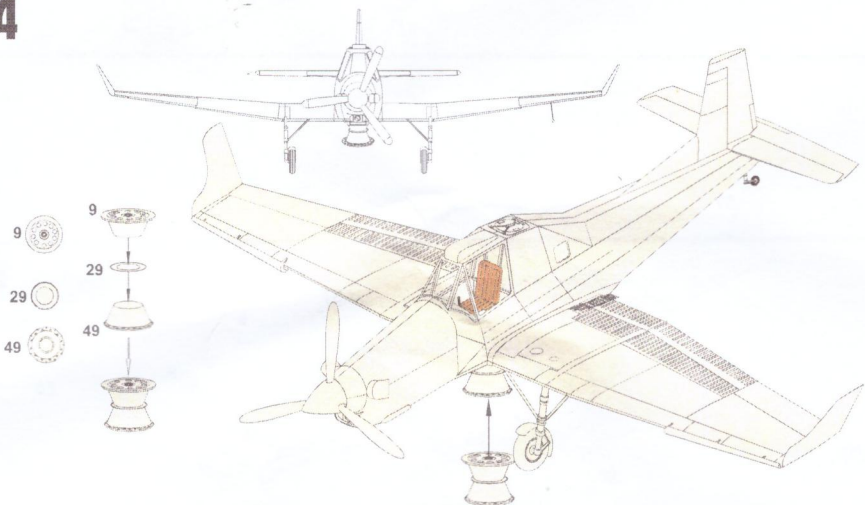
# 12

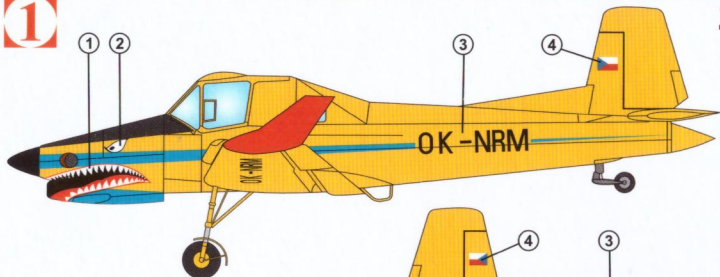


# 13



# 14

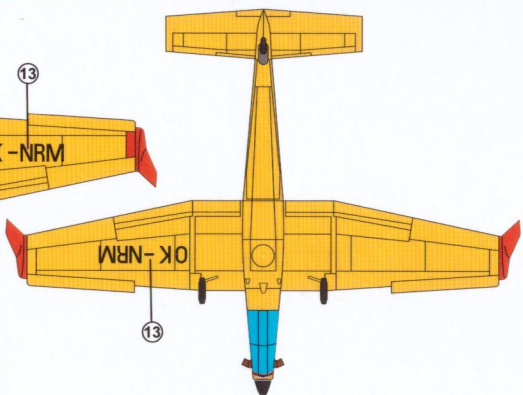
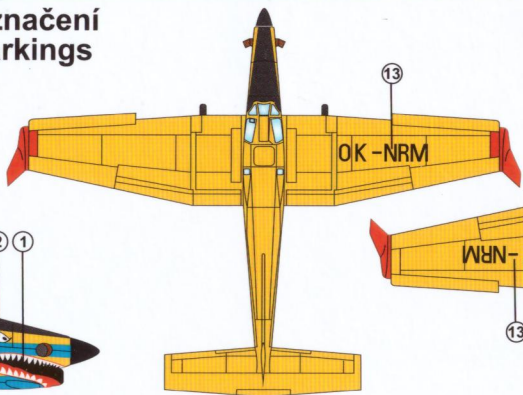
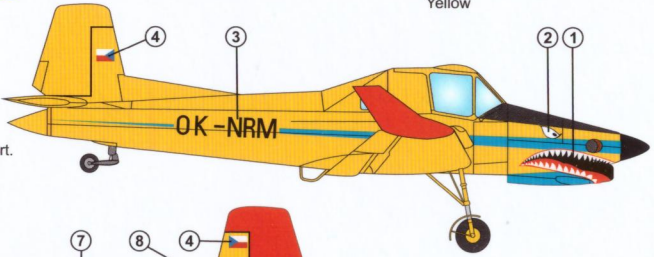
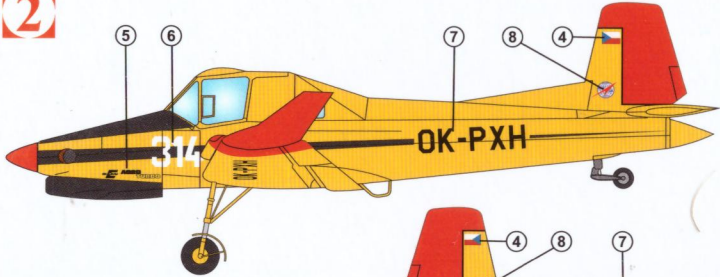


**1**

## Zbarvení & Označení Colours & Markings

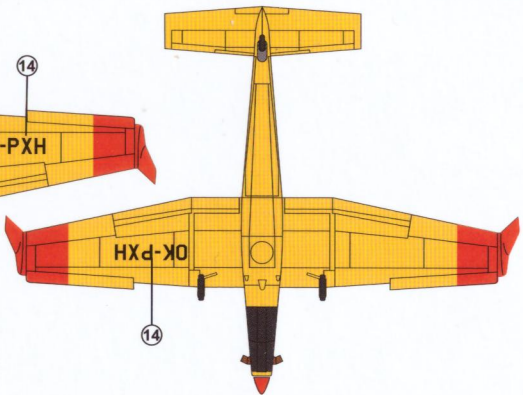
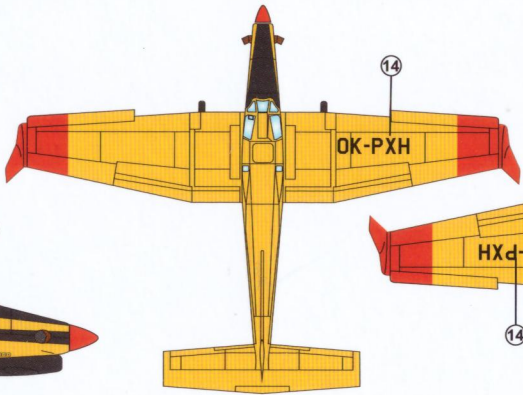
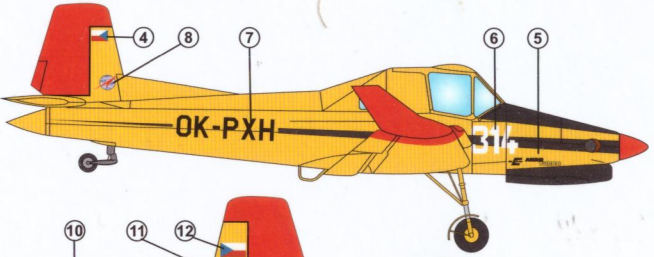
188 66  
Žlutá  
Yellow

LET Z-37T, OK-NRM, Agro Air, letiště Hradec Králové. Letoun se zajímavou kresbou žraločí tlamy.  
LET Z-37T, OK-NRM, Agro Air, Hradec Kralove airport. Aircraft with sharkmouth painting.

**2**

33 07  
Černá  
Black

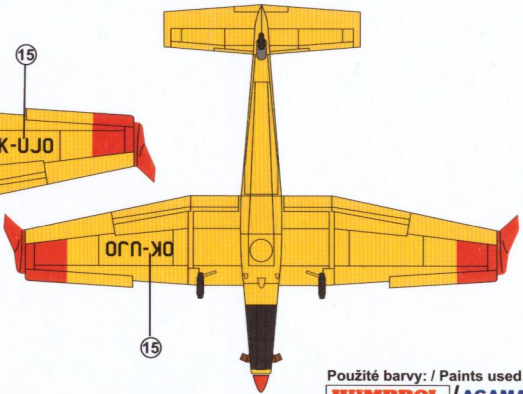
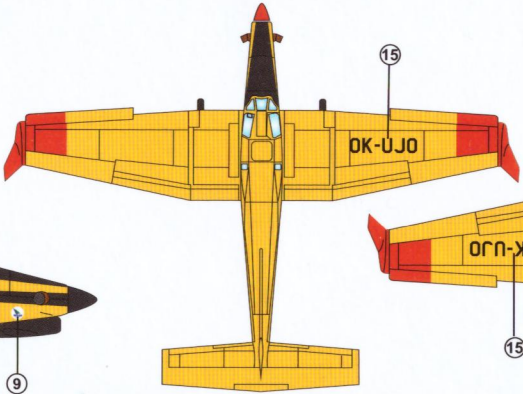
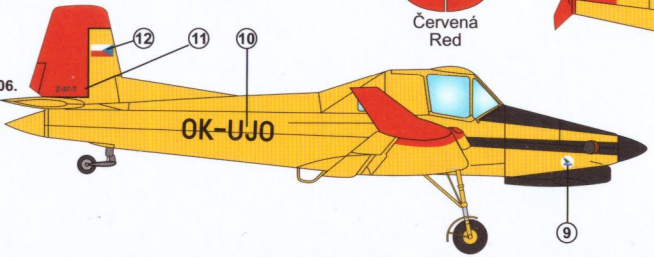
LET Z-37T, OK-PXH, aerosalon Le Bourget, Francie, 1985.  
LET Z-37T, OK-PXH, Le Bourget (France) aerosalon, 1985

**3**

113 54  
Rez (výfuky)  
Rust (exhausts)

19 17  
Červená  
Red

LET Z-37T, OK-UJO, letiště Plasy, Česká republika, 2006.  
LET Z-37T, OK-UJO, Plasy airfield, Czech republic, 2006.



Použité barvy: / Paints used:  
**HUMBROL / AGAMA**