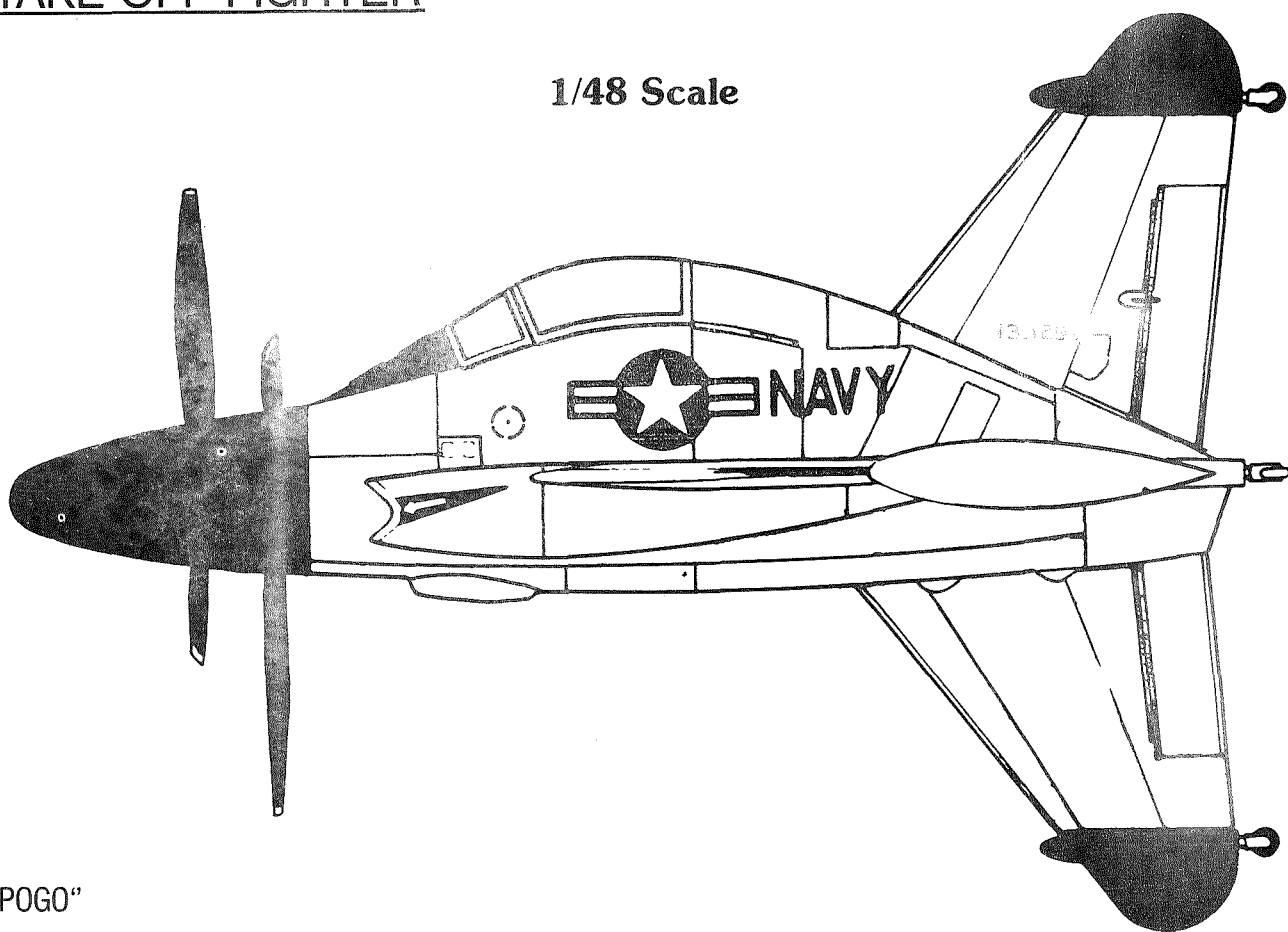


Convair XFY-1 VTO

NO. 536

VERTICAL TAKE-OFF FIGHTER

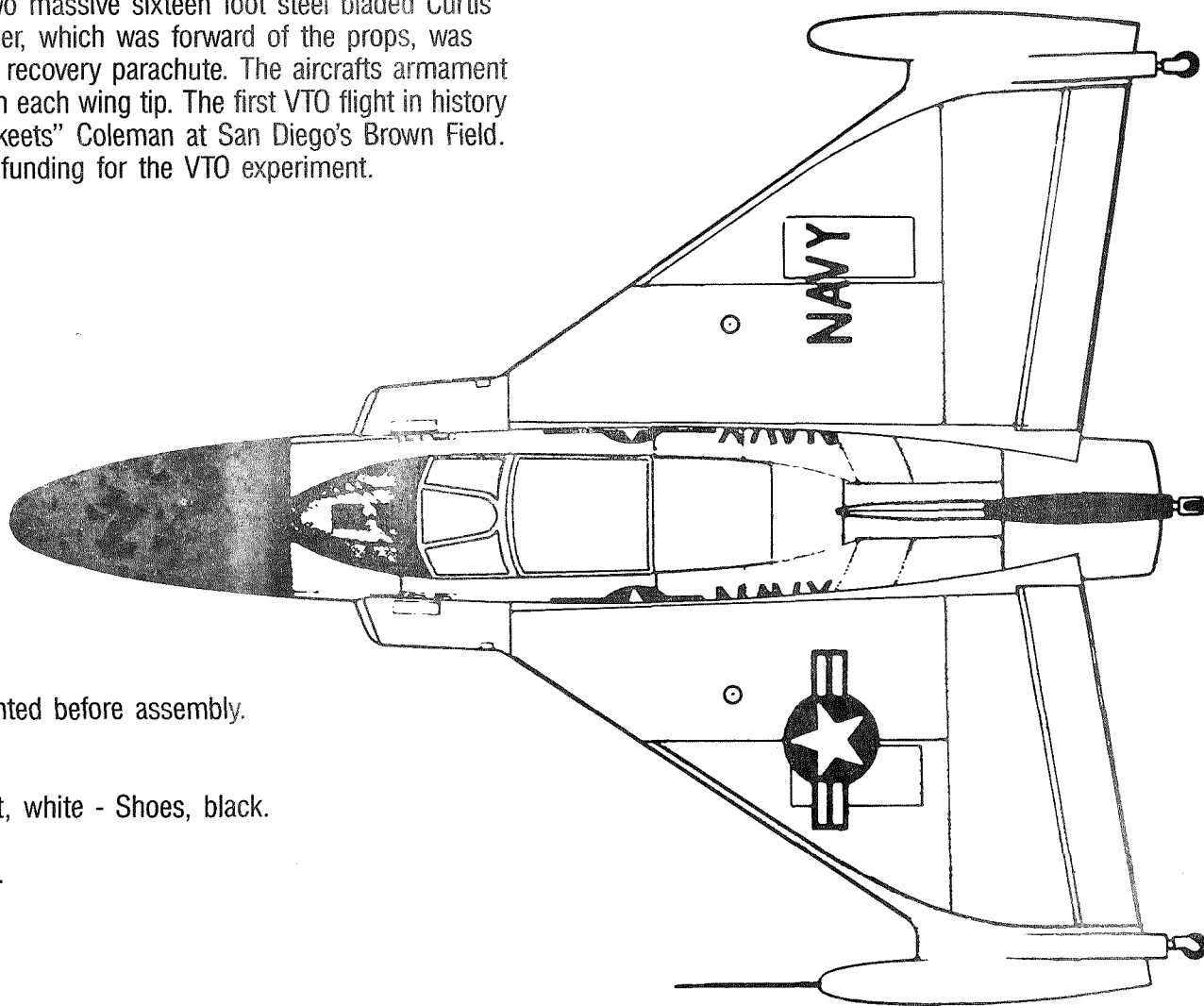
1/48 Scale



NO. 536 CONVAIR XFY-1 VTO "POGO"

In 1951 Convair was awarded a contract by the Navy to manufacture a most unusual aircraft, a VTOL capable of taking off and landing on its tail.

"POGO" was a fairly small aircraft with a wingspan of 27 feet 7³/₄ inches and a total wing area of 355 square feet. Its overall length was 34 feet 11³/₄ inches. Its empty weight was 11,742 pounds and combat loaded weight was 16,250 pounds. The XFY-1 had two massive sixteen foot steel bladed Curtis three bladed props. A huge spinner, which was forward of the props, was hollow and housed an emergency recovery parachute. The aircraft's armament consisted of two 20mm cannons in each wing tip. The first VTO flight in history was on November 4, 1954 by "Skeets" Coleman at San Diego's Brown Field. In 1956 the Navy terminated the funding for the VTO experiment.



NOTE: Some parts should be painted before assembly.

Color recommendations:

Pilot - Suit, tan or khaki - Helmet, white - Shoes, black.

Pilot seat - Green or silver.

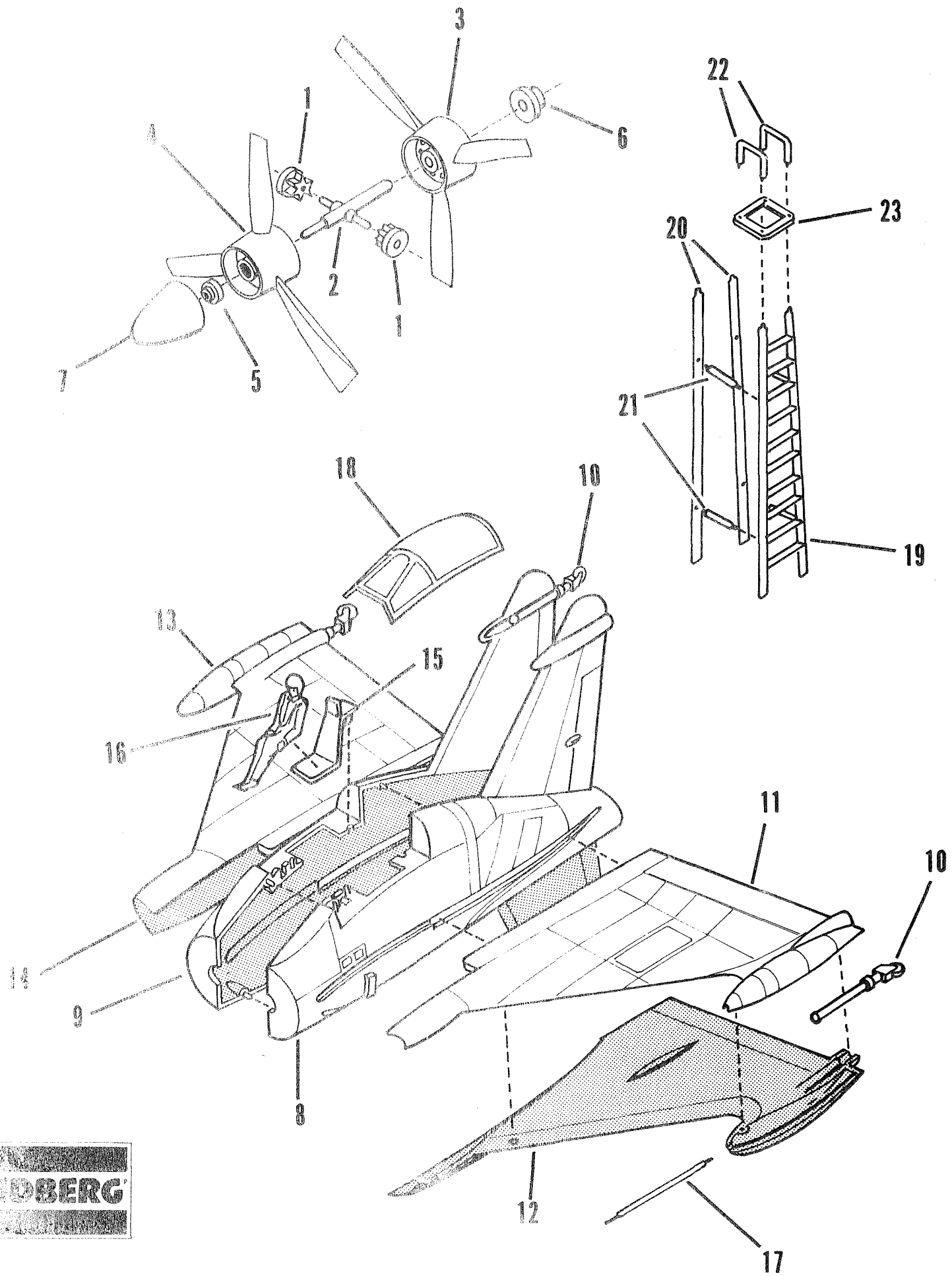
Prop hub and blades - Dull black.

Rudder tips - Dull black.

Anti-Glare panel - Dull black.

Prop tips - Yellow.

Ladder - Red.



- 1 Slide pinion gears 1 onto cross bar of propeller shaft 2. Gears must turn freely.
- 2 Place propeller shaft with gears into rear prop hub unit 3. Place a drop of oil on gears and place front hub unit 4 over shaft. Turn front prop slowly so gears mesh.
- 3 Slide retainer ring 5 and 6 onto shaft ends and apply a small drop of cement at each end. Check to be sure props turn freely. When cement has dried, cement nose spinner 7 in place.

- 4 Cement left 8 and right 9 body halves together. NOTE: Before cement sets, carefully insert landing gear 10 into tip openings. Gears should slide up and down.
- 5 Cement wing halves 11 to 12 and 13 to 14. Insert landing gear 10 into tips as in step 5. Now cement wings to body.
- 6 Cement seat 15, pilot 16 and pilot tube 17 to body. Cement canopy 18 in place. Now carefully cement propeller assembly to body. Apply decals.
- 7 Cement ladder parts 19, 20, 21, 22, 23 together as shown.